

WEATHER

	Min.	Max.	Precip.
Wednesday, April 23	38	55	Trace
Thursday, April 24	38	55	0.11
Friday, April 25	45	59	0.10
Saturday, April 26	35	48	0.00
Sunday, April 27	32	49	0.01
Monday, April 28	35	51	0.00
Tuesday, April 29	40	45	0.33

ONE HUNDRED-FIFTH YEAR—No. 46

12 Pages This Week

Plus 4-Page Supplement

CHELSEA, MICHIGAN, THURSDAY, MAY 1, 1975

15c per copy

SUBSCRIPTION: \$6.00 PER YEAR

The Chelsea Standard

QUOTE

"A blow with a word strikes deeper than a blow with a sword."
—Robert Burton.

Track Team Depth Shows in Downing Novi

After three hard run meets, the Chelsea varsity track team finally had an easier time of it last Thursday, April 24, when they defeated Novi, 90-33.

"Novi, who has always had difficulty in competition with other Southeastern Conference track teams, managed four first places, but were the victims of seven first and second finishes by Chelsea in other events," Coach Kruse reported.

The meet, run under the usual early season conditions cold and damp, was used by the team to do some experimenting, and "to give some of our younger runners a chance to score and gain some experience," Kruse said.

He added that the Bulldogs are coming to a point in their track schedule where they will have to make some decisions as to where to run key people. "A meet like this, gives us a chance to move personnel around to see what they can do."

One of the highlights of the meet was the setting of a new school high jump record of 6'3" by Rick Sweeney. Sweeney broke his former record of 6'2". He also won the high hurdle event and finished second in the low hurdles.

Rick Haller ran his first mile run and finished with a good early season time of 4:52.8, to place first.

Howard Salyer, as Sweeney, was also a double winner, taking the 100-yard dash and the 180-yard low hurdles.

Winners and Chelsea placers for the meet are as follows:

Shot put: 1st, Ishmael Picklesimer, 46'2"; 2nd, Mark Smyth, 41'2"; 3rd, Rex Miles, 40'10".

High Jump: 1st, Rick Sweeney, 6'3"; 2nd, Randy Sweeney, 5'10".

Long Jump: 1st, Riddant (Novi), 18'11"; 2nd, Kevin Kelly, 17'5"; 3rd, Dennis Bauer, 17'4".

Pole Vault: Tie for first, Mark Burnett and Randy Sweeney, 11'.

880 Relay: 1st, Chelsea (Bauer, Stafford, Winans and Kelly), 1:40.2.

880-Yard Run: 1st, McComas (Novi); 2nd, Morris Johnson, 2:13; 3rd, Todd Weber, 2:13.

120-Yard High Hurdles: 1st, Rick Sweeney, 1:41; 3rd, Jason Lindauer, 2:10.

Mile Run: 1st, Rick Haller, 4:52.8; 2nd, Bill Rademacher, 5:07.6.

100-Yard Dash: 1st, Howard Salyer, 10.7; 2nd, Kevin Kelly, 10.8.

440-Yard Dash: 1st, Morris (Novi), 57.8; 2nd, Burnett, 58.1.

180-Yard Low Hurdles: 1st, Howard Salyer, 21.9; 2nd, Rick Sweeney, 22.4; 3rd, Curt Winans, 23.0.

Two-Mile Run: 1st, John Storey, 10:45.9; 2nd, Phil Frame, 10:58.3.

220-Yard Dash: 1st, Dennis Bauer, 25.1.

(Continued on page two)

Clinton Collyer Installed By Knights Templar

Among officers installed Saturday evening, April 26 for Ann Arbor Commandery No. 13 Knights Templar at the Ypsilanti Masonic Temple was Chelsea resident Clinton Collyer. Collyer was installed as Eminent Commander at the 8 p.m. ceremonies.

The installation began promptly, with Ernest K. Vehrenkamp, P.C., leading the Escort, first the installing officers ladies into the assembly, and then the officers and their ladies.

"Duane, Luick, a senior at Chelsea High school, called the assembly to order.

"Following a welcome by Thomas Jameson, eminent commander, the installing staff was escorted into the assembly.

"Collyer was the first officer to be installed.

"After proclamation, a special solo was sung for the officers, their wives, and family.

"Letters of congratulation were read from the sons, wife, and family of Collyer, as they were unable to attend his installation.

The son, Douglas, is stationed with the U.S. Army in Germany; the other, George, is in Denver, Colo.

Following the conclusion of the ceremonies, officers, their families, and guests retired to the dining room for refreshments and a social gathering.

"Duane, Luick, a senior at Chelsea High school, called the assembly to order.

"Following a welcome by Thomas Jameson, eminent commander, the installing staff was escorted into the assembly.

"Collyer was the first officer to be installed.

"After proclamation, a special solo was sung for the officers, their wives, and family.

"Letters of congratulation were read from the sons, wife, and family of Collyer, as they were unable to attend his installation.

The son, Douglas, is stationed with the U.S. Army in Germany; the other, George, is in Denver, Colo.

Following the conclusion of the ceremonies, officers, their families, and guests retired to the dining room for refreshments and a social gathering.

"Duane, Luick, a senior at Chelsea High school, called the assembly to order.

"Following a welcome by Thomas Jameson, eminent commander, the installing staff was escorted into the assembly.

"Collyer was the first officer to be installed.

"After proclamation, a special solo was sung for the officers, their wives, and family.

"Letters of congratulation were read from the sons, wife, and family of Collyer, as they were unable to attend his installation.

The son, Douglas, is stationed with the U.S. Army in Germany; the other, George, is in Denver, Colo.

Following the conclusion of the ceremonies, officers, their families, and guests retired to the dining room for refreshments and a social gathering.

"Duane, Luick, a senior at Chelsea High school, called the assembly to order.

"Following a welcome by Thomas Jameson, eminent commander, the installing staff was escorted into the assembly.

"Collyer was the first officer to be installed.

"After proclamation, a special solo was sung for the officers, their wives, and family.

"Letters of congratulation were read from the sons, wife, and family of Collyer, as they were unable to attend his installation.

The son, Douglas, is stationed with the U.S. Army in Germany; the other, George, is in Denver, Colo.

Following the conclusion of the ceremonies, officers, their families, and guests retired to the dining room for refreshments and a social gathering.

Kindergarten Pupils Should Enroll Early

Reporting that last week's Kindergarten Round-Up was very successful, the principal of North school, Robert Benedict, urges those parents who did not have the opportunity to register their children for the 1975-76 school year to do so as soon as possible.

Benedict said that it is essential for the schools have a good idea of how many children will attend kindergarten classes in the fall, so that the teachers may begin to plan for class size.

Parents of children who will be five years of age, on or before Dec. 1, 1975, and who reside in the Chelsea School District, may register their children by calling either North or South schools. The phone number for North is 475-2577; South, 475-2913.

Because of the construction going on at both schools, and the problem with access to entrances, Benedict said that this year it will be impossible to schedule spring visitation for kindergarten classes. "We never know what will happen from week to week, and we just cannot advise parents and children of a visitation date."

Petitions Now Available for School Election

The annual election of the Chelsea School District will be Monday, June 9. The election will be held in the large group instruction room of Dwight W. Beach Middle school on Mayer Dr.

The term of Martin Tobin expires in June. Tobin has filed his petition seeking re-election.

John T. Gaughan has also filed a petition for the four-year seat on the Board.

Petitions are available at the superintendent's office at the high school for those who wish to seek the position. Signed petitions must be returned to the superintendent's office no later than 4 p.m. Monday, May 12.

School electors must be registered with their respective township clerks in order to vote in the annual election. Registration with the township clerk automatically registers a resident in the school district. Those persons not registered may do so through 5 p.m. May 12. Voters need not be property owners in order to vote in this election.

Adult Softball Leagues Form For Summer

Organizational meetings for the Recreation Council's adult softball program were held last week at the home of the league director, Charles Waller.

Approximately 25 representatives were present for the Thursday night meeting. The group represented 16 teams. Following a long discussion, it was decided that the teams should divide into two leagues; each meeting a different need of the community.

The American League is to be made up of eight teams, those considered to be the tops. The National League will be composed of the remaining eight teams.

The council feels that this should create two leagues that will be very competitive.

(Continued on page two)



FORENSICS TEAM MEMBERS were at the Monday night meeting of the Chelsea Kiwanis Club. Two of the boys gave serious talks. Dale Heydlauff spoke on "Requiem for a Heavyweight," and Brad Glazier gave his award winning speech on the scientific process of reproduction known as Cloning. In a talk entitled "Mary Shelley's Fantasy," Joel Sprague, Jim Marshall, Dave Schaible, Tom Hafer, John Storey, and Al Clark gave a humorous portrayal of the infamous Watergate affair, entitled "I Am Not A Crook." Pictured with their coach, William Coelius, far right, are, from left to right, in the front, Al Clark, Joel Sprague, Jim Marshall, and Brad Glazier. Standing in the rear, Dave Schaible, Tom Hafer, John Storey and Dale Heydlauff.



KIWANIS CLUB GUESTS at the regular Monday night dinner meeting were members of the 1975 varsity wrestling team, their coach and assistant coach. Pictured, left to right, are Kermit Sharp, coach Richard Bareis, Dennis Bauer, Tim Reed, Darryl West, assistant coach Sam Vogel, Doug Reed, Nick Keiser, Mark Pennington, and Jim Stahl.

High School Staff Begins Self Evaluation Study

Last Thursday afternoon the Chelsea high school staff began working on a self evaluation which will take about one year to complete.

This is the North Central Association's high school evaluation which must be done every seven years by high schools in the association.

For Thursday's work session the entire faculty was divided into two committees; one to gather data about the school and community, the other to review the school's philosophy and objectives.

The School and Community Committee prepared two questionnaires which were mailed to one half of the parents with students in the high school. This committee urges each parent who receives these questionnaires to take the time to complete them and return them to the chairman, Jon Schaffner, in order that up-to-date data may be tabulated concerning community feelings about what is important for the high school to stress as well as parent's views of how well the school is preparing their children.

This data, plus student questionnaires, faculty and administrator surveys, and census data, will help the committee complete its report on the school and community.

The information will be used by the Philosophy and Objectives Committee now and later individual department committees as they go through their separate self examinations next fall and winter.

Sometime next spring the school will be visited by a team of educators from North Central Association. This team will critically look at the self-appraisal and report to the association and back to Chelsea School District on how well they think the school and faculty are the goals and objectives set for themselves and how faculty are the goals and ob-

jectives are for this school in this community.

The Philosophy and Objectives Committee chaired by Judith Scott, spent the afternoon reviewing the previous philosophy and objectives and preparing to make a preliminary revised report.

After they have received the data from the School and Community Committee, they will write their final report.

This North Central evaluation is really a self-evaluation in which the school looks at its community, student body, faculty, class offering physical plant; in short every thing trying to see its strengths and weaknesses.

Hopefully they will spend the next seven years improving their strong points and working to eliminate their weaknesses.

Baseball Team Splits 2 With Stockbridge

In a double-header played against Stockbridge last Saturday afternoon on the home diamond, the Chelsea Bulldogs lost the first game to Stockbridge, 9-5, but came back strong in the second game to defeat their opponents, 7-3.

The Chelsea record now stands at 4-5.

Kurt Owings pitched six innings in the first game against Stockbridge. In the seventh, he was relieved by Randy Guenther. Don Nadeau caught for the entire game.

Stockbridge took the lead in the fifth inning of play, marking up three runs to top Chelsea, 7-5. Two more runs by the Stockbridge

JV Baseball Team Now 1-3 For Season

Chelsea High school's junior varsity baseball team opened its home season last week with a 12-10 come-from-behind victory over Willow Run.

In the home opener against Willow Run, the Bulldogs were led by Ernie Hadley's three-hit attack. His two triples and one double drove in five runs. After watching a 6-1 lead disappear to Willow Run who took the lead, 10-9 the Bulldogs fought back to

(Continued on page three)

Brad Glazier 4th in State Forensics

Chelsea High school forensics team sent three people to the state competition last Saturday in Ann Arbor. One of the three returned home with a fourth place.

Brad Glazier, placed fourth in the Men's Extemporaneous event following competition in two preliminary rounds and one final round. Compiling 21 points to place fourth, Brad marked up a school record for forensics at Chelsea High.

According to Coach William Coelius, the best performance in state competition was given in 1971 when Daniel Gaunt took fifth place in the Men's Extemporaneous event.

Brad spoke on "The Scientific Method of Reproduction Known as Cloning."

This was Brad's third and final year with the Chelsea High school forensics team. He has held a fine record as a debater and speaker while a member of the team. "Brad will be hard to replace," reported Coach Coelius.

Last year Brad qualified for state competition, but was knocked out in the preliminary rounds.

"The state tournament," said Coelius, "capped off a record year for us. In district competition we took 17 of 20 events, and in the regionals, the toughest in the state," he reiterated "we placed three speakers. It is the farthest a forensics team has gone in its history at Chelsea High school. It will be a tough act for future forensics teams to follow.

Coelius reported that Brad plans to continue in forensics competition at Eastern Michigan University where he will be a freshman in the fall.

Eastern has awarded him with a four-year scholarship for tuition. According to Coelius the EMU Forensics team is "one of the strongest in the nation."

Brad plans to pursue a career in communications... obviously he is good at it!

Golfers Open Season With Win at Tecumseh

The 1975 Chelsea varsity golf team opened their season in non-league play against Tecumseh at the Tecumseh Country Club Monday evening.

The Bulldogs were able to defeat their opponents, carrying a two-point lead. Chelsea turned in a score of 170 for the nine holes, while Tecumseh players hit a 172.

Coach Pat Wade reported he

was very pleased with this "warm-up" play.

Mike Fouty confirmed Wade's prediction, that his play in practice rounds displayed good control of the ball. He turned in a good game of golf scoring a 39, three over par for the nine holes on the Tecumseh course. Fouty was medalist for the meet.

Three other Chelsea players turned in good rounds of golf, assisting in the effort to take the meet. Dan Barnes hit a 42, Vic Steinbach followed him with a 43, and Roger Policht shot a 46.

Six players on each team shot four rounds of golf, the top four scores were taken to determine the winning team.

The Bulldogs faced their first league challenge Tuesday evening with a meet against Saline on the opponent's course.

Tennis Team Gets Season's First Victory

Chelsea's varsity tennis team captured its first victory of the season Tuesday, defeating Stockbridge, 5-2. The match score was:

1st Singles: Bill Zick (S) defeated Curt Umstead (C) 7-5, 5-7, 6-3.

2nd Singles: Debbie Bertke (C) defeated Dan Dancer (S) 6-4, 6-3.

3rd Singles: Steve Zick (S) defeated Paul Marshall (C) 6-4, 6-3.

4th Singles: Andy Quackenbush (C) defeated Dan Ward (S) 6-1, 6-0.

1st Doubles: Dan Hagen and Duane Luick (C) defeated Matt McKune and Ken Bailey (C) 7-5, 3-6, 8-6.

2nd Doubles: Doug Beaumont and Dave Fletcher (C) defeated Dave Camp and Lee Holbrook (S) 6-2, 6-3.

3rd Doubles: Keith Cockerline and John Wagner (C) defeated Mark Gladstone and Steve Barry (S) 4-6, 6-4, 6-3.

Chelsea's varsity tennis team now stands at one and three for the season.

The next match will be today (Thursday) on the home courts, when the team will meet Williamston.

Girls Track Team Sets Two School Marks

Despite the fact that the Chelsea girls track team lost to Brighton, 50-55, last Friday, April 25, the girls broke two school records and took seven out of 13 firsts in the meet.

Coach DiAnn L'Roy attributes the loss to the number of second places Brighton was able to come up with (seven) to Chelsea's three. That "seems to have been the deciding factor," she said.

Marking up a new school record for Chelsea in the long jump was Kathy Treado, whose leap of 14' earned her a first place as well.

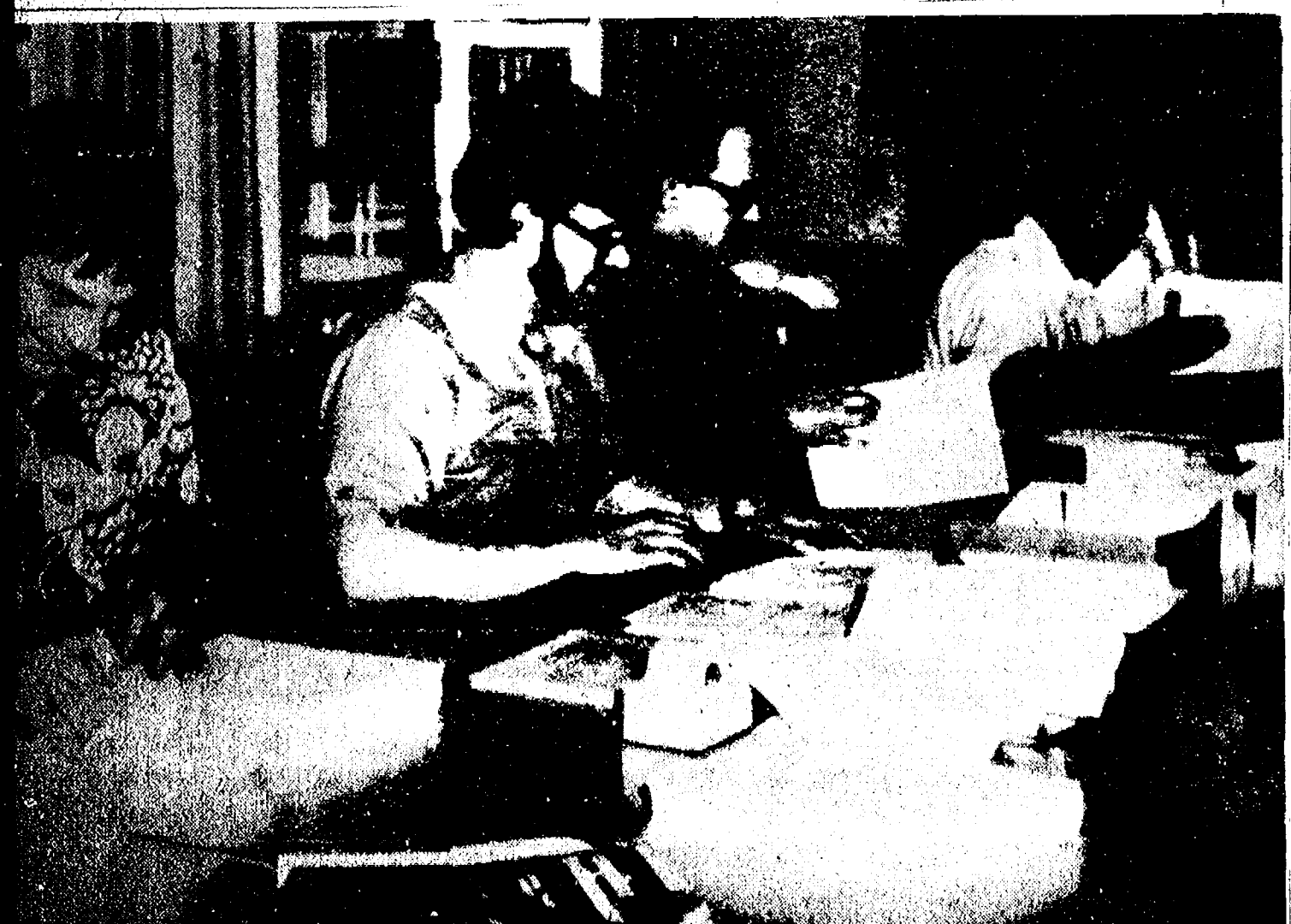
Another school record was broken by sprinter Susan Frisbie, whose first place of :12.0 in the 100-yard dash set a new record for the girls track team.

(Continued on page six)



CONGRATULATIONS to three Dana employees who have each served the company for 25 years. Pictured with their plant manager, Jack Reed (front left), who presented each of them with a Bulova Accutron watch, and their supervisors, Don Houle and Dale Jehnzen, are Don Reynolds (left

front), a tool crib attendant with Dana since April 27, 1950; Edward Risner, an equipment assembler who has been with Dana since April 27, 1950; and Harold Salyer, a tool cutter-grinder, who has been with the company since April 26, 1950.



HIGH SCHOOL TEACHERS are preparing Mr. Vogel and Mrs. Bareis. All parents who receive questionnaires for mailing to parents. From left are Mr. Balton, Mr. Demlow, Mr. Kelly, Mr. Vogel, and Mrs. Bareis. All parents who receive

questionnaires are urged to complete them and return them to the high school as soon as possible.

The Chelsea Standard, Thursday, May 1, 1975

Established 1871 **The Chelsea Standard** Telephone 475-1371

Excellence Award By Michigan Press Association
1951-1952-1960-1964-1965-1966

Walter P. Leonard, Editor and Publisher

Published every Thursday morning at 300 North Main Street, Chelsea, Mich. 48118, and second class postage paid at Chelsea, Mich., under the Act of March 3, 1879.

Subscription Rates (Payable in Advance)

In Michigan:	Outside Michigan:
One Year\$6.00	One Year\$8.50
Six Months\$3.50	Six Months\$4.50
Single Copies\$.20	Single Copies\$.25

MEMBER **NATIONAL NEWSPAPER** Association - Founded 1888

National Advertising Representative:
MICHIGAN NEWSPAPERS, INC.
257 Michigan Ave.
East Lansing, Mich. 48823

Uncle Lew from Lima Says:

DEAR MISTER EDITOR:

Ed Doolittle told the fellers, at the country store Saturday night that it's a bald face shame the misery some folks have to go through in this land that is flowing with milk and honey. The way some reports in the papers put it, Ed allowed, the only Americans half way well off is them that's getting food stamps, cause as late as last week Ed said he hadn't read of a cutback in stamps.

This one piece Ed said he saw was about some of the folks that is having to take pay cuts. Per instant, Ed reported, there is old

Henry Ford's boy. He was paid \$965,000 by his pa's company in 1973, but last year he had to skimp along on just \$290,000. They ain't no way Henry Jr. can live in the manner to which he is accustomed. Ed said, and with car sales what they are so far in 1975, it's a wonder the pore feller could scrape up gas money to get from Michigan to California where he got caught driving drunk a few weeks back.

General speaking, Ed went on, starvation wages seem to be the coming thing for all big wheels excepting politicians. Cutbacks has even worked down to \$60,000 a year airline pilots that has agreed to take a 10 per cent drop. Henry Jr. and some of them railroad presidents that is pulling down a measly \$400,000 a year had better set their cutbacks up on percentage. If they cut Henry Jr. as much this year as they did last, he'll wind up in the hold more than somewhat.

Zeke Grubb broke in to say he could see this kind of thing coming last fall. That was when Joe Namath set still for a 10 per cent slice off his \$300,000 a year wage fer playing football. Zeke said these company heads is jest going to have to put themselves up fer auction like Namath and that base ball pitcher Catfish Hunter done. Namath now is talking about agreeing to a \$4 million deal to play in another league. Hunter got his \$3 million and he ain't worried a bit that he went from millionaire to bum by losing his last two games. He can buy and sell a ball park full of fans and never touch his principal, Zeke said.

And speaking of wage cutbacks, Bug Hookum told the fellers he liked the idea Senator Jesse Helms of North Carolina come up with, but nobody else in the Senate did. Helms hit them fellers where they live, Bug said, when he perposed that the wages of senators be tied to the national debt. Ever time the debt is raised, Helms said, the salaries of them that agree to raise it ought to go down. The trouble with that deal, declared Bug, is that Helms didn't take in account that no politician is ever willing to put his own money where his mouth is. The Congress giveth, away, unless it's somebody else but the congressmen never taketh being took, was Bug's words, and the only way them fellers will take a pay cut is to git voted out of work.

Yours truly,
Uncle Lew.

Colorado has opened a \$110 million highway tunnel through the Continental Divide. The 1.7-mile-long tunnel, named for former President Dwight D. Eisenhower, is more than 11,000 feet above sea level.

LAFF OF THE WEEK



JUST REMINISCING

Items Taken from the files of The Chelsea Standard

4 Years Ago...

Thursday, April 23, 1971—

Steve Bennett, son of Mr. and Mrs. James Bennett of Beeman Rd., took top honors in the Junior Division of the Ann Arbor Regional Science Fair, which was held this past week-end in Ann Arbor. Steve was the only entry from Chelsea this year.

Grass fires in the past few weeks have kept Chelsea firemen hopping. Chief Jim Gaken says that the total calls for this year have been 52.

John Pierson will be an associate with Robert Thornton, realtor in his office, it was announced this week.

Members of Our Savior Lutheran church will break ground for their new building Sunday, May 2, at 2 p.m. The new building is to be located at 1515 S. Main St. The Rev. William H. Keller will officiate at the ceremonies.

Mrs. Art Steinaway was granted "Girl of the Month" award at the April 20 meeting of the Chelsea Jaycee Auxiliary.

14 Years Ago...

Thursday, May 4, 1961—

Mrs. Marjorie F. Daniels of 656 Washington St., wife of Chelsea's village president, Robert Daniels, will represent this area in the Mrs. Michigan contest in Detroit, May 24-25, with the hopes of all area homemakers that she will be the representative chosen to represent Michigan in the Mrs. America contest in Ft. Lauderdale, Fla., in November.

Alfred D. Mayer, prominent in Chelsea business, civic, church, and community affairs for the past 22 years, died of a heart attack at 2:15 p.m. Saturday while mowing the lawn at his home, 737 S. Main St.

Dr. J. V. Fisher and Earl Beeman, whose terms as school board members in the Chelsea District expire June 30, have stated that they will not seek re-election at the June 12 election.

Lloyd Grau of Chelsea, who is a junior at Michigan State University, East Lansing, was one of a 10-man team from MSU to attend the Iowa State University livestock judging contest at Ames, Ia., last Saturday.

24 Years Ago...

Thursday, May 3, 1951—

Mrs. John L. Fletcher and Mrs. R. A. McLaughlin are making arrangements for a blood donor program to be carried out here next Tuesday, May 8, providing a sufficient number of volunteers will have notified them of their intentions to donate blood.

Twenty members were present for the May meeting of Cavanaugh Lake Grange held Tuesday evening at the home of Mr. and Mrs. Walter Bohne.

Motorists driving unsafe auto-

mobiles in Chelsea this month face arrest and fines, Chief George W. Doe said yesterday. Chief Doe announced stepped up enforcement of the city's vehicle maintenance laws in support of the May traffic safety program.

Chelsea took over undisputed first place in the Huron League race last Tuesday at Flat Rock as they dumped the Rams, 4-1, on the perfect clutch pitching of Marty Tobin, and ran their victory string to seven straight.

34 Years Ago...

Thursday, May 1, 1941—

The Methodist Home of Chelsea has been the recipient of a generous gift from the Kresge Foundation of Detroit. The Home has been given \$100,000 toward the construction of a new wing, as well as the rehabilitation of the present buildings.

Eight hundred University of Michigan students received public recognition at the 18th annual Honors Convocation April 25. Chelsea residents among the honorees are James K. Daniels, who received recognition for outstanding scholarship; and Charles E. Erickson who received recognition for outstanding scholarship, and the Phi Lambda Upsilon award in chemistry and chemical engineering.

On Saturday evening, the Chelsea Community Association, which is a Kiwanis endorsed organization staged a successful dance at the Chelsea high school gym. John J. Lamb was co-chairman of the affair, and was ably assisted by Norman Perkins, Lowell Davison, and Dudley Holmes of the Kiwanis Club.

Thinclads Romp

(Continued from page one)

Mile Relay: 1st, Novi, 3:51.1. 440 Relay: 1st, Chelsea (Salyer, Collins, Winans and Kelly), 47.2. The next meet will be at home today, (Thursday) against Brighton.

Coach Kruse reports that Brighton has some good individuals and that the meet should prove to be a close one.

Following the Brighton meet, the Bulldogs will travel to Marysville for the Marysville Relays, where all the events, including the field events will be in relay form. Some 30 teams are expected to be present.

Thursday, May 8, Kruse and his team expect a showdown between last year's Conference champion, South Lyon, and the runner-up, Chelsea.

This meet will be held on the Chelsea track at 4 p.m.

STUDENT FINANCIAL AID

In 1973-74 student financial aid at U. of M. included \$11,326,060 in scholarships, fellowships, and other grants from general funds; \$12,867,351 from other University funds; and \$6,162,315 in student loans.

MICHIGAN MIRROR

By Elmer E. White, Secretary, Michigan Press Association

Drugs and Drinks

Michiganders slurped up more than 26 gallons of beer, wine and distilled spirits apiece during the 1973-74 fiscal year, according to statistics from the Liquor Control Commission.

Each person didn't drink that much, of course. The figures represent an average, based on the amount of alcoholic beverages sold in the state during that time, and the number of residents.

Who did the drinking?

A scientific survey conducted through the Office of Substance Abuse Services indicates that use

of alcohol in the past year was greatest in the 18-34 age range, and that the proportion of men consuming alcohol on a regular basis last year was twice that of women.

In addition, the study shows that:

—Use of alcohol increases with income and educational level.

—The proportion of whites using alcohol is greater than that of non-whites.

—More than 7.5 percent of Michigan people drink alcohol every day, and 25 percent of these have five or more drinks per day.

Marijuana, another of the 16 substances dealt with in the study, is "widely and frequently used in Michigan," it is reported.

About one in five persons have used marijuana sometimes in their lifetime, one in nine in the past year, and one in 20 regularly in the past year, the study report says.

The two-to-one proportion reported for alcohol use holds true for marijuana use also, with 6.1 percent of Michigan men (349,000) using it regularly and 3 percent (112,000) of the women using it regularly.

Those numbers may seem dull and dry to many, but they're expected to provide the basis for some weighty work in the future.

"Up to now, we've had only rough estimates on substance abuse prevalence," says J. Irvin Nichols, administrator of the OSAS program.

Figures provided by the study offer a base by which the state can measure any change in alcohol and drug use patterns, he says.

"We can also use the study to begin to focus on priority problems in terms of both the substances and the people involved," Nichols says. "The information from the study should lead to reallocation of some of our resources and help us plan and develop more effective programs."

Electricity a Problem

The No. 1 energy problem still facing Michigan these days is the availability of electric power.

That's the contention of Gov. William Milliken in his first annual energy report sent recently to members of the legislature.

"With respect to electricity, it is apparent that the short-term outlook is quite negative," Milliken says. "And solutions must be devised which deal with this immediate reality as well as with the longer-term implications."

The governor is asking a special advisory commission on electric power alternatives to examine trends in demand for electrical energy and assess the ability of existing utilities to provide enough electric generating capacity.

Toy Licenses Required

Mechanical toys may be dangerous to young folks. The same goes for those with electrical or thermal characteristics.

So the State of Michigan now is requiring manufacturers, distrib-

utors and retailers of such toys to be licensed.

"A thermal, electrical or mechanical toy found to be hazardous by the federal Consumer Product Safety Commission comes under the definition of a 'banned hazardous substance,'" says Ron Leach of the Michigan Agriculture Department's food inspection division. "We will keep retailers and distributors advised of toys that have been banned."

Leach's division, which is handling license applications, is charged with enforcing the new law.

Tite Competes in MSU Horse Show

William Tite, II, of Chelsea competed in the recent Block and Bridle Horse Show held at Michigan State University.

Tite, the son of Mr. and Mrs. William H. Tite, Jr., of 17980 Waterloo Rd., is an MSU sophomore majoring in pre-professional veterinary medicine and a 1973 graduate of Chelsea High school.

The 27th annual event featured competition among 95 students from across the country. Riders participated in various events to test their horsemanship and also entertainment features such as roping goats.

ROCKCRETE PRODUCTS

TRANSIT - MIXED CONCRETE

WASHED SAND & STONE - ROAD GRAVEL

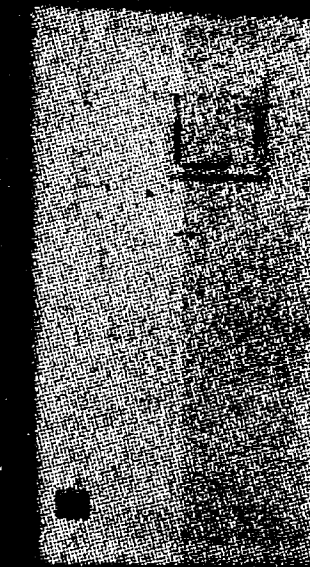
LIMESTONE

Rite-Way Mixers

475-2848

6991 CHELSEA-MANCHESTER RD., MANCHESTER

GX-100 SMOKE DETECTOR



Self-Contained Early Warning Fire Detector

- Dependable, accurate, easy to install
- No wiring, no batteries, no maintenance
- Sound alarm, built-in test, and reset buttons
- Simple, fool-proof design
- No need for expensive alarm system
- No need for expensive alarm system
- No need for expensive alarm system
- No need for expensive alarm system
- No need for expensive alarm system
- No need for expensive alarm system

CHELSEA HEATING & AIR COND. CO.

Phone 475-2419



TREES and SHRUBS NOW AVAILABLE

at

Larry's Roadside Market

Halfway Between Chelsea and Manchester on M-52

1 mile south of Green Lake Rd. Phone 475-1610

KEN YOUNG CONSTRUCTION

PHONE 426-3342 or 878-6342 (after 6 p.m.)

Home Builder - Remodeling - Carpenter
Contractor - Brick Work - Fireplaces
Aluminum Siding - Block & Brick Work
Painting - Decorating - Trucking & Excavating

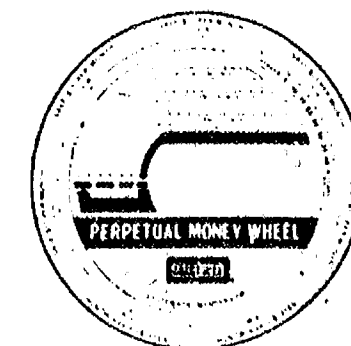
FOR SALE—3 scenic 10-acre parcels. Two with lake frontage on private lake.

FREE ESTIMATES WITH GUARANTEE ON ALL OUR WORK.

PHONE KEN YOUNG after 6 p.m.
668-7420 or 878-6342



...but here's the book you'll want to read to them at 18!



No dad can afford haphazard planning for that one biggest expense of all—the education that can make the difference that lasts a lifetime. Our Perpetual Money Wheel shows how small monthly deposits to an AAFS 5 1/4% per annum Passbook Savings Account become a college education. For example: \$50 a month for fifteen years becomes \$13,680.* Our Perpetual Money Plan can make it all happen. A few minutes with our Perpetual Money Wheel will show you how. It's free—and there's one waiting for you in our lobby. Stop in for your Perpetual Money Wheel today!

*Based on current annual rate of 5 1/4%

AAFS ANN ARBOR FEDERAL SAVINGS
9 OFFICES TO SERVE YOU IN ANN ARBOR, CHELSEA, DEXTER, MANCHESTER, YPSILANTI AND BRIGHTON

Founded 1890
Member FSLIC

Be Kind to Animals Week Will Be Observed

"Kindness is Contagious," is the motto that Lee Kvarnberg, manager of the Huron Valley Humane Society and his staff live by throughout the year. "We practice kindness to animals every day throughout the year," Kvarnberg said, "and we try to infect others with our feeling every day."

One of the oldest national weeks in history will be recognized Sunday, May 4 through Saturday, May 10: "Be Kind to Animals Week."

And being kind to animals in more ways than just caring for stray dogs and cats is what the Huron Valley Humane Society is all about.

For those of us who hold an overwhelming negative reaction to the two words, "humane society," facts such as 13,000 animals of a total of 18,000 cared for by the Huron Valley Humane Society last year were euthanized tends to reinforce that negative feeling.

But to talk with Lee Kvarnberg, one is forced to take a closer look at some other realistic, hard-hitting facts, that shed light on the real problem: human treatment and care of animals, not the humane society.

Among these: there are more than 83 million dogs and cats born each year, homes are found for approximately 30 million of them. In other words, overpopulation of animals has run rampant; there are more animals than people.

Many people take pets without any real feeling of responsibility, once they become a nuisance, they get rid of them, and where? The humane society, of course.

It would be impossible for the facility, located at 3100 Cherry Hill Rd., Ann Arbor, to care for and provide good homes for all the animals whose care is entrusted with Kvarnberg, his staff, and volunteers. Therefore, some must be put to sleep. Animals are kept for five days, and then as long as there is cage space to house them.

The Humane Society and its 12-member Board of Directors are working hard to provide effective care for animals, to be kind to them.

They are involved in supporting legislation to protect endangered species; in the development of an anti-cruelty code protecting animals and their owners in Washtenaw county; in lobbying against dog racing and dog-fighting in the state; lobbying against leg-hold traps, a method of trapping that cannot help but inflict torture on innocent animals, and campaigning for low-cost sterilization clinics for cats and dogs.

David L. Buxton Granted Paper Tech Scholarship at WMU

Kalamazoo-Scholarships with a total dollar value of \$29,594 have been awarded to 69 Western Michigan University paper science and engineering department students for the terminating winter semester.

One such scholarship was awarded to Chelseaite David L. Buxton, son of Mr. and Mrs. Charles E. Buxton of 3840 S. Fletcher Rd., Chelsea.

Stipends range in value up to \$1,026 but more than half are in the \$300-\$400 level with 11 valued at more than \$500.

The scholarships, administered by the Paper Technology Foundation, Inc., at WMU, are renewable for a total of eight semesters if a student maintains satisfactory classroom performance.

The Paper Technology Foundation has a membership of about 80 corporations and more than 200 alumni and individuals who contribute funds to it, most of which is directed into scholarships for paper science and engineering students at WMU.

Sixty-nine students are currently on scholarship. About 15 more than is usual for a winter semester at WMU.

Vega Wagon Driven Away From Dealer Lot

A 1974 Vega station wagon was reported missing Wednesday April 23 at 8 a.m. from Lloyd Bridges Chevrolet. One and one-half hours later, village police recovered the vehicle on Lindly Rd. The wagon had incurred damages estimated at \$350; and an AM-FM 8-track stereo, Motorola brand, valued at \$120 had been removed from the car.

Fred Klink of Bridges Chevrolet reported to village police, he believed the bronze two-door wagon, parked in the lot on the corner of North and Main Sts., had been taken sometime between 6:30 p.m., April 22, and 8 a.m. the following morning.

Police entered a LEIN check on the vehicle, only to cancel it one hour later upon recovery on Lindly Rd.

Apparently the wagon had been hot wired, and not started with a key, as Klink originally suspected.

The case remains open. Chief Meranuck reported that suspects are now under investigation.

Girls JV Softball Team Troupes Saline, 16-2

In their first league game of the season, played on the home diamond, last Friday, April 25, the girls JV softball team wiped out Saline, 16-2.

Sue Heydlauff was the winning pitcher, completing the five-inning game, and striking out five batters.

The girls had a triple play, two doubles, and a home run hit by Edie Houk. Each girl had at least one hit.

Coach Cindy Bradbury reported that "the girls played much better than I had expected for early season."

In their first game of the season, played April 22 against Manchester, the girls lost to the Flying Dutchmen, 14-6.

Kensington Metropark near Milford, the first "Metropark," covering 4,300 acres, opened on May 30, 1948. No formal opening was held, but the enlarged Kent Lake proved to be a major attraction for area residents.

JV Baseball Team Now 1-3

(Continued from page one)

score three runs in the bottom of the sixth inning. John Adams retired the Flyers in the top of the seventh to mark up a victory for Chelsea.

Jeff Powell started the game and pitched well until he ran into trouble in the fifth inning.

Following the home game with Willow Run the Bulldogs played Manchester, dropping a 10-7 decision to their opponents.

Trailing 8-0, the JVs scored seven runs in the last four innings to pull within three. Tim McAllister led the attack with a three-for-four performance while receiving support from Scott Owings who contributed a two-for-two effort. Don Morrison started and absorbed his second defeat against no victories. Doug Craft relieved him in the sixth inning and turned in two perfect innings of pitching.

The JV squad, composed of John Adams, Gerald Benjamin, Chuck Broderick, Mike Check, Doug Craft, Rick Davis, Ernie

Hadley, Dale Hedrick, Matt Heydlauff, Tim McAllister, Scott Owings, Jeff Powell, Tony Roberts, Mike Schanz and Bruce Stubbs played their first game of the season at Stockbridge. The Stockbridge Panthers held the Bulldogs to just one hit. They lost 5-2. After a shaky first inning in which he gave up three runs, starter Don Morrison turned in a strong performance, striking out seven and walking four.

WARM SOIL WITH PLASTIC

To get a head start on this year's garden, use black plastic to warm the garden soil before you seed or transplant, advise Michigan State University extension horticulturists.

Warming the soil makes seeds germinate faster and transplants get established earlier, the experts explain. That can mean plants that start producing days earlier.

Telephone Your Club News
To 475-1371.

STATE SENATOR GILBERT BURSLEY (R-Ann Arbor) was honored April 22 by the Michigan Future Farmers of America (FFA) in an award ceremony held in Lansing. The award was presented to Senator Bursley by the officers of the Michigan Association of FFA. Senator Bursley received the honorary degree for his continuing

support and interest in activities of the organization. Pictured, from left, are state president Ron Carlisle, Cassopolis; Greg Buning, Falmouth; Kim Heister, Olivet; Kendall Nash, Pittsford; Senator Bursley; Charlie Green, Elsie; and Anita Stuever, Capac.

New Driver Ed Program Starts This Summer

Driver education at Chelsea High school will be a completely new program this year because the state requires that classroom and driving instruction take place concurrently. Because of the high cost of teaching driver education during the regular school year, the board has approved the establishment of the three-phased range program that has become popular throughout the state.

The high school parking lot will become the range where each student will log five hours of behind the wheel experience. Five cars will be used on our range, with one instructor giving instructions through the regular AM radio.

Over the years Chelsea has been very fortunate to receive the cooperation of local auto dealers in furnishing the cars needed for our

program. Local dealers, Bridges Chevrolet, Harper Pontiac, Palmer Ford, Sprague Buick-Olds, Village Motor Sales, are making the program possible by furnishing 1975 model automobiles. The new program necessitates eight cars (which are available) to be used all day, every day. It is hoped a pick-up truck may be secured which would give a spare vehicle and also experience with a standard transmission.

Students will take this course in either of two 20-day sessions. The first session begins June 23 and runs through July 18. Classes will be held on Saturday, July 12 to substitute for July 4. The second session begins on July 21 and ends Aug. 15. Individual students will be scheduled from 7 to 10 or 10:30 to 1:30 each day. Each student

will receive an hour and a half of classroom instruction as well as behind-the-wheel experience each day.

Any person under 18 years (in or out of school) is eligible for this program. It is planned to schedule the older students in the first session unless they have other summer commitments (camp, vacation trips, etc.) that will conflict with the schedule. Basic rules will be passed out to each student on which the parents may make a written request for date changes. Band camp will cause many to request the early session.

On the last day of the course each student will be tested by the local secretary of state's office. Students who pass the course, and this test, are then asked to drive with a parent for 30 days before receiving their first license.

Barn Dance Tickets Are Still Available

Proceeds from the second annual Old Fashioned Barn Dance on Saturday, June 14 will go to the Special Olympics for Sullivan school and the Special Education program in the Dexter schools.

Tickets are going fast for the big hoe-down which takes place at the Charles Trinkle farm, 9631 Trinkle Rd., from 9 p.m. to 2 a.m. Luke Schaible will call the squares and food and refreshments will be available.

This is another chance for all guests to wear their Sesquicentennial costumes and enjoy an evening of fun for a good cause sponsored by the Lima Liberty Belles and the Lima Brush-Kateers.

Tickets may be purchased at McLeod's Pharmacy, Bouillion Sales and Doletsky's Family Barber Shop in Dexter. In Chelsea tickets are available at Chelsea Lumber, Vogel's, and Pump & Pantry.

Chairpersons for the event are Mrs. Don Alber and Mrs. Lee Ormsby.

ANNUAL SPRING RUBBISH PICK-UP MONDAY and TUESDAY MAY 5-6

Rakings and other items not covered by regular garbage and refuse pickup.

HAVE IT OUT EARLY MONDAY

Anything you can carry to the curb, we will pick up.

**CHELSEA
PUBLIC WORKS DEPT.**



use the
WANT ADS

The CHELSEA STANDARD

Serving Chelsea Since 1871

300 N. Main St., Chelsea

Phone 475-1371

Jiffy market

Big Enough To

Serve You . . . Small Enough To Know You!

Full Line Supermarket
BEER - WINE - LIQUOR
AUTHORIZED FOOD STAMP STORE
LOTTERY TICKETS
MARATHON GAS PUMPS
2-CYCO GAS PUMPS

**Corner Sibley
and Werkner Rds.
PHONE 475-1701**

OPEN

7 DAYS A WEEK

Sale Prices Effective
Thursday, May 1 thru Sunday, May 4

7 a.m. - 10 p.m.

JIFFY MARKET'S FRESH MEATS FEATURING USDA CHOICE BEEF

U.S.D.A. GRADE CHOICE

**ROUND
STEAK**



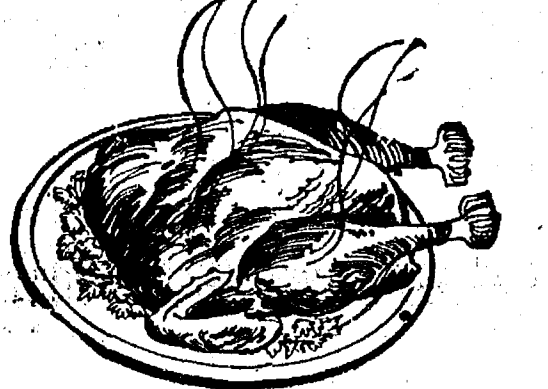
WHOLE . . . lb. **\$1.29**
TOP . . . lb. **\$1.39**
CUBE STEAK . . . lb. **\$1.39**
RUMP ROAST . . . lb. **\$1.39**

U. S. GOVT. INSPECTED GRADE A

FRYERS

Whole

45¢
lb.



SATISFACTION
GUARANTEED
HAMBURG
79¢ lb.

MEADOWDALE
HICKORY SMOKED
**SLICED
BACON**
\$1.19 lb.

U. S. CHOICE
**RIB
STEAK**
\$1.39 lb.

U. S. CHOICE
**GROUND
CHUCK**
\$1.29 lb.

BEEF
By the Side
Cut - Wrapped - Frozen
Complete Processing
Your Beef or Ours

BREAST O' CHICKEN

TUNA, CHUNK . . . 6 1/2-Oz. Can **45¢**

WAY BAKING CO., JACKSON

KLEEN-MAID BREAD . . . 3 1/4-Lb. Loaves **\$1.00**

FARM MAID CARTON OR PLASTIC JUG

HOMOGENIZED MILK . . . Gal. **\$1.19**

FARM MAID

FRESH ORANGE JUICE . . . 1/2 gal. **58¢**

CALIFORNIA CRISP, FIRM

HEAD LETTUCE . . . Head **29¢**

IF IT'S BORDEN'S IT'S GOT TO BE GOOD

BORDEN GLACIER CLUB ICE CREAM 1/2 Gal. **75¢**

THE REAL THING!! EQUALS ONE GALLON

COCA-COLA . . . 8 Pac 1-Pt. Bottles **\$1.49**

JIFFY MARKET MARATHON GAS

REGULAR

GAS 49.9

MINIMUM SALE \$3.00

OPEN 7 DAYS A WEEK
7 a.m. to 10 p.m.

2 - CYCO GAS



BEACH MIDDLE SCHOOL HONOR ROLL

2nd Semester—1st Marking Period

6th GRADE—

Donna Alexander, Paul Anderson (all A), Rae Ann Applado, Elizabeth Ball, Margaret Bassett, Andrew Bonus, Joan Bort (all A), Mary Boylan, Linda Bristle, Lisa Broderick, Teresa Broderick, Anthony Bullock, Peter Burkhouse, Elizabeth Bush (all A), Scott Chapman, Radine Cheever, Michele Clark (all A), Lisa Colvia, Lori Davis, Sandra Davis, Teresa Degener, Janine Diedrich (all A), Mary Jo Elsie, Lori Evison (all A), John Fall, Kara Feeney (all A), Donna Finkbeiner, Donna Fitzsimmons, William Freeman, Roger Graves, Paula Haist, Kimberly Harvey, John Haydock, Nancy Heaton, Teresa Hellmann, Nancy Heller (all A), Kelly Hense, Kathryn Herrst (all A), Susan Herrst, Kathy Honbaum, Troy Hosler, Angela Inglis (all A), Chris Johnson, Brian Koepele, Lori Kornel, Chris Kvarnberg (all A), Lisa Lakatos, Chandler Lane, Mary Kate Lewis, Margaret MacCollum, Dawn McDowell, Sara Merkel (all A), Theresa Merkel (all A), Elaine Meyer (all A), Karen Moore, Maileya Morley, Kirk Myers, Alicia Noah (all A), Jeff Osenoski, Christina Pax, Mary Kay Poljan (all A), Anita Powell, Patrick Powers, Susan Prinzing, Thomas Reilly, Almee Reynolds, Jon Riemenschneider, Jennifer Ringe, Elizabeth Russell (all A), Susan Satterthwaite, Patricia Schafer, Keith Schmitz, Melanie Schneider (all A), Cynthia Snyder, Margaret Stirling, Ross Stofflet, Kirk Stubbs, Leslie Thomas, Diane Thompson (all A), Patricia Villeneuve (all A), Catherine Wade, Michael Wade, Marcia Warren, Shari Weber, Jane Willan, Pat Williams.

7th GRADE—

Jamie Atkinson (all A), Mark Barnes, Michel Benedict, Gayle Beyer, Karen Blanchard, Mary Beth Blanchard, Kent Bollinger, Kelli Borton, Mary Bort, Julie Botsford, Daniel Bourget, Douglas Bowen, Kimberly Boyce, Tracy Cattell, Brenda Classon, Leah Classon, Dawn Connell, Deborah Connell, Alice Erke, Bradley Flanagan, Cathryn French, Denise Geddes, Thomas Gilbreath, Marilyn Hafner, Michelle Hafner, Linda Hamilton, Sara Hasel-schwartz (all A), Laurie Hastings, Jeryl Herrick, Teresa Hoffman,

Debbie Honbaum, Thomas Houle, Patricia Hume, Michael Killele, Marie Klink, Brad Knickerbocker, Debra Koepele, Sharon Kropf, Steven Kvarnberg, John La-Barbara, Michael Lewis, Bob McAllister, Daniel McGill, Beth Merkel (all A), Joyce Milkey, David Morris, Jeanette Morrison, Eileen Musolf, Cheryl Nadeau, Teresa Neff, Janet Oberg, Ann O'Hagan, Lee Anne Owings (all A), Dan Pagliarini, Douglas Pichlik, Valisa Plecher, Barbara Proctor, Scott Prohaska, Ruth Ratzlaff, Kollette Rinehart, Shari Roberts, Sue Schaefer, Clifford Scholz, James Shepherd, Kenneth Shepherd, Pat Shoemaker, Kimberly Slater, Julia Smith, William Spaulding, Drew Sprague, Kelly Stebelton, Timothy Sweeney, John Thornbury, David Vandervoort, Sally Vaught, Gail Wackenhut, David Waldyke (all A), Andrew Weir, Sandra Welshans, Cynthia Wolter, Kimberly Wood.

8th GRADE—

Renee Alexander, Jeanine Arnett, Cheryl Bareis, Cynthia Bareis, Karen Beuerle, Scott Beyer, Daniel Blough, Lucy Bort, James Breza, Tammy Cherry, Frank Cianciolo, Clayton Cook, Debra DeSmayther, Tammy Downer, Karen Dresch, Jeffrey Elbler, Mark Fall, Judy Guenther, Mary Haas, Debra Harrison, Shelly Haat, Susan Heller, Laura Hense, Bryan Herrick, Allison Hovater, Lori Inbody, Susan Inglis, Sheryl Kiel, John Koepele (all A), Jackie Lamb, Caroline Lane, Michael Machesky, Joe Margarette, Donna Marshall, Patty McClanahan, Lori Miles, Patrick Murphy, Wendy Myers, Mary Noah, Mary Northrop, Brenda Nugent, Scott Price, Janis Proctor, Becky Roberts, Dawn Roderick, Sara Schwarz, Marleyn Seitz, Thomas Severn, Dale Sine, Karen Stein, Mary Lou Stoll, Sheila Tarasow, Dennis Thompson, Gary Thornton, Daniel Trinkle, Lori VanRiper, Cathy Villemure, Cathy Voita, Michael Waldyke (all A), Janet Walz (all A), Cynthia Welshans, Douglas Wetzell, John Whitaker, Susan Williams, Charles Young.



TROOP 169—

We took the gifts we made to the Methodist Home. We also sang some songs. We talked about visiting Greenfield Village on May 10. Margaret Leisinger, scribe.

TROOP 442—

On Monday Mrs. Conner came and began a series to teach us first aid. We learned about bleeding, shock and artificial respiration. Also Mrs. Kvarnberg has more cookies and if we sell all of these, we will have a profit of over \$200. Chris Johnson, scribe.

TROOP 689—

On April 19 we went swimming at the Ann Arbor Y. After swimming we all went to McDonald's for a hamburger. On Wednesday, April 23, we went to the Methodist Home to visit with our pen pals. We took picture plaques and a valentine cards that hadn't been delivered. Teresa Degener, scribe.

TROOP 145

Mrs. Heller Mrs. Koch, and Mrs. Finkbeiner took us bowling at Chelsea Lanes, Wednesday, April 23. We had lots of fun. Treats were brought by Wendy Wolfgang. We are all excited about future events of Troop 145. Kristal Salyer, scribe.

Complete Canoe Rentals Operated at Delhi, Hudson Mills Parks

Canoe rentals, including canoe, paddles and safety gear as outlined in the State of Michigan Safety Regulations, are now available at Delhi Metropark.

Two trips will be offered: (1) From Hudson Mills to Delhi-Huron, \$10; and (2) From Dexter-Huron to Delhi Park, \$7.50. Hours are Saturday, Sunday and holidays, 10 a.m. to 7 p.m., operating week-ends only in the spring; and Monday through Friday, noon to 7 p.m., later in the season.

Inquiries should be made by contacting Hudson Mills Metropark, (3 miles northwest of Ann Arbor) by calling 426-3211 (Dexter).

CARPENTERING REMODELING

ALUMINUM SIDING - KITCHENS
PATIOS - GARAGES

PHONE 475-7474

CHARLES ROMINE
Licensed Contractor
18027 Old US-12
Chelsea

+ Services in Our Churches +

ST. PAUL UNITED CHURCH OF CHRIST

The Rev. R. J. Ratzlaff, Pastor.

Thursday, May 1—
1:30 p.m.—Prayer group.
Friday, May 2—
May Fellowship Day.
Saturday, May 3—
9:00 a.m.—11:30 a.m.—Junior Confirmation, JYF.
Sunday, May 4—
8:00 and 10:30 a.m.—Church school.
10:30 a.m.—Worship service.
3:00 p.m.—AA-J Association annual meeting at Church of the Good Shepherd, Ann Arbor.
Monday, April 5—
8:00 p.m.—Board of Christian Education.
Wednesday, April 7—
1:00 p.m.—Mission Club in Fellowship hall.
3:30 p.m.—Junior Choir.
8:00 p.m.—Chancel Choir.

ZION LUTHERAN CHURCH

Corner of Fletcher, Waters Rds.

The Rev. John R. Morris, Pastor

Friday, May 2—
12:00 p.m.—Church Women United-May Fellowship Day at Zion. Noon pot-luck. Program, 1-2:30 p.m.
Saturday, May 3—
9:00 a.m.—Junior Choir.
9:30 a.m.—Eight grade youth instruction class.
Sunday, May 4—
9:00 a.m.—Sunday school.
10:15 a.m.—Worship with Holy Communion.
2:00 p.m.—Luther League room painting.
Monday, May 5—
8:00 p.m.—Senior choir.
Wednesday, May 7—
7:45 p.m.—Women of Zion general meeting.
4:00 p.m.—Ninth grade fellowship.

WATERLOO

FIRST UNITED METHODIST

Parks and Territorial Rds.

The Rev. Altha Barnes, Pastor

Every Sunday—
9:15 a.m.—Morning worship.
10:15 a.m.—Sunday school.

WATERLOO VILLAGE

UNITED METHODIST CHURCH

818 Washington St.

The Rev. Altha Barnes, Pastor

Every Sunday—
10:00 a.m.—Sunday school.
11:15 a.m.—Worship service.

CHURCH OF JESUS CHRIST

OF LATTER-DAY SAINTS

Meetings at

St. Barnabas Episcopal Church
20500 Old US-12

Every Sunday—
11:00 a.m.—Priesthood meeting.
12:30 p.m.—Sunday school.
5:30 p.m.—Sacrament meeting.

SALEM GROVE

UNITED METHODIST CHURCH

3320 Notten Rd.

The Rev. Richard C. Stoddard, Pastor

Every Sunday—
9:30 a.m.—Sunday school.
Every Sunday—
10:30 a.m.—Worship service.

ST. JACOB EVANGELICAL

LUTHERAN CHURCH

12501 Rietmiller Rd., Grass Lake

The Rev. Andrew Bloom, Pastor

Every Sunday—
9:00 a.m.—Worship service.
10:15 a.m.—Divine services.

METHODIST HOME CHAPEL

The Rev. R. L. Clemans, Pastor

Every Sunday—
8:45 a.m.—Worship service.

IMMANUEL BIBLE CHURCH

145 E. Summit St.

The Rev. LeRoy Johnson, Pastor

Every Sunday—
9:45 a.m.—Sunday school, nursery provided.
11:00 a.m.—Morning worship, nursery provided.

BETHEL EVANGELICAL AND

REFORMED CHURCH

(United Church of Christ)

Freedom Township
The Rev. Roman A. Reineck, Pastor

Every Sunday—
10:00 a.m.—Worship service.

SPECIAL RESEARCH

FACILITIES

The Computing Center on the U. of M. North Campus houses the IBM 370-168 processor system, which services as many as 100,000 batch jobs and terminal sessions a month.

0050 Carpet Cleaning

May is spring cleaning time! Your carpeting deserves special attention. We recommend Host, the new method of cleaning carpets without water. The carpet is dry and ready to walk on immediately. Use our Host Electric Up-Bush. It's easy. Clean 40 sq. yds. only \$9.95. Phone for information.

0050 Carpet Cleaning

May is spring cleaning time! Your carpeting deserves special attention. We recommend Host, the new method of cleaning carpets without water. The carpet is dry and ready to walk on immediately. Use our Host Electric Up-Bush. It's easy. Clean 40 sq. yds. only \$9.95. Phone for information.

MERKEL BROTHERS

CONGREGATIONAL CHURCH

(United Church of Christ)

The Rev. Carl Schwarm, Pastor

Sunday, May 4—
9:45 a.m.—Choir practice.
10:30 a.m.—Sunday school and worship.

7:00 p.m.—Senior High Pilgrim Fellowship at church.
Wednesday, May 7—
7:30 p.m.—Bible study.

ST. MARY CATHOLIC CHURCH

The Rev. Fr. David Philip Dupuis, Pastor

Mass Schedule:
Every Saturday—
4:00-5:00 p.m.—Confessions.
5:00 p.m.—Mass.
Immediately after 7 p.m. Mass—Confession.

Every Sunday—
Winter schedule:
8:00, 10:00, 12:00 noon—Mass.
Summer schedule:
7:00, 9:00, 11:00 a.m.—Mass.

ST. BARNABAS

EPISCOPAL CHURCH

20550 Old US-12

The Rev. Jerrold Beaumont
Rector, 475-2003
Church 475-8818

Every Sunday—
9:00 a.m.—Choir rehearsal.
10:00 a.m.—Holy Communion, first, third, and fifth Sundays.
10:00 a.m.—Morning Prayer, second and fourth Sundays.
Tuesday, April 8—
8:00 p.m.—Bishops Committee meeting.

NORTH LAKE

UNITED METHODIST CHURCH

The Rev. David Stiles, Pastor

Sunday, May 4—
10:00 a.m.—Worship service.
11:00 a.m.—Church school.

CHURCH OF CHRIST

13661 Old US-12, East

David A. Rushlow

Every Sunday—
10:00 a.m.—Church school.
11:00 a.m.—Worship service.
Nursery will be available.
6:00 p.m.—Worship service.
Every Wednesday—
7:30 p.m.—Bible study.

FIRST ASSEMBLY OF GOD

The Rev. Thode B. Thodesoph, Pastor

Every Sunday—
9:45 a.m.—Sunday school.
11:00 a.m.—Worship service.
7:00 p.m.—Midweek services.
Every Wednesday—
7:00 p.m.—Christ's Ambassadors.
Every Friday—
1:00 p.m.—Ladies Bible study.

ST. JOHN'S EVANGELICAL

AND REFORMED CHURCH

(United Church of Christ)

Francisco
The Rev. Virgil King, Pastor.
Every Sunday—
10:30 a.m.—Worship service.
Sunday school and catechism class.

CHELSEA BAPTIST CHURCH

377 Wilkinson St.

The Rev. James Stacey, Pastor

Every Sunday—
9:45 a.m.—Sunday school.
11:00 a.m.—Worship service.
Nursery care provided during all services.

ST. JOHN'S EVANGELICAL

AND REFORMED CHURCH

(United Church of Christ)

Francisco
The Rev. Virgil King, Pastor.
Every Sunday—
10:30 a.m.—Worship service.
Sunday school and catechism class.

CHELSEA MEDICAL CENTER

Every Other Wednesday—
1:30 p.m.—Worship service.

FIRST UNITED

PRESBYTERIAN CHURCH

Unadilla

The Rev. T. H. Liang, Pastor

Every Sunday—
9:45 a.m.—Sunday school.
11:00 a.m.—Worship service.

BAHA'I FIRESIDE

Every Thursday—
8:00 p.m.—At the home of Toby Peterson, 705 S. Main St. Anyone wishing to learn about the Baha'i faith is welcome.

NORTH SHARON BIBLE CHURCH

Sylvan and Washburne Rds.

The Rev. William Enslin, Pastor

Every Sunday—
10:00 a.m.—Sunday school.
(Nursery will be available.) Junior church classes.
11:00 a.m.—Worship service.
6:00 p.m.—Senior High Youth meeting. Youth Choir.
7:00 p.m.—Evening worship services. (Nursery available.)
All services interpreted for the deaf.
Every Wednesday—
7:00 p.m.—Bible study and prayer meeting. (Nursery available.)
Bus transportation available: 428-7222.

BAHA'I FIRESIDE

Every Thursday—
8:00 p.m.—At the home of Toby Peterson, 705 S. Main St. Anyone wishing to learn about the Baha'i faith is welcome.

NORTH SHARON BIBLE CHURCH

Sylvan and Washburne Rds.

The Rev. William Enslin, Pastor

Every Sunday—
10:00 a.m.—Sunday school.
(Nursery will be available.) Junior church classes.
11:00 a.m.—Worship service.
6:00 p.m.—Senior High Youth meeting. Youth Choir.
7:00 p.m.—Evening worship services. (Nursery available.)
All services interpreted for the deaf.
Every Wednesday—
7:00 p.m.—Bible study and prayer meeting. (Nursery available.)
Bus transportation available: 428-7222.

BAHA'I FIRESIDE

Every Thursday—
8:00 p.m.—At the home of Toby Peterson, 705 S. Main St. Anyone wishing to learn about the Baha'i faith is welcome.

NORTH SHARON BIBLE CHURCH

Sylvan and Washburne Rds.

The Rev. William Enslin, Pastor

Every Sunday—
10:00 a.m.—Sunday school.
(Nursery will be available.) Junior church classes.
11:00 a.m.—Worship service.
6:00 p.m.—Senior High Youth meeting. Youth Choir.
7:00 p.m.—Evening worship services. (Nursery available.)
All services interpreted for the deaf.
Every Wednesday—
7:00 p.m.—Bible study and prayer meeting. (Nursery available.)
Bus transportation available: 428-7222.

BAHA'I FIRESIDE

Every Thursday—
8:00 p.m.—At the home of Toby Peterson, 705 S. Main St. Anyone wishing to learn about the Baha'i faith is welcome.

NORTH SHARON BIBLE CHURCH

Sylvan and Washburne Rds.

The Rev. William Enslin, Pastor

Every Sunday—
10:00 a.m.—Sunday school.
(Nursery will be available.) Junior church classes.
11:00 a.m.—Worship service.
6:00 p.m.—Senior High Youth meeting. Youth Choir.
7:00 p.m.—Evening worship services. (Nursery available.)
All services interpreted for the deaf.
Every Wednesday—
7:00 p.m.—Bible study and prayer meeting. (Nursery available.)
Bus transportation available: 428-7222.

BAHA'I FIRESIDE

Every Thursday—
8:00 p.m.—At the home of Toby Peterson, 705 S. Main St. Anyone wishing to learn about the Baha'i faith is welcome.

NORTH SHARON BIBLE CHURCH

Sylvan and Washburne Rds.

The Rev. William Enslin, Pastor

BAHA'I FIRESIDE

Every Thursday—
8:00 p.m.—At the home of Toby Peterson, 705 S. Main St. Anyone wishing to learn about the Baha'i faith is welcome.

FIRST UNITED

METHODIST CHURCH

The Rev. Clive Dickens, Pastor

Thursday, May 1—
7:00 p.m.—Board of Trustees in the Litteral Room.
8:00 p.m.—Administrative board in the educational unit.

Friday, May 2—
12:00 p.m.—Church Women United-May Fellowship Day at Zion Lutheran.

Saturday, May 3—
12:00 p.m.—Senior citizens sauerkraut dinner in the social center.

Sunday, May 4—
10:00 a.m.—Worship service (nursery provided).
10:20 a.m.—Church school (kindergarten through sixth grade).
11:00 a.m.—Coffee and punch hour.

11:15 a.m.—Junior and senior high and adult church school.
Monday, May 5—
8:30 p.m.—Girl Scout—Cadets dinner in the social center of the church.

Wednesday, May 7—
9:00 a.m.—United Methodist Women general meeting. Program: "Adventures with Senior Citizens."

ST. THOMAS
EVANGELICAL LUTHERAN
Ellsworth and Haab Rds.

The Rev. Jerome Dykstra, Pastor

Sunday, May 4—
9:30 a.m.—Sunday school and Bible class.

10:45 a.m.—Worship service.
Tuesday, May 6—
4:30 p.m.—Confirmation class.
8:00 p.m.—Choir rehearsal.

Wednesday, May 7—
10:00 a.m.—Bible study.

OUR SAVIOR LUTHERAN

CHURCH

1515 S. Main, Chelsea

The Rev. William H. Keller, Pastor

Sunday, May 4—
9:00 a.m.—Sunday school and Bible class.

10:30 a.m.—Worship service.
Tuesday, May 6—
7:30 p.m.—Parent Effectiveness training.

Wednesday, May 7—
4:00 - 6:00 p.m.—Confirmation classes.
8:00 p.m.—Choir.

ST. JOHN'S

(UNITED CHURCH OF CHRIST)

Rogers Corners

The Rev. Carl Asher, Pastor

1883 Washtenaw Ave., Ann Arbor

Every Sunday—
10:30 a.m.—Sunday school, morning service.

GREGORY BAPTIST CHURCH

The Rev. Paul White, Pastor

Every Sunday—
9:45 a.m.—Sunday school.
11:00 a.m.—Morning worship.
6:00 p.m.—Young people.
7:00 p.m.—Evening worship.
7:30 p.m.—Thursday mid-week worship service.

BAHA'I FIRESIDE

Every Thursday—
8:00 p.m.—At the home of Toby Peterson, 705 S. Main St. Anyone wishing to learn about the Baha'i faith is welcome.

NORTH SHARON BIBLE CHURCH



Mrs. David Baran

Carol Wojcicki, David Baran Speak Vows Saturday Afternoon

Following a wedding trip to Aruba, newlyweds Mr. and Mrs. David Baran will make their home at 39 Hamilton Ave., Auburn, N.Y. The couple was married, Saturday, April 26 at 4 p.m. ceremony in the First Congregational church of Chelsea. The Rev. Carl Schwarm officiated.

The bride is the former Carol Ann Wojcicki, daughter of Mr. and Mrs. Sylvester Wojcicki of 716 Taylor St.

The bridegroom is the son of Mrs. Stephan Baran of Auburn, N.Y., and the late Mr. Baran.

For the late afternoon wedding Miss Wojcicki chose a white jersey dress with a lace overlay. Her veil was edged in white lace, and held in place by a Juliet cap. She carried a bouquet of white sweetheart roses, baby's breath, and ivy.

Her maid of honor, Mary Ann LaRose of Ann Arbor, was dressed in a pink empire-waist A-line gown, complemented by a floral jacket. She carried a bouquet of fugi mums. Other honor attendants dressed in blue gowns similar to the maid of honor's and complemented by blue floral jackets were the cousin of the bride, Miss Pamela Figg, of Mt. Pleasant, and Mrs. Walter Bazarnik of Lewiston, N.Y.

Miss Ellen Wagner of Ann Arbor, dressed in pink, also attended the bride.

The bridegroom's niece, Shani Baran, served as flower girl.

Attending the bridegroom as best man, was his brother, Robert, of Springfield, Vt.

Ushers were Stephan Baran, of Weedsport, N.Y., Michael Clark, of Knoxville, Tenn., Walter Bazarnik of Lewiston, N.Y., and the

Janet Currie, M. Picklesimer, Jr., Are Wed at Grace Bible Church

Janet Currie and Mitchell Picklesimer, Jr., exchanged wedding vows Saturday, April 26 in Grace Bible church, Ann Arbor.

Dr. Raymond H. Saxe officiated the 3 p.m. ceremony uniting the daughter of Mr. and Mrs. Kenneth M. Currie of Southgate with the son of Mr. and Mrs. Mitchell Picklesimer, Sr., of S. Main St.

The bride was dressed in a gown of ivory organza over taffeta, with a circular skirt and attached chapel train. Lace formed a bib on the bodice and deep cuff on the full bishop sleeve. Matching lace bordered the hem of the skirt. The cap of the chapel-length veil was of matching lace over taffeta and decorated with seed pearls. She carried a bouquet of white roses, stephanotis, and ivy.

Her maid of honor, Miss Carol R. Kuperus, the bride's college roommate, of Grand Rapids, was gowned in apricot polyester crepe, styled along colonial lines, with a u-shaped ruffled neckline trimmed in ivory lace, as were the short puffed sleeves. The gown gathered slightly at the waist and tied in a soft bow in back. Her flowers were a mixed bouquet of roses, daisies and baby's breath.

Other honor attendants to the bride were, Mrs. John Currie, the bride's sister-in-law, of Buffalo, N.Y.; Miss April Picklesimer, the bridegroom's sister, and Miss Marlene Hage of Grand Rapids.

The bridesmaids wore gowns styled identically to that of the maid of honor in colors of light green, blue, and yellow.

For her daughter's wedding Mrs. Currie chose a powder blue floor-length gown with a lace bodice and crepe skirt, long sleeves and a stand-up collar. A lavender orchid was pinned to her gown.

Senior Citizens Name Nominating Group

On Thursday, April 17, 21 members gathered at their meeting room for the monthly birthday pot-luck supper. The table was centered with a birthday cake made and decorated by Mrs. Robert Hochrein. An evening of singing and card playing topped off the celebration.

April 29, the members met for the regular business meeting. Sixteen members were present. Appointed to the nominating committee were Kathryn Dorer and Thelma Eiseman. Mrs. Dorer and Ruth Wenk were appointed to the pot-luck committee for May 15.

Senior Citizens have planned a trip to Holland for the Tulip Festival May 14. Sixteen members have signed up to go.

Because of other activities, senior citizens of the former Korner House, who planned a sauerkraut dinner, will not be able to use their meeting rooms. The dinner will be held in the Methodist Social Center. Each member is requested to bring his or her own table service.

YOUNG HOMEMAKERS

Young Homemakers, their mothers, and mother-in-laws enjoyed a salad supper at the home of Sharon Roehm, Thursday, April 24. There were 32 ladies present.

Co-hostesses were Shirley Trinkle and Elsie Heller.

A nominating committee of Arlene Bareis, Barb Halst, and Shirley Trinkle will present the slate of officers to be elected at the May 22 meeting.

Noah Webster published his American Dictionary of the English Language in April, 1828. A man of many talents, he also worked aggressively for educational reforms, postal inspections, unemployment insurance, census taking and education for women. Webster completed his dictionary in the study of his New Haven, Conn. home. The house now stands at Greenfield Village in Dearborn, one of nearly 100 historic buildings which trace America's past.

On May 10, 1781, the British abandoned Camden, their main terror post in South Carolina.

Mrs. Picklesimer chose a lavender floor-length gown with long sleeves. She too pinned a lavender orchid to her gown.

Anna Reitz of Southgate, and Jon Gibson of Ann Arbor, served the couple as flower girl and ring bearer.

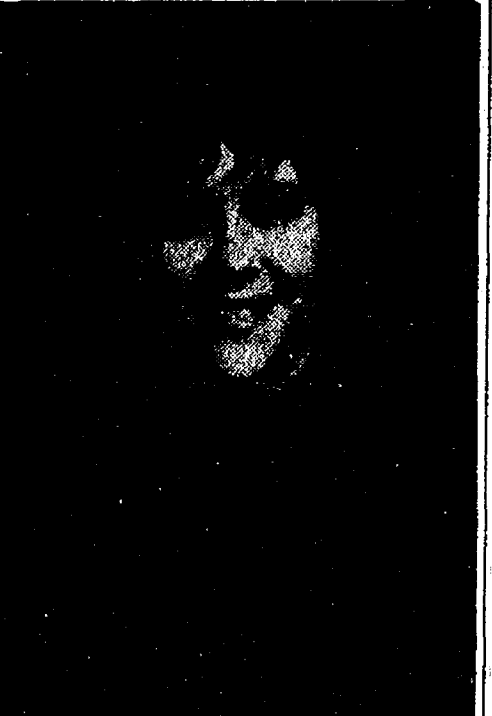
Ushers were the bride's brother John Currie of Buffalo, N.Y.; Glen Currie, the bride's cousin of Southgate, Rob Currie, the bride's brother, also of Southgate, Stephen Saxe, and Bill Behnke, both of Ann Arbor.

A reception for 300 guests followed in the Fellowship Hall of Grace Bible church.

The bride attended Taylor University in Upland, Ind., and graduated from Eastern Michigan University with a Bachelor of Science Degree in occupational therapy. She will serve a three-month internship at Henry Ford Hospital in Detroit, and another at Ypsilanti State Hospital.

The bridegroom attended Washenaw Community College for two years and then graduated from the University of Michigan in May 1973. He majored in history and social studies. He is presently teaching Junior and Senior high school students at Grace Bible Christian Academy.

Following a short vacation, the couple will make their home in Ann Arbor.



Nancy Wolf, Timothy Gross Wed Saturday in Ann Arbor Church

Nancy Wolf became the bride of Timothy Gross in a marriage ceremony on Saturday, April 26 in the Bethlehem United Church of Christ, Ann Arbor. The Rev. Orval L. E. Willmann officiated.

The bride is the daughter of Mr. and Mrs. Werner Wolf of Walsh Rd., Whitmore Lake and the bridegroom's parents are Mr. and Mrs. Harold Gross of N. Parker Rd.

The white crepe bridal gown was styled with Queen Anne sleeves, a high, open neckline and an attached chapel train. Venice lace accented the neckline and bodice and trimmed the bridal veil which was held in place with a Juliet cap. The bride carried a bouquet of white roses and miniature lavender carnations.

Mims Van Aken of Dexter served as maid of honor. Brides-

Police Nab Local Man Wanted on Bench Warrant

A local man wanted on a bench warrant for failure to pay fines and costs on a traffic charge was apprehended by village police Sunday evening, April 27.

Terry Brown Akers of 18601 M-52 was observed by officers heading west on Lincoln St. in a yellow Duster. The officers had direct knowledge that Akers was wanted on a bench warrant. Officers stopped Akers and advised him to report to the station, as the department had a warrant out for his arrest.

Akers appeared at the station, was transported to the county jail, and then to court where the judge ordered him to pay a fine of \$16 for failure to pay fines and costs related to charges of driving with an obscured driver's license.

Subscribe today to The Standard! To 475-1371.

Mr. and Mrs. Timothy Gross

Nancy Wolf, Timothy Gross Wed

Saturday in Ann Arbor Church

The bride is the daughter of Mr. and Mrs. Werner Wolf of Walsh Rd., Whitmore Lake and the bridegroom's parents are Mr. and Mrs. Harold Gross of N. Parker Rd.

The white crepe bridal gown was styled with Queen Anne sleeves, a high, open neckline and an attached chapel train. Venice lace accented the neckline and bodice and trimmed the bridal veil which was held in place with a Juliet cap. The bride carried a bouquet of white roses and miniature lavender carnations.

Mims Van Aken of Dexter served as maid of honor. Brides-

maids were Sue Macauley and Deb Gross of Dexter, Trudy Sanderson of Chelsea and Kim Wolf, the bride's sister. They wore orchid-colored, knit jersey, sleeveless gowns with floor-length capes. They carried bouquets of lavender orchids.

Brian Whitley of Dexter carried out best man duties. Ushers were Danny Baldus, Bob Ralford, Kevin Bradbury and Lawton Gross, all from Dexter.

A reception for 300 guests was held at the Chelsea Fairgrounds. Cindy Knickerbocker of Dexter assisted with the guest book.

For her daughter's wedding Mrs. Wolf wore a mint green knit dress and the bridegroom's mother chose an ivory gown with golden appliques.

Carrie Gross and Daniel Tomshany served as flower girl and ring-bearer.

The young couple will live in Dexter.

Dial-A-Garden, with pre-recorded daily gardening tips, is in operation 24 hours per day, 7 days per week (except Friday mornings). The Dial-A-Garden phone number is 994-1122. Dial-A-Garden received more than 1,500 calls during the first full week of operation.

During the week from Friday, May 2 to Thursday, May 8, people can dial and hear the following tips:

Friday and week-end, May 2—The numbers on Fertilizer Packages, Selecting Fertilizer.

Monday, May 5—Controlling Maggots in Radishes and Root Crops.

Tuesday, May 6—Sweet Corn in the Home Garden.

Wednesday, May 7—Prune Spring Blooming Shrubs after Bloom.

Thursday, May 8—Controlling Broadleaf Lawn Weeds.

Housewives May Become Coeds At College Week for Women

East Lansing—All women are invited to a four-day adventure as a Michigan State University coed during College Week for Women at MSU, June 16-19.

The theme for this year's event is "Change and Choices for Families." Through classes and assemblies, College Week participants learn more about themselves, their families and society.

The Week offers a wide range of classes such as "Do You Want More for Your Food Dollar," "Coping With Life's Changes," "Riding the Economic Escalator," "Weight Control," "Estate Planning," "Consumer Understanding," "Women—Potential and Perspectives," and many more.

Major changes affecting families is the topic of assemblies. State Representative H. Lynn Jondahl will discuss legislation affecting families. Cory Ser Vass, coeditor and publisher of "The Saturday Evening Post," will interpret media's affect on families.

Changing values, roles and lifestyles will be discussed by Dr. Beatrice Paolucci, professor in the Department of Family Ecology at MSU; and Dr. Lawrence Boger, dean of MSU's College of Agriculture and Natural Resources will speak on the economy.

There will be plenty of social activities in the evening—including planetarium shows, campus tours, swimming, theater, shopping, sing-alongs and girl talk.

Total cost is only \$50, which includes three nights lodging in an MSU residence hall, 10 meals and all assemblies and classes.

Commuters pay a \$12 fee that includes classes and assemblies, but no meals or lodging. And, one-day participants pay \$6 for that day's classes and lunch.

College Week for Women is an annual event, sponsored by the Family Living Education Program of the Co-operative Extension Service. For further information

and registration cards, contact your local county Co-operative Extension home economist.

What's Cooking In Michigan

By Larrestine Trimm
Michigan Dept. of Agriculture
Marketing Information Specialist

Wildflowers, morels and wild asparagus are glorious signs of spring in Michigan during the month of May. With colorful wildflowers, make it a rule to look, sniff the delicate fragrance if you so desire, but don't pick. Some species have become scarce, especially in the heavily populated southern part of the state, and for this reason many are protected by Michigan law which is enforced by the Michigan Department of Agriculture.

MDA Plant Industry officials say state law does not permit you to cut, remove or transport any of the following native plants without a bill of sale from the landowner. They are trailing arbutus, bird's foot violet, climbing bittersweet, club mosses, flowering dogwood, all Michigan holly, North American lotus, pipsissewa, and all native orchids, trilliums and gentians.

While wildflowers are there to be admired, morels and wild asparagus are there to be picked if you can find them. Delectable wild mushrooms are a gourmet's treat and that's why so many Americans flock to the countryside this time of year to participate in the sport of morel hunting.

Experts say morels aren't easily found because they don't grow in clusters, and they blend with natural backgrounds of dead grass, leaves and tree roots. But if you find one, several are likely to be nearby. MDA advises you to exercise caution. Of 2,000 kinds of wild mushrooms grown in the state, the half dozen species of morels are safest to eat.

You can often find wild asparagus quite close to home. Seeds from planted crops are blown afar by the wind and the result is a crop of the tasty fresh vegetable in fields, near streams and along Michigan highways. If you can't locate the wild kind, you can always buy it fresh. It's one of Michigan's leading commercial crops.

CORRECTION

Program chairman and her assistants for the April 22 meeting of the Chelsea Child Study Club were incorrectly reported. The story should have listed program chairman, Joan Eisele; and assistants, Nancy Grau, Margot Barlow, Jean French, Marti Neumeyer and Carol Dmoch.

May 11 Is Mother's Day*

and
**ALAN IS CELEBRATING BY HAVING A
10% TOP SHELF SALE
MAY 1 through May 10**

(*That's the day the kids read to you, Mom, while you do the dishes!)

Village Books of Chelsea

Alan and Jaynor Johnston
105½ S. MAIN ST. PH. 475-9260

Once in a lifetime

Chosen but once to be cherished forever, your engagement ring should be the finest. With Keepsake we offer both perfect quality and fine white color.



WINANS JEWELRY

Trade-Mark Reg.

SANDSCAPING DEMONSTRATION

A sandscaping terrarium demonstration will be held

THURSDAY and FRIDAY, MAY 1-2
10:30 to 11:30 a.m., and 1:30 to 2:30 p.m. each day

Sandscaping is a very old Indian custom that has been revived. There is no charge for this demonstration. Just stop in and see a work of art. We have a large selection of colored sand, 59c for a 1-lb. bag. Terrariums and green plants for anyone interested in doing their own work of art.

GAR-NETT'S FLOWER & GIFT SHOP

112 East
Middle St.

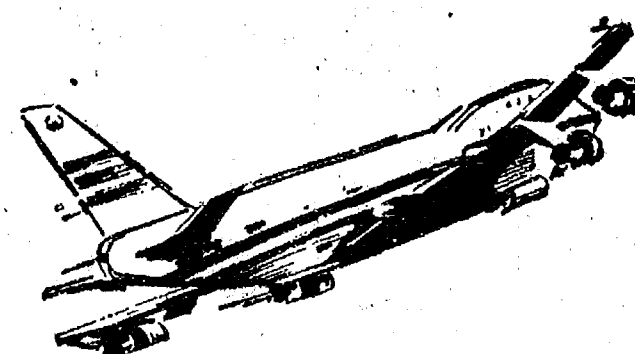


Phone
475-1400

Magic Mirror Beauty Salon

Open Tuesday thru Friday
9 a.m. to 9 p.m.
Saturday, 8 a.m. to 3 p.m.

PHONE 665-0816



JET SPRAY CARPET CLEANING SPRING SPECIAL

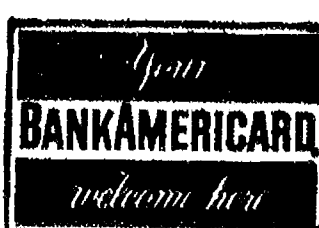
★ ANY LIVING ROOM
AND ADJOINING HALL **\$25**

★ EACH ADDITIONAL ROOM **\$10**

ASK ABOUT UPHOLSTERY CLEANING

★ **WORKMANSHIP GUARANTEED** ★

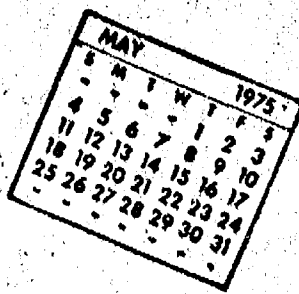
SPRING SPECIAL EFFECTIVE APRIL 24 - MAY 25



Phone John Lixey

761-3025 or 475-1509

Community Calendar



Community and school services meeting set for May 2 has been postponed. A later date has not yet been decided upon.

Old-Fashioned Barn Dance, Saturday, June 14, 9 p.m.-2 a.m., Charles Trinkle farm. All proceeds to Special Olympics for Sullivan school and Special Education program at Dexter public schools. Tickets at Vogel's, Chelsea Lumber, Pump & Pantry. 51

Chelsea Rebekah Lodge, No. 130, May 6 at 7:30 p.m. at the Hall.

Chelsea Community Farm Bureau, Thursday, May 8, 8 p.m. at the home of Mr. and Mrs. Anton Nielsen, 404 Garfield St. Mr. and Mrs. Dorr Whitaker assisting hosts.

Washtenaw County Unit, Michigan Diabetes Association, May 7, 9:15 a.m. at the home of Mrs. Marie Barnes, 2918 Parkridge Dr. Ann Arbor. Speaker: Dan Donigan, Director of Youth Activities, Michigan Diabetes Association. For transportation call, 475-7622.

Limaneers at the home of Mrs. Isabelle Broderick, May 8, 12:30 p.m. Pot-luck dinner.

Third annual Saline Jaycee Auxiliary Art Fair, May 3, 10 to 8 p.m., May 4, 11 to 6 p.m., at the Saline Farm Council Grounds on Saline-Ann Arbor Rd. Paintings, sculpture, woodcrafts, pottery, ceramics will be present. More than 60 artists in attendance. Anyone interested in renting a booth should call 429-4343. All proceeds go for community service projects.

St. Barnabas rummage sale, 4:30 p.m., May 3, 9 p.m. to 12 a.m.

American Legion and Auxiliary hospital equipment available by calling Pat Merkel at 475-1824.

Tours of Chelsea Community Hospital and surgical center are available for small groups. To arrange for tours, call: Neva Jordan, 426-8027, or Dorothy Miller, 475-5020.

Chelsea Home Meal Service delivers one hot meal a day to elderly and disabled living in the Chelsea area. For information call 475-8014 or 475-2923.

Chelsea Band Boosters meet second Thursday of every month, Chelsea High school band room, 8 p.m. All band members' parents are welcome.

Humane Society of Huron Valley has dogs and cats for adoption. Owners may reclaim their lost pets. Phone 662-5585. Open from 9 a.m. to 5 p.m. daily. Sunday, 1 p.m. to 5 p.m. 100 Cherry Hill Rd., quarter-mile south of Plymouth Rd. at Dixboro.

Chelsea Co-op Nursery applications for 1975 classes are now being taken. For information, call Jearl Mull, 426-8822. xadv12tf

Washtenaw County bookmobile, sponsored by the Washtenaw County Library will be at the North Lake United Methodist church, 1411 North Territorial, every other Wednesday from 4:25 to 5:10 p.m., beginning April 9.

Olive Lodge No. 156 F&AM regular communications, Tuesday, May 6, at the Lodge Hall, 7:30

Herbert J. McKune Unit No. 31, American Legion Auxiliary Mother-Daughter pot-luck, May 6, 6:30 p.m. at Legion Home. Bring dish to pass and table service. Regular meeting will follow.

Cavanaugh Lake-North Sylvan range, May 6, 8 p.m. at the home of Mrs. Nina Wahl, 4747 Clear Lake Rd. Bring your own table service and either sandwiches, Jell-O, or cake.

Rogers Corners Farm Bureau Friday, May 2, 8:30 p.m. at the home of Loren Koeniger, Fletcher Rd. Please note the date.

Former members of the Knights of Pythias or Pythian Sisters please call or write Maxine Quilan, 584 Pleasant Dr., Gregory 48137, phone 498-2114.

Young Homemakers, 8 p.m., May 22 at the home of Marie Colombo.

Inquiries regarding the Chelsea blood bank may be directed to Harold Jones in the event that Mrs. Dudley Holmes is unavailable, or to Robert Moyer, American Red Cross in Ann Arbor, 971-5300.

Weekly Tuesday Nite Singles Club, dance, 9 p.m. to midnight, Ann Arbor "Y," with live band.

AA and A1-Anon meeting, Monday evenings at Chelsea Hospital, 8:30 p.m. Closed meetings.

Pap tests are free for all area women, Tuesday mornings, at St. Joseph Mercy Hospital, Ann Arbor. Call American Cancer Society office, 668-8857 for appointment.

Chelsea Area Historical Society is still taking 1975 annual memberships. Applications for membership may be picked up at McKune Memorial Library, or write Box 334, Chelsea 48118, or telephone 475-7290 for more information.

Senior Citizen Fun Nite every Friday evening at 7:30.

Sylvan Township Board meeting the first Tuesday of the month, at 7 p.m., at Sylvan Township Hall.

Lamaze Association of Ann Arbor is now holding classes at the Chelsea Community Hospital. If interested, call 761-4402, or 475-9316.

Cub Scout Pack 455 Holds Pinewood Derby

The Pinewood Derby for Cub Scout Pack 455 was held Friday April 25 at South school. Many varied and interesting car designs were featured in the show. The boys put forth many hours of hard work in attempts to win places for their cars in this year's derby.

Winners are John Hoffman first; Danny Waldyke, second; Jeff Haist, third; and the Best of the Show went to Jay Davis.

Supervising the Derby were Paul Closson and Orville Tompkins.

The boys enjoyed refreshments following the Derby.

Plans Made for Bicentennial Committee

"It is time to think of the coming Bicentennial and begin planning as a community for the celebration that will be held in Chelsea during the coming year," said Frank White, chairman of the VFW Committee Project for the Bicentennial celebration.

White announced that an early meeting will be held at 8 p.m., May 9, in the VFW Hall 105-B N. Main St., "so we can begin planning."

Local organizations that plan to participate in Bicentennial celebrations should send two representatives or volunteers to the May 9 meeting.

Purpose of the meeting is to form a Bicentennial Committee to help plan and co-ordinate dates, organizations.

White reports that many organizations have been contacted and that the VFW Post will let all organizations use their meeting place for planning committees.

"White continued, 'cities and communities all over the United States have begun to make plans to celebrate our 200th birthday. We must too.'"

Boy Scout Troop Will Be Selling Safety Lightsticks

Troop 465 will be selling a safety lightstick, known as the unique, effective, cold liquid light, Cyalume, this Friday, May 2 from 7 to 9 p.m. The Scouts intend to make themselves quite visible Friday evening, as they and their light sticks will be dispersed around the streets in Chelsea.

"They will be all around town," said their scoutmaster, Art Steinaway.

Cyalume is a compact, completely self-contained, liquid lighting device. This chemical light is discernable for long distances. It is safe, and gives up to three hours of useful working light. Its uses are limitless. Good for the home, car, camping and boating.

Proceeds from the sale will go to the scouts to help defray expenses incurred from their camps this year.

BIRTHS

A son, Samuel Lucas, born April 10, at St. Joseph's Hospital in Ann Arbor, to Wes and Shirley Stinehelfer, of 738 S. Main. Maternal grandparents, Mr. and Mrs. Wiley Howard of Chelsea. Paternal grandparents, the late Ralph and Betty Stinehelfer of Chelsea.

A daughter, Felicia Lynn, April 26, at St. Joseph Mercy Hospital, Ann Arbor, to Hazel and Domingo Hermosillo of 3191 Jeannette Dr. Maternal grandmother is Mrs. Hazel D. McCoy of Pinckney. Paternal grandparents are Mr. and Mrs. Fernando Hermosillo of Belleville.

Jane Belser on Women's Varsity Tennis Team At Kalamazoo College

Jane Belser, daughter of Mr. and Mrs. F. C. Belser of 216 Park St., Chelsea, Michigan is a member of the Kalamazoo College Women's Tennis team. Jane is a graduate of Chelsea High school, and is one of eight freshmen to make the varsity tennis team at Kalamazoo College.

Col. Stanley Knickerbocker Awarded Commendation Medal

An Air Force lieutenant colonel from Chelsea was decorated with his second award of the U. S. Air Force Commendation Medal in recent ceremonies at Langley AFB, Va.

Colonel Stanley P. Knickerbocker, brother of George and Ray Knickerbocker of Chelsea, was cited for meritorious service as chief of plans and training for the 19th Tactical Air Support Squadron at Osan AB, Republic of Korea.

Now assigned at Langley, he serves as commander of the 316th Organizational Maintenance Squadron, a part of the Military Airfield Command.

Colonel Knickerbocker is a veteran of the Korean and Vietnam wars and holds the aeronautical rating of command pilot.

A 1951 graduate of Chelsea High school, he earned a BS degree in 1956 from the University of Michigan where he was commissioned through the Air Force Reserve Officers Training Corps program.

His wife, Dianne, is the daughter of Mr. and Mrs. Wilmo Weevie of 27754 Santa Ana Dr., Warren.

Girls Track Team Sets Two School Marks

(Continued from page one)

Other Chelsea placers in the meet are as follows.

Shot put: 3rd, Annette Gaken, 26'10".

Long Jump: 1st, Kathy Treado, 14' (new school record).

High Jump: 2nd, Leigh Ann Hafer, 4'6"; 3rd, Kathy Treado, Shelly Warren.

800 Relay: 1st, Sue Frisbie, Kathy Treado, Angie Merkel, Carolyn Schardein, 1:37.3.

800 Run: Shelly Warren 2:39. 110 Hurdles: 3rd Monica Hanna, 18.5.

1 Mile Run: 1st, Judy Powers, 6:20.9; 2nd, Emily Bonus, 6:23.2. 100-Yard Dash: 1st, Susan Frisbie, .12.0 (new school record).

220-Yard Dash: 1st, Susan Frisbie, .28.0; 3rd, Colleen Collins, .29.9.

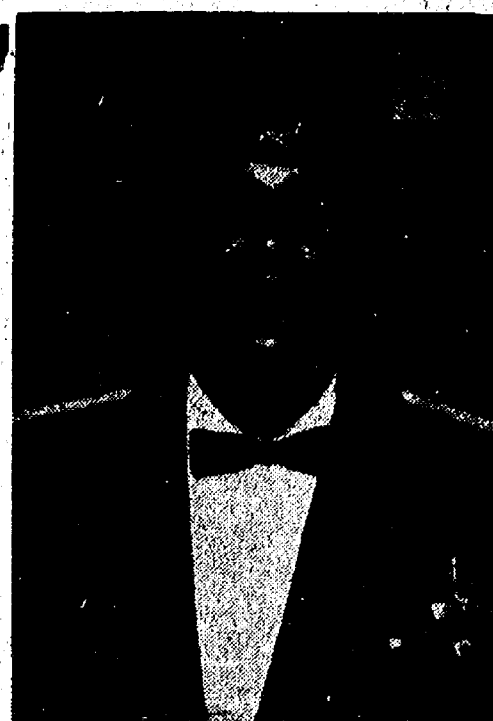
440-Yard Dash: 2nd, Angie Merkel, .67.6; 3rd, Monica Hanna, .70.8.

2-Mile Run: 3rd Tammy Puglisi 16:10.2.

1 Mile Relay: Warren, Gaken, Penny Collinsworth, Powers, 4:39.7.

L'Roy reported, "It was a hard meet to lose." And, of course, the girls hope to do better in their next meet against Jackson Northwest on the opponent's track.

The girls track team now stands at one win and two losses.



STANLEY KNICKERBOCKER

Registration Fee Of \$3 Required for Babe Ruth Players

A \$3 fee will be requested from boys interested in registering for Chelsea Babe Ruth ball teams this summer.

Registration for the 1975 season will be held Saturday, May 3 at the high school athletic field, 5:30 p.m.

"Payment of the \$3 fee will be enforced," says Coach Dave Lukasiak, "before a boy will be allowed to participate in the program."

Following registration, a short practice for all newcomers to the program will be held. This will enable the coaches to determine who is capable of playing on what team.

Questions may be directed to Lukasiak, director of the Babe Ruth program, Saturday.

Bicentennial Belts Authorized for Soldiers

Selected officers and enlisted men at Fort Lee, Va., will be issued a special belt as part of the observance of America's Bicentennial, Sgt. Jones, local Army representative, said.

The belt is of black leather, two inches wide with an eagle face design on the belt plate. The belt was authorized for all soldiers in the 1830s but was dropped as an item of enlisted equipment in 1881. It was retained for officers' dress blue uniforms until 1941.

The belts are to be worn as a tribute to the nation's leaders who have served during the Army's 200 years of growth and achievement, said Sgt. Jones.

Subscribe today to The Standard!

Baseball Team Loses Out in 10th to Saline

In their first league game of the season against Saline, Chelsea lost in the 10th inning by one point. Final score for the game was Saline 9, Chelsea 8.

Called a "heartbreak loss," by Coach Phil Bareis, the Bulldogs held a 7-7 score with Saline through four innings of play with

neither team scoring. In the 10th and final inning, the tie was broken when Tim Reed hit a triple. However, Saline came back, scoring two runs to win the game.

Reed also had three other hits. Randy Guenther and Todd Orbring each had two hits, while Paul Wood had a three-run home run in the second inning.

The second game was canceled because of darkness.

JV Baseball Team Downs Saline, 4-2

The Chelsea JV baseball team opened league play, Friday, April 25, with a 4-2 victory over Saline.

Behind the one-hit pitching of John Adams, the Bulldogs scored once in the first and three times in the third. Leading hitters for the Bulldogs were Mike Check with a double, a single and one run batted in; John Adams with two runs batted in; Ernie Hadley with one run batted in; and singles by Rick Davis and Tony Robards.

On the way to his second victory against no defeats, Adams allowed no walks while striking out three. He retired the side in order in five of the seven innings.

With a season record of 2-2, the Bulldogs' next game will be Friday against Lincoln's Railspitters.

Pinckney Area Youth Earns Wings

Navy Ensign Michael R. Behrent, son of Mr. and Mrs. Henry L. Behrent of 4653 Oaklawn Dr., Pinckney, was designated a naval aviator and received his "Wings of Gold" during ceremonies at the Naval Air Station, Corpus Christi, Tex.

He has completed more than a year of intensive ground and in-flight instruction and will now be assigned to specialized advanced training.

Baseball Team Splits 2 With Stockbridge

(Continued from page one)

players in the seventh, gave them the game.

Chelsea had five hits, with Anthony Houle getting a triple and single. Steve Figg drove in three runs with a first inning double. Ties MacCollum and Todd Orbring collected the other two hits.

In the second game of play, Chelsea led all the way. The score was 0-0 until the second inning, when the Bulldogs hit for three runs. Following two innings without scoring, Chelsea picked up one run in the fifth and three in the sixth to win the game.

Winning pitcher was Todd Orbring, who pitched a full seven innings, walking three, striking out three, and allowing four hits.

Don Nadeau and Paul Wood shared catching duties. Nadeau caught for the first five innings, when teammate Wood relieved him.

Nine different players hit for Chelsea. Jim Marshall hit a double in the sixth inning, driving in two runs. John Toon, Dale Schoenberg, Randy Guenther, Joel Sprague, Don Nadeau, Randy Musbach, Tres MacCollum and Paul Wood each had a hit.

The next game scheduled for the Bulldogs is Friday, May 2 against Lincoln on the home diamond.



MARY MCCLEAR

Mary McClear Graduates With Degree in Nursing

Mary McClear of Chelsea was among more than 400 graduates at Mercy College of Detroit who received their diplomas in commencement exercises held Sunday, April 26. Mary received a Bachelor of Science degree in nursing.

Candidates for degrees were presented by Dr. Milton K. Snyder, academic dean, to Sister Agnes Mary Mansour, Mercy president, who conferred the degrees.

Elizabeth Janeway, author and social historian, addressed the graduates. Her topic was "Men and Women, Changing Roles in a Changing World."

A reception for graduates, parents and friends was held in the Student Center following commencement exercises.

Mary is the daughter of Mrs. Virginia McClear of 321 Elm St.

GIRLS SOFTBALL SCHEDULE

May 2—Lincoln*away
May 5—Grass Lakeaway
May 9—Novi*away
May 13—Brighton*home
May 20—Willow Runhome
May 27—Dexter*away
State Girls Softball Tournament.
*Denotes league games.

CHELSEA LUMBER

GIVES YOU

33% OFF

YEAR-ROUND

KITCHEN CABINETS

WHY PAY MORE!

500 MERILLAT CABINETS & VANITIES IN STOCK!

GO GAMIBLES

EARLY BIRD SALE

SAVE TO \$4

TURF BUILDER
5,000 SQ. FT.
7.95 REG. 8.95

10,000 SQ. FT. **13.95** REG. 16.95
15,000 SQ. FT. **19.95** REG. 23.95

Turf Builder helps produce thick, green lawns. Long-lasting feeding. 56-2860, 1,2

SAVE \$5

SCOTTS 18-INCH LAWN SPREADER
24.95 REG. 29.95

With fingertip on-off control, rate setter. 30-8818

COMPLETE LINE LAWN & GARDEN NEEDS

MOTHER'S DAY SPECIAL!

FREE SKILLET

DIRECT TO YOU FROM GE WHEN YOU BUY AN ELIGIBLE* Portable

GE Potscrubber Dishwasher

OFFER GOOD APRIL 1st—MAY 11, 1975
*ELIGIBLE MODELS GSC41, GSC46
VOID WHERE PROHIBITED BY LAW OR TAXED

MORE THAN JUST A DISHWASHER

The Potscrubber Dishwasher

General Electric can show you this. Because we have the dishwashers that will do this.

BEFORE **AFTER**

The brushless water action that washes pots, pans and crusty casseroles sparkling clean; plus, your Potscrubber dishwasher is safe enough for your finest china and crystal!

2 GREAT POTSCRUBBER MODELS...
with GE's exclusive Power Scrub, the brushless water action that washes pots, pans and crusty casseroles sparkling clean; plus, your Potscrubber dishwasher is safe enough for your finest china and crystal!

4 PUSHBUTTON CYCLES
• Power Scrub, Normal Soil, Short Wash and Rinse & Hold • Automatic Detergent & Rinse-Glo Dispensers

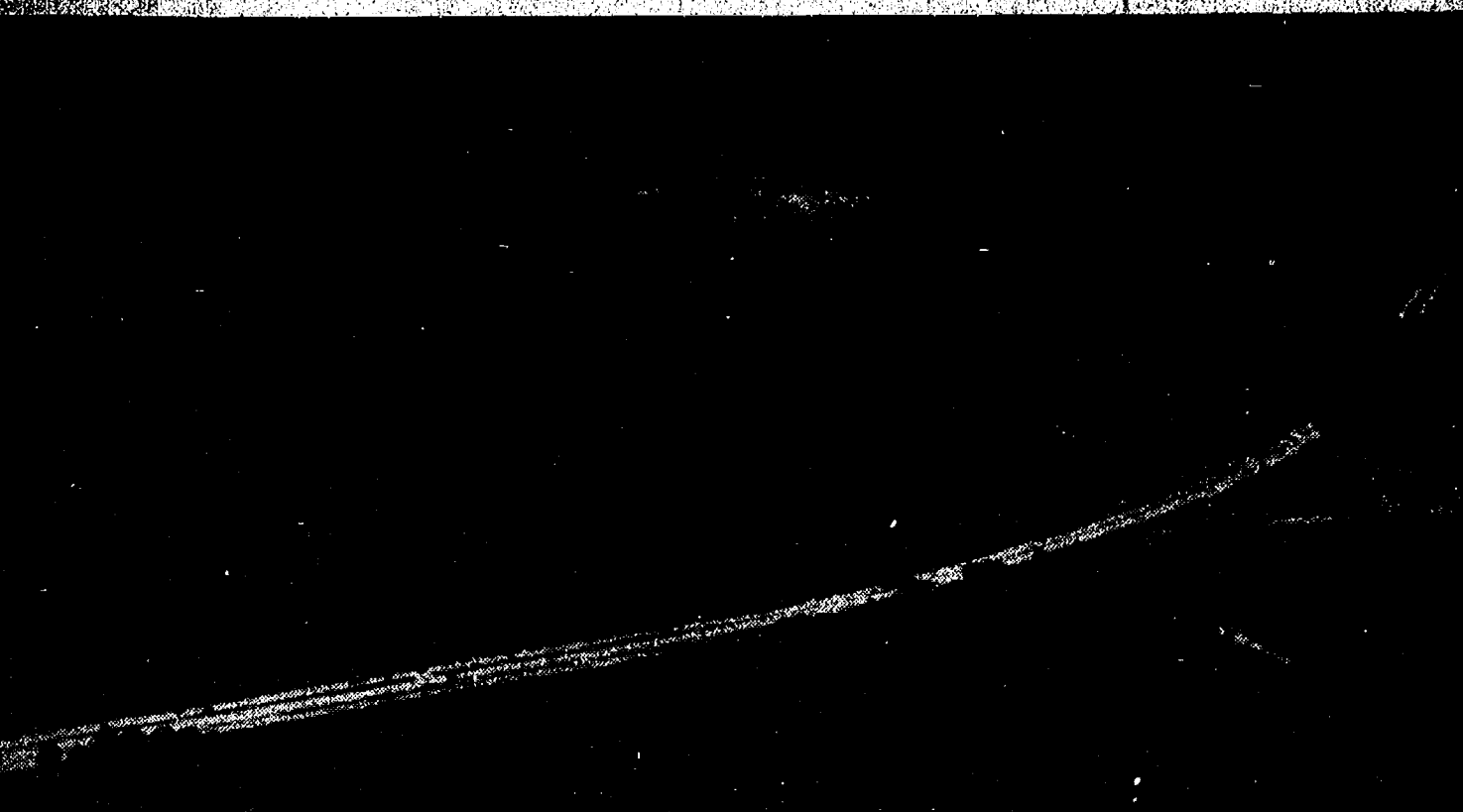
Model GSC461

5 WASH CYCLES
• Includes Power Scrub, Normal Soil, Rinse & Hold, China & Crystal plus Plate Warmer Setting • Dial-A-Level Rack—adjusts easily to fit load

Model GSC465

HEYDLAUFF'S

113 North Main Ph. 475-1221



RECOGNIZE THIS SCENE? It is the photograph on the cover of the 1975 State of Michigan Official Transportation Map. In the foreground of the picture is Interstate Highway I-96 which is used by millions of motorists each year as they travel between Detroit and Lansing—while in the background sailboats dot Kent Lake in Kensington Metropark southeast of Brighton . . . one of Michigan's leading year-around playgrounds. Kensington Metropark, opened in 1948, was the first of 10 Metroparks to be developed by the Huron-Clinton Metropolitan Authority for the citizens of the counties of Livingston, Macomb, Oakland, Washtenaw and Wayne.

Photo Depot Opened By Otto, Jennings

Their business card features an old-time locomotive, burning off smoke which forms a ring around bold letters, "Photo Depot 107 1/2 S. Main St."

Just what is a Photo Depot? A place to drop off film? A processing lab? "No," protest its owners Vern Otto and Dick Jennings, "It's a photography studio."

Located above Vogel's Store in a neat, newly-decorated nitch, Vern and Dick told of their new business enterprise and how they came together . . . and just how they decided to call their studio "Photo Depot."

"We thought it was a catchy sound," said Otto. "Jennings and Otto sounded more like a Vaudeville act than a photography studio," added Dick, "so we decided on this, since we are near the railroad station."

Their "depot," as they call it, carries out a railroad theme; from the minute one walks up the yellow-orange carpeted stairway, to the antiqued gold-green door. Beside the door, a small locomotive rests on the wall, a handy holder for the pair's business cards.

Upon entering their business, one is met with mirrored replicas of old time trains, freshly white-washed walls and old wood panel-

Girls Softball Team Defeats Stockbridge

In a game played on their home diamond Tuesday, the Chelsea girls softball team defeated Stockbridge, 12-2.

Brenda Salyer was the winning pitcher, going the entire game and allowing only five hits by the Stockbridge girls. The Chelsea team had a total of 16 hits. Teresa Breza and Kim Moore had three hits each. Kathy Schmitke had two singles, and Debbie Schleicher had a triple.

Coach Ann Schaffner reported that field play was much improved in this non-league game. Friday, May 1 the girls will play their second league game of the season at Lincoln.

Army Phasing Out Two-Year Enlistments

As of this July, the minimum term of enlistment in the Army will be three years. Until then the Army is accepting enlistments for two years only from those volunteering for Combat Arms, says local Army representative Sgt. Jones.

With a minimum enlistment of three years, the Army will minimize personnel turnover, reduce training costs, and increase experience levels, Sgt. Jones said.

JV Track Team Posts Two Early Victories

With two winning meets under their belts, the Chelsea High school JV track team is off to a fine start for the '75 track season.

However, Coach Pat Clarke reports the toughest meets are yet to come. In the next two weeks, the Bulldogs will meet Saline and Tecumseh, both who hold undefeated records so far. Saline is especially noted to be a tough contender.

In their first meet of the season, held Tuesday, April 21, Chelsea took Dexter, 90-42.

While Chelsea split 18 first places evenly with Dexter, it was 14 seconds that gave them the points to win against their opponents.

Coach Clarke was especially pleased with the relay team of Jeff Smith, Bob Ball, John Whitaker, and Alan Augustine who took the 880-yard relay with a time of 1:49.1.

Gregg Reed gave an exceptional individual performance, taking three firsts in the high jump, pole vault and 100-yard low hurdles.

Chelsea Placers:

Shot Put: 1st, Scott Powers, 42'7 1/2"; 2nd, Bob Ball, 40'10"; 3rd, Tom Bareis, 34'9"

High Jump: 1st, Gregg Reed, 5'2"; 2nd, Chris Steinaway, 4'8"; 3rd, Todd Otto, 4'4"

Long Jump: 2nd, Joe Verway, 14'3"; 3rd, Jim Brown and Scott Beyer, 13'7"

Pole Vault: 1st, Gregg Reed, 9'; 2nd, Jeff Smith, 8'6"; 3rd, Bob Ball, John Whitaker and Alan Augustine, 1:49.1.

880-Yard Run: 1st, Scott Beyer, 2:25.5; 2nd, Barry Scott, 2:36.0; 3rd, Joe Marienette, 2:38.0.

60-Yard High Hurdles: 1st, Doug Wetzel, 9.8; 2nd, Chris Steinaway, 10.7.

100-Yard Dash: 2nd, Chris Minick, 5:35; 3rd, Craig Minick, 5:36.

100-Yard Low Hurdles: 1st, Greg Reed, 13.1; 2nd, Doug Wetzel, 15.0; 3rd, Jesse Coburn, 15.3.

60-Yard Dash: 1st, Bob Ostrander, 7.8; 2nd, Joe Verway, 7.65.

75-Yard Dash: 2nd, Jeff Scrip-ter, 8.9; 3rd, Mike Hardy, 10.1.

220-Yard Dash: 2nd, Bob Ball, 27.5; 3rd, Bob Usher, 30.0.

1-Mile Relay: 2nd, Chelsea (team of Beyer, Moore, Scott, and Minick), 4:34.

440-Yard Relay: 1st, Chelsea (team of Scrip-ter, Young Whitaker, and Augustine), 52.9.

Greg Reed continued his fine performance last Friday in a meet against Novi, as once again he took firsts in the high jump pole vault, and 100-yard low hurdles. Chelsea defeated Novi, 97-37.

This second meet found Chelsea reversing itself from the scoring in their first season meet against Dexter; the Bulldogs took 12 firsts and evenly divided the second places with their contenders.

Chelsea Placers:

Shot Put: 1st, Scott Powers, 44'6"; 2nd, Bob Ball, 43'5"; 3rd, Tom Bareis, 32'6"

High Jump: 1st, Gregg Reed, 5'2"; 3rd, Jesse Coburn, 4'3"

Long Jump: 2nd, Jeff Smith, 15'3"; 3rd, Joe Verway, 15'1"

Pole Vault: 1st, Gregg Reed, 9'; 2nd, Dave Stock, 8'8"; 3rd, Damian Marzec, 8'.

880-Yard Relay: 1st, Chelsea (team of Smith, Ball, Whitaker and Young), 1:55.7.

880-Yard Run: 1st, Scott Beyer, 2:34.1; 2nd, Barry Scott, 2:40.6.

60-Yard High Hurdles: 1st, Doug Wetzel, 10.2; 2nd, Chris Steinaway, 11.4; 3rd, Damian Marzec, 14.0.

1-Mile Run: 2nd, Chris Minick, 5:42; 3rd, Craig Minick, 5.45.

100-Yard Dash: 2nd, Joe Verway, 12.6.

440-Yard Dash: 1st, Jeff Smith, 64.3; 3rd, Bill Moore, 66.3.

100-Yard Low Hurdles: 1st, Greg Reed, 13.5; 2nd, Doug Wetzel, 15.2; 3rd, Pat Murphy, 15.3.

60-Yard Dash: 1st, Joe Verway, 7.4; 2nd, Bob Ostrander, 7.6.

75-Yard Dash: 1st, Jeff Scrip-ter, 9.5; 3rd, Mike Hardy, 10.1.

220-Yard Dash: 1st, Bob Ball, 27.0; 3rd, Jesse Coburn, 30.0.

440-Yard Relay: 1st, Chelsea (team of Scrip-ter, Young, Whitaker and Ostrander), 56.7.



THE CATHEDRALS, a quartet of Christian gospel singers, will perform at Chelsea High school Tuesday evening, May 6, at 7:30 p.m. Pictured from left to right are members of the quartet, Has-

Gospel Singers Appearing at CHS

A quartet of Gospel singers, known as the Cathedrals will perform at Chelsea High school May 6 at 7:30 p.m.

The Cathedrals are from Stow, O. This quartet of talented Christians is one of the most popular in America today. They take their style of Gospel music to churches and auditoriums in personal appearances each week. Their recordings are said to be some of the best on the Gospel recording scene.

Members of the Cathedrals are: Roy Tremble, tenor; George Ammon Webster, baritone and bass guitarist; and George Younce, bass singer and master of ceremonies for the group.

The Cathedrals' board a bus each week traveling around the country to sing about the Christian life.

Tickets for the 7:30 p.m. performance may be bought in advance or at the door.

For advance tickets, call 475-8529 or 475-8398.

Letters to the Editor

To the Editor:

There is a problem in the Chelsea area that drives me crazy when I drive down the Waterloo Rd. area. The road is cluttered with cans and bottles and debris. Chelsea puts up signs that Chelsea is a progressive community, which I doubt very much. The Waterloo Rd. is a disgrace to every person living in this area. I have lived around here all of my life and it gets worse every year. The people of Michigan are a disgrace to the nation. My husband and I traveled all through the west to the coast last summer up through Canada and never did we see any area looking like this state.

I want to commend a handful of men and boys that I saw trying to clean up the sides of the roads. I cannot believe that people can be such hogs, but when one looks at the sides of the roads the facts are there. I wonder if anybody else feels the way my family does.

An unhappy citizen.

Golf Teams Both Lose to Saline

In their first conference outing to Saline, the Chelsea High school varsity golf team lost to their opponents on the Brookside course, 159-161.

Compiling the 161 score for Chelsea, was Mike Fouty who shot a 38, another 38 shot by Roger Policht, Jeff Policht shot a 42 and Vic Steinbach a 43.

Chelsea will play Lincoln Friday on the home Inverness course.

In junior varsity golf action the Saline team defeated Chelsea in an amatch with final scores of 177-186.

Rep. Carr To Stop In Chelsea Friday

The mobile mini-office belonging to U.S. Congressional Representative for the second congressional district, Robert Carr, will visit Chelsea this Friday.

The mobile office is scheduled for a one and one-half hour visit May 2 from noon to 1:30 p.m. in front of the Post Office on Main St. Representatives from Carr's office will be on hand to chat, answer questions, and assist in solving area resident's problems, at the local, state, and federal levels of government.

RICK'S MARKET

Just North of Chelsea on M-52 "The Friendly Store" Phone 475-2898

HANS MEAT SPECIALS

CHUBBY KNOCKWURST	lb.	\$1 ³⁹
PEPPER HAM	lb.	\$1 ⁷⁹
COUNTY LINE COLBY STORE CHEESE	lb.	\$1 ⁴⁹
SPARTAN BREAKFAST TREAT	1/2 gal.	75 ^c
MORTON WATER SOFTENER SALT	80-Lb. Bag	\$2 ⁹⁹
SAVE! PURINA DOG CHOW	SAVE \$1.00 50-Lb. Bag	\$9 ⁴⁹
12-OZ. CANS R. C. COLA	6 pac	\$1 ¹⁹
ECKRICH BOLOGNA	1-Lb. Pkg.	\$1 ⁰⁹
ECKRICH FUN FRANKS	1-Lb. Pkg.	89 ^c

Girls Varsity Softball Team Loses in First Conference Game

Chelsea girls varsity softball team was wiped out in their first Southeastern Conference game of the season played last Friday on the Chelsea field against Saline. The Salinians took their opponents, 15-4.

Chelsea was limited to just four hits by Saline's pitcher, Cindy Wright, who struck out seven Chelsea batters.

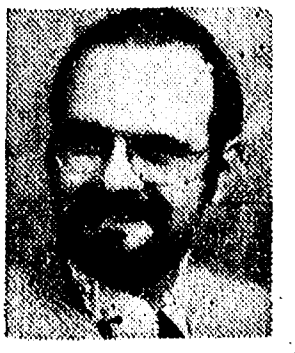
Chelsea scored all four of their runs in the fourth inning on singles by Diane Pletcher, Sue Skittenheim, Kim Moore and Char Steinaway; and a walk to Sue Schulze.

Coach Ann Schaffner attributed the loss to "the numerous number of errors committed by Chelsea."

Chelsea will play Lincoln Friday on the opponents' field.

You and Your BUSINESS

... one of the reasons we're in business . . . with the "know how" to combine all your policies into a convenient, monthly payment package at a fair price. Check the facts



DAVE ROWE
107 1/2 S. Main
Chelsea, Mich.
Ph. 475-8065

FARM BUREAU INSURANCE GROUP

SAVE \$\$ ON BAND INSTRUMENTS

DISCOUNT PRICES on all NEW INSTRUMENTS

ALSO AVAILABLE: USED-RENTALS

Al Nalli Music, your local music store, is all ready to offer you a savings towards the investment of a band instrument for your child. Expert help will be available to you when selecting your instrument. We have the right one to fit your budget, whether it be new or used. We also offer the rental-purchase program. Repair service is available and guaranteed at Nalli's. In addition, we carry all Method Books and Instrument Supplies.

FREE 1 Year Service on New Instruments Purchased from

AL NALLI MUSIC

102 E. MIDDLE, CHELSEA PH. 475-7215

- YOUNG -

We list and sell lake, country and town properties. Eugene Young, Real Estate & Builder, 878-3792, 11506 Dexter-Pinckney Rd., Pinckney 48169. x34tf

WE BUY vacant land, lots, acreage, or farms. Cash or terms. Washenaw Active Homes, Call 485-7355. x23tf

C—ustom Built Homes

O—h! We Remodel too

U—can count on us

N—o Job Too Small

T—rim Inside & Out

R—ough-in Only If

Y—ou Want to Finish

S—iding Aluminum, 5" Gutters

I—mmediate Attention

D—ALE COOK & CO.

E—stimates, Free

BUILDERS

Please Call

475-8863

DALE COOK

171f

General Carpentry
Also Repairs

Chelsea Ph. 475-9209

x47tf

FOR SALE—1971 Capri, new tires, good running order, \$1,400. 1970 Ford Maverick, stick shift, 6-cyl., new tires, \$1,000. Ph. 475-1509 after 7 p.m. x46

GUITAR LESSONS—\$2.50 half hour with experienced instructor. Marianne Hoover, Area code 517-596-2502 persistently. x48

FOR SALE—Two Pinto horses, broken to saddle and harness. With harness, wagon, saddles, bridles optional. Ph. 475-2594. x46

TO RENT—Married couple with 16-year-old son wants 2- or 3-bedroom house in Chelsea School District. Call after 6:30 p.m. 475-1682. x46

20% OFF

UNTIL JUNE 1

If you missed Spring '75, reserve your choices now for next Spring. Save too, with 20% off current prices. Dwarf, semi-dwarf, and standard size fruit trees, ornamental trees and shrubs, shade trees, roses.

Now selling Green Thumb Hobby House greenhouses.

Elson Bettner

(313) 475-9223

15700 Cassidy Rd.

Grass Lake, Mich. 49240

STARK BROS.

Nurseries and Orchards Co.

FOR SALE—Aluminum siding, first grade, white, \$34 per 100 sq. feet; insulated, \$37; second, \$26. Bring this ad and get \$1 per square off. 36215 Joy Rd., Westland. Please call first, GA7-3309. x50

FOR SALE—Registered Pinto mare with registered 1/2 Arab colt. Will sell together or will sell colt at weaning. Large Golden Palomino pony mare, part Arab. Would be good 4-H pony. Also used pony saddle. 665-3070. x46

FOR SALE—1975 Blazer 350 automatic, p.s., p.b., roll bar, 31 gal. gas tank, snow tires, one month old. Ph. (517) 596-2897. x46tf

BID AUCTION—On Saturday, May 10, Scout Troop 425 will hold a sealed bid auction of the following items: 5 tents, 3 canoes, and 9 paddles. Time is between 10 a.m. and 4 p.m. with items on display at the former Buick garage, N. Main St., Chelsea that day. x46

FOR SALE—Corn crib, \$20. (Also makes good kids' club house). Phone 475-2382. x46

A1 USED CARS

AT OUR TRIANGLE LOT

M-52 and Old Manchester Road

74 PINTO 2-DR. \$2395

Automatic

74 GRAN TORINO \$3495

4-DR., factory air

74 PINTO 3-DR. \$2495

Automatic

71 MAVERICK 2-DR. \$1695

Low mileage

71 TORINO 2-DR. \$1495

V-8 automatic

71 MAVERICK 2-DR. \$1695

Grabber

71 MAVERICK 2-DR. \$1695

Automatic

70 CHEVROLET \$1295

Station wagon

70 MAVERICK 2-DR. SAVE

Runs good

69 CHEV 4-DR. SAVE

68 CHEV 2-DR. SAVE

67 CHEVELLE 2-DR. SAVE

TRUCKS

WE NEED USED TRUCKS

71 RANCHERO \$1595

V-8, automatic

66 DODGE 1/2-TON \$195

Pick-up

62 CHEV 1/2 TON \$195

Pick-up

SEE

Geo. Palmer

John Popovich

The
Happyface
Place
We're in business
to make you smile

SEE

Lyle Chriswell

Bennie Hayes

Jock Crawford

PALMER FORD

Since April 1912

Mon, Wed, Thurs 9 a.m. to 5 p.m.

Fri 9 a.m. to 5 p.m. Sat 9 a.m. to 5 p.m.

WANT ADS

FOR REAL DOLLAR SAVINGS be sure and see us before you buy any new or used car. Palmer Motor Sales, Inc. Your Ford Dealer for over 60 years. 2tf

WANT TO RENT—Hay and corn

ground for this season. Call 475-2771. x28tf

FOR SALE—Indian cents, postcards, books, foreign coins, Australian opals, and other articles. Lawrence E. Gulnan, 1571 Sugar Loaf Lake. Call 475-2317. x37tf

WEDDING STATIONERY—Prospective brides are invited to see our complete line of invitations. The Chelsea Standard. Ph. 475-1371.

REDUCE EXCESS FLUIDS with Fluidex tablets, only \$1.89 at Chelsea Pharmacy. x49

Complete

Body Repair

Service

Bumping - Painting
Windshield and Side Glass
Replacement

Free Pick-up & Delivery
Open Monday Until 9
CONTACT DON KNOLL
FOR FREE ESTIMATE

Village

Motor Sales, Inc.
IMPERIAL - CHRYSLER
DODGE - PLYMOUTH

Phone 475-9661

1185 Manchester Rd., Chelsea

Hours: 8 a.m. to 6 p.m.

Tues. thru Fri. Until 9 Monday.

9 a.m. to 1 p.m. Saturday. x40tf

GUTTERS

SEAMLESS aluminum eaves-
troughs installed. White and
brown. Call Wilson Metal Shop,
Manchester, 428-8498. x8tf

McCulloch

Portable Generators
Chain Saws

WE SELL, SERVICE,
SHARPEN AND TRADE.

Chelsea Hardware

21tf

We have a good selection of birch
clumps, Crimmon King, Norway
maples, flowering crab and Moun-
tain ash. We also have spreading
and Hicks yews, pyramid and
globe Arbor Vitae, Pfizer junipers.
You dig. x50

Faist's

Evergreen Nursery
Ph. (517) 522-4568

11362 Trist Rd., Grass Lake, Mich.

x2

ALUMINUM SIDING, trim and
gutters. High quality work at
reasonable prices. Licensed and
insured. Dennis Ferrell, 426-4066.
x7

BID AUCTION—On Saturday,
May 10, Scout Troop 425 will
hold a sealed bid auction of the
following items: 5 tents, 3 canoes,
and 9 paddles. Time is between
10 a.m. and 4 p.m. with items on
display at the former Buick ga-
rage, N. Main St., Chelsea that
day. x46

FOR SALE—Corn crib, \$20. (Also
makes good kids' club house).
Phone 475-2382. x46

WANT ADS

NOW

Full Time

Complete

Body Shop

Service

Stop In For An Estimate

PALMER FORD

222 S. Main St.

475-1301 27tf

PIANO TUNING, Chelsea and area.
Facilities for reconditioning and
rebuilding. Used piano sales; re-
conditioned grands and verticals.
E. Ecklund, 426-4429. x50tf

EVINGER REAL ESTATE, Alpine
St., Dexter. Phone 426-8518. x18tf

SEE US for transit mixed con-
crete. Klumpp Bros. Gravel Co.
Phone Chelsea 475-2530, 4920 Love-
land Rd., Grass Lake, Mich. x40tf

TRAVEL TRAILERS—13-ft. and
up; 10x55 ft. trailers. John R.
Jones Trailer Sales, Gregory, Mich.
Phone 498-2855. x43tf

ELECTRICAL WIRING of all
types New and rewiring. Ph.
426-4555. x20tf

FOR RENT—American Legion
Hall. \$50. Call 475-1824. x40tf

Farmers - Homeowners

Campers

Here is low-cost blackout

protection.

End your power failure worries
now!

Tractor-driven or air-cooled elec-
tric alternators to meet your re-
quirements.

Take electric power with you.
We have Pinco Power Plants to
fit your needs.

Call

Heller Electric

Evenings at 475-7978 35tf

GARDENS PLOWED and worked.
Lawns seeded and mowed. Ph.
475-8372. x46

WILLIAMSON HEATING and Cool-
ing, sheet metal work. Licensed
and insured. Steele & Son, (313)
475-2022 or (517) 596-2951. x42tf

REGISTERED AQHA yearling
filly. Gentle, great for 4-H and
show prospect. Terms available.
(313) 878-3539 or 878-3833. x46

FOR SALE—French horn. King,
excellent condition, one owner.
Ph. 475-9429. x47

FREE PUPPIES—German Shep-
herd-Collie and Blue Tick mix-
ture. Phone 475-7684. x46

WESTERN SHOP

AUCTION

SADDLES - BOOTS

HORSE SUPPLIES - PONY

Having closed my Western Shop,
I will sell the following at public
auction at 12005 Scio Church Rd.,
Chelsea, Lake Old US-12 to Parker
Rd., then south to Scio Church Rd.,
then 4 1/2 miles west or 3 miles east
of M-52.

Sunday, May 4
at 1:00 p.m.

2 triple end full-size western show
saddles with leather padded seat
and double rigging, 1 with stitched
rough out seat, 2 fancy pony west-
ern show saddles with leather pad-
ded seat, 1 with stitched rough out
seat, 2 used roping saddles with
hand tooling, used rough out sad-
dle with double rigging and stitched
padded seat, 4 beautiful nylon lined
horse blankets, 6 canvas water-
proof lined horse blankets, horse
sweat sheets (Stallion brand), sad-
dle pads, saddle blankets, quantity
of bits, spurs, saddle bags, reins,
tie downs, chin straps, riding whips,
bridles, head stalls, pony bridles,
leather, nylon and rope halters (all
sizes and colors), rope cow show
halters, breast collars, veterinary
supplies, electric clippers, leg
wraps, curry combs, shampoos,
vitamins, feed additives, leather
cleaners.

Quantity of Durango, Tony Lama,
Acme & Justin western style dress
and work boots, Wrangler moccas-
ins, 40-42 size hand tooling leather
purses and wallets, leather and
suede shoulder bags, Jo-O-Kay blue
leather men's and women's leather
western jackets, brown leather
fringe jackets, fleece lined men's
leather jackets and vests, western
shirts and blouses (men, women,
children), quantity of Lee jeans, 100
beautiful hand-tooled western belts
and buckles, felt and straw hats,
1 pony green broke, pony no round,
Yamaha 125 motorcycle, Ford en-
gine and transmission 1969 - 351,
Ford drag, old corn sheller, 1970
Ski Roulé 440 snowmobile, old li-
cense plates, 2 bucket seats.

Many More Items Not Listed!

Sande's Texas Tack
SANDRA BRODERICK, Owner

Braun & Helmer Auction Services
Lloyd R. Braun, Ann Arbor
665-9646

Jerry L. Helmer, Plymouth
453-4109

Inspection day of sale,
Terms: Cash or check.

Nothing removed until settled for.

Not responsible for accidents.
Lunch on grounds.

GARAGE SALE—Sat., May 3,
afternoon, 801 W. Middle, Chel-
sea. x46

FOR RENT—1-bedroom apt. Se-
curity deposit and references.
Ph. 475-2585. x46

WANT ADS

SEAMLESS ALUMINUM eaves-
troughs, roofing, siding, and
carpentry work of all kinds. Ex-
perienced installers. All work
guaranteed. For free estimate,
call R. D. Kleinschmidt Co., 428-
8656. x31tf

FOR SALE—3-bedroom ranch.
\$29,000. Ph. 426-8538. x47

LECTHINI Vinegar! B61 Kelp!
Now all four in one capsule,
ask for VB6+, Chelsea Pharmacy. x49

KETO USED CARS
8020 GRAND - DEXTER
426-4535

CARS BOUGHT AND SOLD
GARDEN PLOWING—East Chel-
sea area. Ph. 475-2750. x46

A fine selection of
New and Used Cars

for immediate delivery

Harper Pontiac
Sales & Service

475-1306
Evenings, 475-1808

CUSTOM
BUILDING

LICENSED & INSURED

FREE ESTIMATES

TOTAL
CONSTRUCTION
SERVICES

—Residential, commercial and
industrial

—Garages

—Remodeling - Additions

—Aluminum Siding

—Roofing

—Trenching

SLOCUM
CONTRACTORS
& BUILDERS

Serving Washenaw County
For Over 20 years

20700 OLD US-12
CHELSEA

Phone 475-8321 or 475-7611 22tf

VACUUM CLEANERS

Authorized Electrolux
sales and service.

James Cox
428-2931, or 428-8686

118 Riverside Dr., Manchester 48tf

MUNITH AUCTION—100 Main St.,
Munith, Mich. Auction every
Sunday, 6 p.m. Danny Fleming
auctioneer. x12tf

STOCKBRIDGE, 13 acres, commer-
cial, on M-52. (517) 851-8141 35tf

D&G Allen Excavating

Septic Tanks and Drainfields
Back Hoe and Dozing

Sand, Gravel and Topsoil Hauled
Phone (517) 851-8386

or (517) 851-8278

FOR RENT—Small house for rent.
Two or three working men, or
an elderly couple. Ph. 475-7958. x45tf

WANTED—Gift wrap and wall-
paper remnants. Good condition.
475-8896. x46

BRICK MASON—Brick work,
block work, fireplaces, chimney
repairs, homes and additions. Ph.
475-2584. x44tf

BOB'S LOCK & KEY
Complete Locksmithing Service
Commercial, Residential,
Automotive

Luggage locks repaired.
475-9071 -41tf

A & K MOWER SERVICE—All
types of small motor repair.
Chain saws, rider mowers, rotary
mowers. Free pick-up and de-
livery. Ph. 475-2923. x20

Lawn & Garden
FERTILIZER

50-lb. bag \$6.00

McCALLA
FEED SERVICE

WANTED—Responsible child care
needed for 2 small boys. Must
have experience and own transpor-
tation. 3 evenings a week and some
afternoons. Please mail qualifica-
tions to 1525 S. Fletcher Rd., Chel-
sea. x46

FOR RENT—1-bedroom apt. Se-
curity deposit and references.
Ph. 475-2585. x46

WANT ADS

HOUSE WANTED TO BUY—Pre-

ferably 4-bedroom in or near

Chelsea. Ph. 475-1781. 41tf

NEED A ROOF? Call Toth Build-

ing & Remodeling, (313) 498-

2178. 41tf

Automotive

Rust Proofing

Cars and Trucks

Village

Motor Sales, Inc.

IMPERIAL - CHRYSLER

DODGE - PLYMOUTH

Phone 475-8661

1185 Manchester Rd., Chelsea

Hours: 8 a.m. to 6 p.m.

Tues. thru Fri. Until 9 Monday.

9 a.m. to 1 p.m. Saturday 21tf

SECURITY

GUARDS

Chelsea, Manchester
Whitmore Lake areas.

Phone 761-5315
for appointment,
or apply at
290 S. Wagner Rd.
Ann Arbor

SANFORD SECURITY SERVICE,
INC. x45tf

Legals

MORTGAGE SALE—Default having been made in the terms and conditions of a certain mortgage made by JACK D. WEST, JR. and PATRICIA J. WEST, his wife, to the NATIONAL MORTGAGE INVESTMENT CORPORATION, an Illinois corporation, dated the 15th day of January, 1974, and recorded in the Register of Deeds for the County of Washtenaw and State of Michigan, on page 338, which said mortgage was thereafter assigned to the FIRST FIDELITY SAVINGS AND LOAN ASSOCIATION, a United States corporation of Detroit, Michigan, by assignment dated January 15, 1974, and recorded on February 5, 1974, in the office of the Register of Deeds for the County of Washtenaw and State of Michigan, in Liber 1314, Page 216, and recorded in the office of the Register of Deeds for the County of Washtenaw and State of Michigan, on page 64, which said mortgage was thereafter assigned to the FIRST FIDELITY SAVINGS AND LOAN ASSOCIATION, a United States corporation of Detroit, Michigan, by assignment dated July 1, 1974, and recorded on July 1, 1974, in the office of the Register of Deeds for the County of Washtenaw and State of Michigan, on page 64, which said mortgage is hereby foreclosed by the undersigned, necessary to protect its interest in the premises, which said premises are described as follows: A certain piece of land situated in the City of Ypsilanti in the County of Washtenaw and State of Michigan, and described as follows: Lot 65, West Willow-Unit Nine, a subdivision of the west half of Section 8, Township 34 North, Range 6 East, Ypsilanti Township, Washtenaw County, Michigan, according to the plat thereof as recorded in Liber 18 of Plats, page 33, Washtenaw County Records.

During the six months immediately following the sale, the property may be redeemed.

Dated: April 15, 1975.
GIBRALTAR SAVING AND LOAN ASSOCIATION, Assignee of Mortgage.
2000 Guardian Bldg.
Detroit, Michigan 48226.
April 24-May, 1-8-15-22

MORTGAGE SALE—Default having been made in the conditions of a mortgage made by George M. Adams and Beth Adams, his wife, to Wayne Federal Savings and Loan Association, Mortgagee, dated April 10, 1972, and recorded in the Register of Deeds for the County of Washtenaw and State of Michigan, on page 844, which said mortgage was assigned to the FIRST FIDELITY SAVINGS AND LOAN ASSOCIATION, a United States corporation of Detroit, Michigan, by assignment dated October 10, 1972, and recorded on October 16, 1972, in the office of the Register of Deeds for the County of Washtenaw and State of Michigan, on page 1314, which said mortgage is hereby foreclosed by the undersigned, necessary to protect its interest in the premises, which said premises are described as follows: A certain piece of land situated in the Township of Ypsilanti, Washtenaw County, Michigan, and described as follows: Lot 345 and 346, Stevens Recreation Park, a subdivision of the east half of Section 8, Township 34 North, Range 6 East, Ypsilanti Township, Washtenaw County, Michigan, according to the plat thereof as recorded in Liber 5 of Plats, page 35, Washtenaw County Records.

During the six months immediately following the sale, the property may be redeemed.

Dated: April 10, 1975.
GIBRALTAR SAVING AND LOAN ASSOCIATION, Assignee of Mortgage.
2000 Guardian Bldg.
Detroit, Michigan 48226.
April 24-May, 1-8-15-22

MORTGAGE SALE—Default having been made in the conditions of a mortgage made by George M. Adams and Beth Adams, his wife, to Wayne Federal Savings and Loan Association, Mortgagee, dated April 10, 1972, and recorded in the Register of Deeds for the County of Washtenaw and State of Michigan, on page 844, which said mortgage was assigned to the FIRST FIDELITY SAVINGS AND LOAN ASSOCIATION, a United States corporation of Detroit, Michigan, by assignment dated October 10, 1972, and recorded on October 16, 1972, in the office of the Register of Deeds for the County of Washtenaw and State of Michigan, on page 1314, which said mortgage is hereby foreclosed by the undersigned, necessary to protect its interest in the premises, which said premises are described as follows: A certain piece of land situated in the Township of Ypsilanti, Washtenaw County, Michigan, and described as follows: Lot 345 and 346, Stevens Recreation Park, a subdivision of the east half of Section 8, Township 34 North, Range 6 East, Ypsilanti Township, Washtenaw County, Michigan, according to the plat thereof as recorded in Liber 5 of Plats, page 35, Washtenaw County Records.

During the six months immediately following the sale, the property may be redeemed.

Dated: April 10, 1975.
GIBRALTAR SAVING AND LOAN ASSOCIATION, Assignee of Mortgage.
2000 Guardian Bldg.
Detroit, Michigan 48226.
April 24-May, 1-8-15-22

MORTGAGE SALE—Default having been made in the conditions of a mortgage made by George M. Adams and Beth Adams, his wife, to Wayne Federal Savings and Loan Association, Mortgagee, dated April 10, 1972, and recorded in the Register of Deeds for the County of Washtenaw and State of Michigan, on page 844, which said mortgage was assigned to the FIRST FIDELITY SAVINGS AND LOAN ASSOCIATION, a United States corporation of Detroit, Michigan, by assignment dated October 10, 1972, and recorded on October 16, 1972, in the office of the Register of Deeds for the County of Washtenaw and State of Michigan, on page 1314, which said mortgage is hereby foreclosed by the undersigned, necessary to protect its interest in the premises, which said premises are described as follows: A certain piece of land situated in the Township of Ypsilanti, Washtenaw County, Michigan, and described as follows: Lot 345 and 346, Stevens Recreation Park, a subdivision of the east half of Section 8, Township 34 North, Range 6 East, Ypsilanti Township, Washtenaw County, Michigan, according to the plat thereof as recorded in Liber 5 of Plats, page 35, Washtenaw County Records.

During the six months immediately following the sale, the property may be redeemed.

Dated: April 10, 1975.
GIBRALTAR SAVING AND LOAN ASSOCIATION, Assignee of Mortgage.
2000 Guardian Bldg.
Detroit, Michigan 48226.
April 24-May, 1-8-15-22

MORTGAGE SALE—Default having been made in the conditions of a mortgage made by George M. Adams and Beth Adams, his wife, to Wayne Federal Savings and Loan Association, Mortgagee, dated April 10, 1972, and recorded in the Register of Deeds for the County of Washtenaw and State of Michigan, on page 844, which said mortgage was assigned to the FIRST FIDELITY SAVINGS AND LOAN ASSOCIATION, a United States corporation of Detroit, Michigan, by assignment dated October 10, 1972, and recorded on October 16, 1972, in the office of the Register of Deeds for the County of Washtenaw and State of Michigan, on page 1314, which said mortgage is hereby foreclosed by the undersigned, necessary to protect its interest in the premises, which said premises are described as follows: A certain piece of land situated in the Township of Ypsilanti, Washtenaw County, Michigan, and described as follows: Lot 345 and 346, Stevens Recreation Park, a subdivision of the east half of Section 8, Township 34 North, Range 6 East, Ypsilanti Township, Washtenaw County, Michigan, according to the plat thereof as recorded in Liber 5 of Plats, page 35, Washtenaw County Records.

During the six months immediately following the sale, the property may be redeemed.

Dated: April 10, 1975.
GIBRALTAR SAVING AND LOAN ASSOCIATION, Assignee of Mortgage.
2000 Guardian Bldg.
Detroit, Michigan 48226.
April 24-May, 1-8-15-22

MORTGAGE SALE—Default having been made in the conditions of a mortgage made by George M. Adams and Beth Adams, his wife, to Wayne Federal Savings and Loan Association, Mortgagee, dated April 10, 1972, and recorded in the Register of Deeds for the County of Washtenaw and State of Michigan, on page 844, which said mortgage was assigned to the FIRST FIDELITY SAVINGS AND LOAN ASSOCIATION, a United States corporation of Detroit, Michigan, by assignment dated October 10, 1972, and recorded on October 16, 1972, in the office of the Register of Deeds for the County of Washtenaw and State of Michigan, on page 1314, which said mortgage is hereby foreclosed by the undersigned, necessary to protect its interest in the premises, which said premises are described as follows: A certain piece of land situated in the Township of Ypsilanti, Washtenaw County, Michigan, and described as follows: Lot 345 and 346, Stevens Recreation Park, a subdivision of the east half of Section 8, Township 34 North, Range 6 East, Ypsilanti Township, Washtenaw County, Michigan, according to the plat thereof as recorded in Liber 5 of Plats, page 35, Washtenaw County Records.

During the six months immediately following the sale, the property may be redeemed.

Dated: April 10, 1975.
GIBRALTAR SAVING AND LOAN ASSOCIATION, Assignee of Mortgage.
2000 Guardian Bldg.
Detroit, Michigan 48226.
April 24-May, 1-8-15-22

MORTGAGE SALE—Default having been made in the conditions of a mortgage made by George M. Adams and Beth Adams, his wife, to Wayne Federal Savings and Loan Association, Mortgagee, dated April 10, 1972, and recorded in the Register of Deeds for the County of Washtenaw and State of Michigan, on page 844, which said mortgage was assigned to the FIRST FIDELITY SAVINGS AND LOAN ASSOCIATION, a United States corporation of Detroit, Michigan, by assignment dated October 10, 1972, and recorded on October 16, 1972, in the office of the Register of Deeds for the County of Washtenaw and State of Michigan, on page 1314, which said mortgage is hereby foreclosed by the undersigned, necessary to protect its interest in the premises, which said premises are described as follows: A certain piece of land situated in the Township of Ypsilanti, Washtenaw County, Michigan, and described as follows: Lot 345 and 346, Stevens Recreation Park, a subdivision of the east half of Section 8, Township 34 North, Range 6 East, Ypsilanti Township, Washtenaw County, Michigan, according to the plat thereof as recorded in Liber 5 of Plats, page 35, Washtenaw County Records.

During the six months immediately following the sale, the property may be redeemed.

Dated: April 10, 1975.
GIBRALTAR SAVING AND LOAN ASSOCIATION, Assignee of Mortgage.
2000 Guardian Bldg.
Detroit, Michigan 48226.
April 24-May, 1-8-15-22

MORTGAGE SALE—Default having been made in the conditions of a mortgage made by George M. Adams and Beth Adams, his wife, to Wayne Federal Savings and Loan Association, Mortgagee, dated April 10, 1972, and recorded in the Register of Deeds for the County of Washtenaw and State of Michigan, on page 844, which said mortgage was assigned to the FIRST FIDELITY SAVINGS AND LOAN ASSOCIATION, a United States corporation of Detroit, Michigan, by assignment dated October 10, 1972, and recorded on October 16, 1972, in the office of the Register of Deeds for the County of Washtenaw and State of Michigan, on page 1314, which said mortgage is hereby foreclosed by the undersigned, necessary to protect its interest in the premises, which said premises are described as follows: A certain piece of land situated in the Township of Ypsilanti, Washtenaw County, Michigan, and described as follows: Lot 345 and 346, Stevens Recreation Park, a subdivision of the east half of Section 8, Township 34 North, Range 6 East, Ypsilanti Township, Washtenaw County, Michigan, according to the plat thereof as recorded in Liber 5 of Plats, page 35, Washtenaw County Records.

During the six months immediately following the sale, the property may be redeemed.

Dated: April 10, 1975.
GIBRALTAR SAVING AND LOAN ASSOCIATION, Assignee of Mortgage.
2000 Guardian Bldg.
Detroit, Michigan 48226.
April 24-May, 1-8-15-22

MORTGAGE SALE—Default having been made in the conditions of a mortgage made by George M. Adams and Beth Adams, his wife, to Wayne Federal Savings and Loan Association, Mortgagee, dated April 10, 1972, and recorded in the Register of Deeds for the County of Washtenaw and State of Michigan, on page 844, which said mortgage was assigned to the FIRST FIDELITY SAVINGS AND LOAN ASSOCIATION, a United States corporation of Detroit, Michigan, by assignment dated October 10, 1972, and recorded on October 16, 1972, in the office of the Register of Deeds for the County of Washtenaw and State of Michigan, on page 1314, which said mortgage is hereby foreclosed by the undersigned, necessary to protect its interest in the premises, which said premises are described as follows: A certain piece of land situated in the Township of Ypsilanti, Washtenaw County, Michigan, and described as follows: Lot 345 and 346, Stevens Recreation Park, a subdivision of the east half of Section 8, Township 34 North, Range 6 East, Ypsilanti Township, Washtenaw County, Michigan, according to the plat thereof as recorded in Liber 5 of Plats, page 35, Washtenaw County Records.

MORTGAGE SALE—Default having been made in the conditions of a mortgage made by George M. Adams and Beth Adams, his wife, to Wayne Federal Savings and Loan Association, Mortgagee, dated April 10, 1972, and recorded in the Register of Deeds for the County of Washtenaw and State of Michigan, on page 844, which said mortgage was assigned to the FIRST FIDELITY SAVINGS AND LOAN ASSOCIATION, a United States corporation of Detroit, Michigan, by assignment dated October 10, 1972, and recorded on October 16, 1972, in the office of the Register of Deeds for the County of Washtenaw and State of Michigan, on page 1314, which said mortgage is hereby foreclosed by the undersigned, necessary to protect its interest in the premises, which said premises are described as follows: A certain piece of land situated in the Township of Ypsilanti, Washtenaw County, Michigan, and described as follows: Lot 345 and 346, Stevens Recreation Park, a subdivision of the east half of Section 8, Township 34 North, Range 6 East, Ypsilanti Township, Washtenaw County, Michigan, according to the plat thereof as recorded in Liber 5 of Plats, page 35, Washtenaw County Records.

During the six months immediately following the sale, the property may be redeemed.

Dated: April 10, 1975.
GIBRALTAR SAVING AND LOAN ASSOCIATION, Assignee of Mortgage.
2000 Guardian Bldg.
Detroit, Michigan 48226.
April 24-May, 1-8-15-22

MORTGAGE SALE—Default having been made in the conditions of a mortgage made by George M. Adams and Beth Adams, his wife, to Wayne Federal Savings and Loan Association, Mortgagee, dated April 10, 1972, and recorded in the Register of Deeds for the County of Washtenaw and State of Michigan, on page 844, which said mortgage was assigned to the FIRST FIDELITY SAVINGS AND LOAN ASSOCIATION, a United States corporation of Detroit, Michigan, by assignment dated October 10, 1972, and recorded on October 16, 1972, in the office of the Register of Deeds for the County of Washtenaw and State of Michigan, on page 1314, which said mortgage is hereby foreclosed by the undersigned, necessary to protect its interest in the premises, which said premises are described as follows: A certain piece of land situated in the Township of Ypsilanti, Washtenaw County, Michigan, and described as follows: Lot 345 and 346, Stevens Recreation Park, a subdivision of the east half of Section 8, Township 34 North, Range 6 East, Ypsilanti Township, Washtenaw County, Michigan, according to the plat thereof as recorded in Liber 5 of Plats, page 35, Washtenaw County Records.

During the six months immediately following the sale, the property may be redeemed.

Dated: April 10, 1975.
GIBRALTAR SAVING AND LOAN ASSOCIATION, Assignee of Mortgage.
2000 Guardian Bldg.
Detroit, Michigan 48226.
April 24-May, 1-8-15-22

MORTGAGE SALE—Default having been made in the conditions of a mortgage made by George M. Adams and Beth Adams, his wife, to Wayne Federal Savings and Loan Association, Mortgagee, dated April 10, 1972, and recorded in the Register of Deeds for the County of Washtenaw and State of Michigan, on page 844, which said mortgage was assigned to the FIRST FIDELITY SAVINGS AND LOAN ASSOCIATION, a United States corporation of Detroit, Michigan, by assignment dated October 10, 1972, and recorded on October 16, 1972, in the office of the Register of Deeds for the County of Washtenaw and State of Michigan, on page 1314, which said mortgage is hereby foreclosed by the undersigned, necessary to protect its interest in the premises, which said premises are described as follows: A certain piece of land situated in the Township of Ypsilanti, Washtenaw County, Michigan, and described as follows: Lot 345 and 346, Stevens Recreation Park, a subdivision of the east half of Section 8, Township 34 North, Range 6 East, Ypsilanti Township, Washtenaw County, Michigan, according to the plat thereof as recorded in Liber 5 of Plats, page 35, Washtenaw County Records.

During the six months immediately following the sale, the property may be redeemed.

Dated: April 10, 1975.
GIBRALTAR SAVING AND LOAN ASSOCIATION, Assignee of Mortgage.
2000 Guardian Bldg.
Detroit, Michigan 48226.
April 24-May, 1-8-15-22

MORTGAGE SALE—Default having been made in the conditions of a mortgage made by George M. Adams and Beth Adams, his wife, to Wayne Federal Savings and Loan Association, Mortgagee, dated April 10, 1972, and recorded in the Register of Deeds for the County of Washtenaw and State of Michigan, on page 844, which said mortgage was assigned to the FIRST FIDELITY SAVINGS AND LOAN ASSOCIATION, a United States corporation of Detroit, Michigan, by assignment dated October 10, 1972, and recorded on October 16, 1972, in the office of the Register of Deeds for the County of Washtenaw and State of Michigan, on page 1314, which said mortgage is hereby foreclosed by the undersigned, necessary to protect its interest in the premises, which said premises are described as follows: A certain piece of land situated in the Township of Ypsilanti, Washtenaw County, Michigan, and described as follows: Lot 345 and 346, Stevens Recreation Park, a subdivision of the east half of Section 8, Township 34 North, Range 6 East, Ypsilanti Township, Washtenaw County, Michigan, according to the plat thereof as recorded in Liber 5 of Plats, page 35, Washtenaw County Records.

During the six months immediately following the sale, the property may be redeemed.

Dated: April 10, 1975.
GIBRALTAR SAVING AND LOAN ASSOCIATION, Assignee of Mortgage.
2000 Guardian Bldg.
Detroit, Michigan 48226.
April 24-May, 1-8-15-22

MORTGAGE SALE—Default having been made in the conditions of a mortgage made by George M. Adams and Beth Adams, his wife, to Wayne Federal Savings and Loan Association, Mortgagee, dated April 10, 1972, and recorded in the Register of Deeds for the County of Washtenaw and State of Michigan, on page 844, which said mortgage was assigned to the FIRST FIDELITY SAVINGS AND LOAN ASSOCIATION, a United States corporation of Detroit, Michigan, by assignment dated October 10, 1972, and recorded on October 16, 1972, in the office of the Register of Deeds for the County of Washtenaw and State of Michigan, on page 1314, which said mortgage is hereby foreclosed by the undersigned, necessary to protect its interest in the premises, which said premises are described as follows: A certain piece of land situated in the Township of Ypsilanti, Washtenaw County, Michigan, and described as follows: Lot 345 and 346, Stevens Recreation Park, a subdivision of the east half of Section 8, Township 34 North, Range 6 East, Ypsilanti Township, Washtenaw County, Michigan, according to the plat thereof as recorded in Liber 5 of Plats, page 35, Washtenaw County Records.

During the six months immediately following the sale, the property may be redeemed.

Dated: April 10, 1975.
GIBRALTAR SAVING AND LOAN ASSOCIATION, Assignee of Mortgage.
2000 Guardian Bldg.
Detroit, Michigan 48226.
April 24-May, 1-8-15-22

MORTGAGE SALE—Default having been made in the conditions of a mortgage made by George M. Adams and Beth Adams, his wife, to Wayne Federal Savings and Loan Association, Mortgagee, dated April 10, 1972, and recorded in the Register of Deeds for the County of Washtenaw and State of Michigan, on page 844, which said mortgage was assigned to the FIRST FIDELITY SAVINGS AND LOAN ASSOCIATION, a United States corporation of Detroit, Michigan, by assignment dated October 10, 1972, and recorded on October 16, 1972, in the office of the Register of Deeds for the County of Washtenaw and State of Michigan, on page 1314, which said mortgage is hereby foreclosed by the undersigned, necessary to protect its interest in the premises, which said premises are described as follows: A certain piece of land situated in the Township of Ypsilanti, Washtenaw County, Michigan, and described as follows: Lot 345 and 346, Stevens Recreation Park, a subdivision of the east half of Section 8, Township 34 North, Range 6 East, Ypsilanti Township, Washtenaw County, Michigan, according to the plat thereof as recorded in Liber 5 of Plats, page 35, Washtenaw County Records.

During the six months immediately following the sale, the property may be redeemed.

Dated: April 10, 1975.
GIBRALTAR SAVING AND LOAN ASSOCIATION, Assignee of Mortgage.
2000 Guardian Bldg.
Detroit, Michigan 48226.
April 24-May, 1-8-15-22

MORTGAGE SALE—Default having been made in the conditions of a mortgage made by George M. Adams and Beth Adams, his wife, to Wayne Federal Savings and Loan Association, Mortgagee, dated April 10, 1972, and recorded in the Register of Deeds for the County of Washtenaw and State of Michigan, on page 844, which said mortgage was assigned to the FIRST FIDELITY SAVINGS AND LOAN ASSOCIATION, a United States corporation of Detroit, Michigan, by assignment dated October 10, 1972, and recorded on October 16, 1972, in the office of the Register of Deeds for the County of Washtenaw and State of Michigan, on page 1314, which said mortgage is hereby foreclosed by the undersigned, necessary to protect its interest in the premises, which said premises are described as follows: A certain piece of land situated in the Township of Ypsilanti, Washtenaw County, Michigan, and described as follows: Lot 345 and 346, Stevens Recreation Park, a subdivision of the east half of Section 8, Township 34 North, Range 6 East, Ypsilanti Township, Washtenaw County, Michigan, according to the plat thereof as recorded in Liber 5 of Plats, page 35, Washtenaw County Records.

During the six months immediately following the sale, the property may be redeemed.

Dated: April 10, 1975.
GIBRALTAR SAVING AND LOAN ASSOCIATION, Assignee of Mortgage.
2000 Guardian Bldg.
Detroit, Michigan 48226.
April 24-May, 1-8-15-22

MORTGAGE SALE—Default having been made in the conditions of a mortgage made by George M. Adams and Beth Adams, his wife, to Wayne Federal Savings and Loan Association, Mortgagee, dated April 10, 1972, and recorded in the Register of Deeds for the County of Washtenaw and State of Michigan, on page 844, which said mortgage was assigned to the FIRST FIDELITY SAVINGS AND LOAN ASSOCIATION, a United States corporation of Detroit, Michigan, by assignment dated October 10, 1972, and recorded on October 16, 1972, in the office of the Register of Deeds for the County of Washtenaw and State of Michigan, on page 1314, which said mortgage is hereby foreclosed by the undersigned, necessary to protect its interest in the premises, which said premises are described as follows: A certain piece of land situated in the Township of Ypsilanti, Washtenaw County, Michigan, and described as follows: Lot 345 and 346, Stevens Recreation Park, a subdivision of the east half of Section 8, Township 34 North, Range 6 East, Ypsilanti Township, Washtenaw County, Michigan, according to the plat thereof as recorded in Liber 5 of Plats, page 35, Washtenaw County Records.

During the six months immediately following the sale, the property may be redeemed.

Dated: April 10, 1975.
GIBRALTAR SAVING AND LOAN ASSOCIATION, Assignee of Mortgage.
2000 Guardian Bldg.
Detroit, Michigan 48226.
April 24-May, 1-8-15-22

MORTGAGE SALE—Default having been made in the conditions of a mortgage made by George M. Adams and Beth Adams, his wife, to Wayne Federal Savings and Loan Association, Mortgagee, dated April 10, 1972, and recorded in the Register of Deeds for the County of Washtenaw and State of Michigan, on page 844, which said mortgage was assigned to the FIRST FIDELITY SAVINGS AND LOAN ASSOCIATION, a United States corporation of Detroit, Michigan, by assignment dated October 10, 1972, and recorded on October 16, 1972, in the office of the Register of Deeds for the County of Washtenaw and State of Michigan, on page 1314, which said mortgage is hereby foreclosed by the undersigned, necessary to protect its interest in the premises, which said premises are described as follows: A certain piece of land situated in the Township of Ypsilanti, Washtenaw County, Michigan, and described as follows: Lot 345 and 346, Stevens Recreation Park, a subdivision of the east half of Section 8, Township 34 North, Range 6 East, Ypsilanti Township, Washtenaw County, Michigan, according to the plat thereof as recorded in Liber 5 of Plats, page 35, Washtenaw County Records.

During the six months immediately following the sale, the property may be redeemed.

Dated: April 10, 1975.
GIBRALTAR SAVING AND LOAN ASSOCIATION, Assignee of Mortgage.
2000 Guardian Bldg.
Detroit, Michigan 48226.
April 24-May, 1-8-15-22

MORTGAGE SALE—Default having been made in the conditions of a mortgage made by George M. Adams and Beth Adams, his wife, to Wayne Federal Savings and Loan Association, Mortgagee, dated April 10, 1972, and recorded in the Register of Deeds for the County of Washtenaw and State of Michigan, on page 844, which said mortgage was assigned to the FIRST FIDELITY SAVINGS AND LOAN ASSOCIATION, a United States corporation of Detroit, Michigan, by assignment dated October 10, 1972, and recorded on October 16, 1972, in the office of the Register of Deeds for the County of Washtenaw and State of Michigan, on page 1314, which said mortgage is hereby foreclosed by the undersigned, necessary to protect its interest in the premises, which said premises are described as follows: A certain piece of land situated in the Township of Ypsilanti, Washtenaw County, Michigan, and described as follows: Lot 345 and 346, Stevens Recreation Park, a subdivision of the east half of Section 8, Township 34 North, Range 6 East, Ypsilanti Township, Washtenaw County, Michigan, according to the plat thereof as recorded in Liber 5 of Plats, page 35, Washtenaw County Records.

During the six months immediately following the sale, the property may be redeemed.

Dated: April 10, 1975.
GIBRALTAR SAVING AND LOAN ASSOCIATION, Assignee of Mortgage.
2000 Guardian Bldg.
Detroit, Michigan 48226.
April 24-May, 1-8-15-22

County-Wide Walk-A-Thon Set To Benefit Local March of Dimes

"Help Prevent Birth Defects," by walking or sponsoring a walker in the third annual Washtenaw County Chapter of the March of Dimes Walk-A-Thon to be held this Sunday, May 4.

Walkers will meet at Huron High School in Ann Arbor at 9 a.m. Sunday and walk a 16-mile course.

What is a walk-a-thon? It is a course, in this case, 16 miles, with checkpoints. Each walker is sponsored by a parent, friend, neighbor, relative, small business, or any individual or group who cares to contribute in the fight against birth defects.

Walkers will pass through checkpoints along the route and have his or her route card stamped. When the walk is completed, the walker will show his card to his sponsor, who will then contribute money earned to the March of Dimes. Walkers may have more than one sponsor.

The walk is open to all interested persons. However, children under 12 years of age must be accompanied by an adult; those under 18 must have prior permission from a parent or guardian.

Sponsor sheets may be picked up from the following places: National Bank & Trust Co., of Ann Arbor, A. & W. Root Beer stands, Richardson's Pharmacy, National Bank & Trust of Ypsilanti, the Ann Arbor "Y" and the Junior and Senior high in Ann Arbor. Ypsilanti and outlying schools.

Huron High School in Ann Arbor, north on Huron Parkway, Hubbard to Broadway via Beakes to Main, down Miller to West Park for the first checkpoint. Continue down Miller to Bruce over to Dexter Rd., via Sunrise and Westwood down Grandview, over to Jackson for the second checkpoint. Continue on South down Liberty to Dartmouth, to Stadium via Ivywood, Lyndale, and Arbordale, down Stadium to Alhambra to Cic Church via Sue Parkway, Runnymede, Barrington, Dunmore and Winston and on to Pioneer for the third checkpoint. The walk then moves along Wells to Washtenaw via Fredon Oak Lane, and Ashshire to the Root Bridge, then across the Huron River via Heatherway and Geddes, and finally back to Huron High.

Celebrities marching in the Walk-A-Thon are Don Ganhnan, University of Michigan athletic department director; John Orr, head basketball coach; Jim Dutcher, Bill Freider, Rick Gar-

ter, all on the basketball coaching staff; and Dan Farrel, hockey coach.

Prizes will be awarded to the walker turning in the most amount of money, and the walker with the greatest number of sponsors. Many other prizes have been donated by local merchants and

businessmen. These will be awarded on a name drawn basis. All funds from the walk will go to the March of Dimes programs, in birth defect research, direct patient aid, pre-natal care, and public and professional education.

For further information call 761-6331.

water run-off is faster this year thanks to work crews clearing Washtenaw county drains.

Funded by CETA money through the County Drain Office, four seven-man crews are now clearing trees and brush with chainsaws and clippers from overgrown drains.

"Large trees, deadfalls and vines have slowed run-off along many of the natural and man-made drains for years," observes Washtenaw County Drain Commissioner Jerome K. Fulton.

"When CETA funds became available, we recognized a unique opportunity to restore the county's superior drainage by hiring crews to clear out the debris," Fulton says.

Crews may be spotted throughout the county working to clear the drains. The yellow safety helmets and men and women have waded into hip-deep, clogged streams to hack away at clinging brush and vines. Trees are cut down, sawed up and hauled out.

"When they finish, the water flow is dropped by as much as six inches," Fulton says.

"We are clearing the drains as residents petition us to do so, or as township governments request the work," Fulton explains. Drain restoration is currently being completed in Augusta and Lodi townships.

CETA is an acronym for Comprehensive Employment and Training Act a federally funded program for hiring county resi-

College Student Grants, Loans Hit \$31.5 Million

Lansing—Michigan college students received \$31.5 million in financial assistance during the 1973-74 school year under state-sponsored loan and grant programs, the State Board of Education announced, recently.

Grants totaling \$16 million were made under State Scholarship and Tuition Grant programs while state-guaranteed loans totaling \$15.5 million were approved during the year, the State Board said.

Consolidated Report of Condition of Chelsea State Bank

of Chelsea, Michigan 48118, at the close of business April 16, 1975, a state banking institution organized and operating under the banking laws of this State and a member of the Federal Reserve System. Published in accordance with a call made by the State Banking Authorities and by the Federal Reserve Bank of this District.

ASSETS

Cash and due from banks (including no unposted debits)	\$ 2,074,978.25
U. S. Treasury securities	5,369,053.47
Obligations of States and political subdivisions	4,547,873.24
Other securities (including \$48,000 corporate stocks)	66,350.00
Federal funds sold and securities purchased under agreements to resell	1,800,000.00
Other loans	15,442,790.17
Bank premises, furniture and fixtures, and other assets representing bank premises	288,321.04
Other assets (including no direct lease financing)	173,063.81
TOTAL ASSETS	\$29,782,430.98

LIABILITIES

Demand deposits of individuals, partnerships, and corporations	\$ 5,260,968.27
Time and savings deposits of individuals, partnerships, and corporations	18,332,740.98
Deposits of United States Government	138,070.74
Deposits of States and political subdivisions	2,226,179.37
Certified and officers' checks, etc.	193,044.40
TOTAL DEPOSITS	\$26,151,003.76
(a) Total demand deposits	6,456,262.78
(b) Total time and savings deposits	19,694,740.98
Other liabilities	481,999.84
TOTAL LIABILITIES	\$26,633,003.60

RESERVES ON LOANS AND SECURITIES

Reserve for bad debt losses on loans (set up pursuant to IRS rulings)	248,456.61
TOTAL RESERVES ON LOANS AND SECURITIES	\$ 248,456.61

CAPITAL ACCOUNTS

Equity Capital, total	\$ 2,900,970.77
Common stock-total par value	800,000.00
(No. shares authorized)	16,000
(No. shares outstanding)	16,000
Surplus	800,000.00
Undivided profits	1,200,970.77
Reserve for contingencies and other capital reserves	100,000.00
TOTAL CAPITAL ACCOUNTS	\$ 2,900,970

BOWLING NEWS

Chelsea Suburban

Standings as of April 23

Chelsea Drug	133	91
Dana Corp.	121	103
Chelsea State Bank	117	107
Floor Mobil	116	108
Ernstberger Realty	116	108
Danger's	115	110
Dairy Queen	112	112
State Farm	108	116
Mark IV Lounge	104	120
Cavanaugh Lk. Store	103	121
Chelsea Assoc. Build.	101	123
Waterloo Garage	98	126

150 games and over: N. Packard 223, 197, 172; A. Coppennoll, 160, 150, 171; L. Jarvis, 158; J. Baku, 155, 150; M. Inbody, 158, 161; K. Chapman, 160; G. De-Snyder, 152, 170; W. Hafner, 163; E. Beck, 173; E. Schulz, 163; M. Usher, 191, 171; C. Stoffer, 215, 158, 155; D. Hawley, 68; S. Bowen, 21, 163, 155; P. Harok, 161, 150; J. Stewart, 202; P. Elliott, 205, 71, 151; S. Ratstaff, 188; E. Miller, 158; J. Burnett, 187; N. Collins, 161, 183; F. Fredrick, 158, 158; T. Monroe, 181; M. Bollinger, 168; D. Keizer, 157; M. DeLa-Torre, 168; B. Hatley, 154; R. McGibney, 159, 177; F. Cole, 162, 180; K. Snyder, 174, 160; E. Figg, 159; A. Bohne, 158; J. Schulze, 156; L. Beeman, 164, 189; A. Wood, 155; A. Hocking, 184; G. Baczynski, 154; B. Robeson, 166; R. Rossbach, 160; N. Prater, 173; B. Smith, 171.

Tri-City Mixed League

Standings as of April 23

Jiffy Mixes	147	91
Craft Appliance Co.	147	91
Jerry & Doug's Quality	141	97
Real Estate One	135	103
E. P. Smith Pallet Co.	126	112
Stiver's	126	112
Chelsea Cleaners	123	115
Mel's Roofing	122	116
Portage Hardware	121	117
3-D Sales & Service	120	118
McEwan & Robinson	118	120
Sprague Buick & Olds	116	122
Fake Seven	109	129
Hoover's Hustlers	108	130
R. L. Bauer Builders	108	130
Chelsea Glass Works	93	145
Euler & Swersky	92	146
4-B's	90	148

500 series men: J. Baker, 605; K. Barksdale, 634; S. Cavender, 557; F. Cooper, 547; F. Craft, 520; P. Fletcher, 514; A. Fouty, 553; J. Hughes, 567; B. Kaiser, 558; R. Lentz, 518; B. Maier, 596; C. Robinson, 500; A. Sannes, 520; H. Swersky, 531; D. Westcott, 535; R. V. Worden, 507.

200 games men: J. Baker, 222; A. Fouty, 230; J. Hughes, 202, 205; B. Maier, 207; B. Maier, 216, 209; H. Swersky, 206.

450 series women: M. Ashmore, 460; B. Fike, 460; D. Hughes, 469; K. Lentz, 459; M. Maier, 464; B. Parish, 488; M. Westcott, 529.

150 games women: M. Ashmore, 171, 151; L. Behnke, 151, 153; N. Cavender, 159; G. Cooper, 157; E. Dettling, 170; G. Dettling, 158; B. Fike, 153, 174; K. Fletcher, 152, 165; D. Fouty, 162; A. Hocking, 181; D. Hughes, 194; J. Kaiser, 151; K. Lentz, 163, 157; M. Maier, 155, 165; B. Parish, 163, 161, 164; C. Peterson, 62; G. Ruchis, 159; M. Stafford, 158; C. Stoffer, 169; D. Swersky, 177; E. Tindall, 165; M. Westcott, 153, 178; D. Worden, 153.

MARK IV LOUNGE

PHONE 475-8141 CHELSEA

SPRING and SUMMER LEAGUES NOW FORMING

MEN - WOMEN
MIXED - JUNIORS
Call Now for
More Information

BOWLING BALLS, BAGS, SHOES
NOW IN STOCK.
CHELSEA LANES, Inc.
PHONE 475-8141

Junior House League

Standings as of April 24

Frank Grohs Chevy	150	81
Mark IV Lounge	140	91
Mac Tools	139	92
Chelsea Lanes	134	96
Wolverine No. 11	133	98
Dana Maintenance	126	105
Dana Demons	125	106
Jiffy Mix	118	113
Boyer Automotive	118	113
Delf's Paints	112	119
Smith's AAA	108	123
Trading Post	108	123
3-D Sales & Service	105 1/2	125 1/2
Doug's Painting	105	126
Rockwell International	104 1/2	126 1/2
Washtenaw Engineering	93	131
Ipsco	84	137
Slocum Const. & Build	69	162

600 series: P. Fletcher, 613; 525 or over: J. Harok, 587; N. Fahrner, 544; G. White, 528; A. Sannes, 544; T. Dittmar, 545; G. Beeman, 582; B. Smith, 533; D. Crosby, 543; A. Fleischmann, 545; A. Fletcher, Jr., 581; D. Allen, 544; E. Greenleaf, 568; D. White, 540; F. Northrop, 582; J. Norris, 535; G. Hamilton, 563; R. Nix, 533; J. Fortner, 538; D. Baku, 540; B. Ringe, 538; T. Karns, 581; K. Norris, 528; J. McAllister, 532; W. Brown, 546; R. Erskine, 549.

Rolling Pin League

Standings as of April 29

Egg Beaters	69	39
Coffee Cups	65	43
Moppy Uppers	79	49
Mixers	71 1/2	56 1/2
Spooners	70	58
Sugar Bowls	64 1/2	63 1/2
Blenders	64 1/2	63 1/2
Kitchen Kapers	59	69
Pots	59	69
Brooms	58	70
Dish Rags	57 1/2	70 1/2
Jolly Mops	54	74
Beaters	58	72
Poachers	53	78
Koobie Kutters	52 1/2	78 1/2
Grinders	51 1/2	79 1/2

425 and over series: D. Anderson, 428; P. Harok, 494; N. Hill, 432; N. Keizer, 472; P. Wurster, 446; D. Cook, 450; J. Shepherd, 483; J. Edick, 475; E. Williams, 402; P. Patterson, 424; D. Dirlam, 426; B. Marsh, 437; M. Meyers, 430; E. Kalbfleisch, 458; D. McAllister, 429; T. Doll, 431; G. Clark, 457.

150 and over games: E. Kalbfleisch, 156, 173; T. Jarvis, 158; G. Clark, 166; G. Klink, 161; B. Marsh, 178; C. Schultz, 161; M. Meyers, 151, 152; P. Borders, 155, 157; D. Dirlam, 188; E. Neibauer, 151; E. Reynolds, 151; P. Smith, 153, 154; W. Meranuck, 162; P. Patterson, 151; J. Shepherd, 158, 161, 164; J. Edick, 170, 84; M. Eeles, 65; E. Williams, 158, 186; N. Hill, 167; N. Keizer, 181, 150; P. Wurster, 155; D. Cook, 178; S. Bowen, 172; D. Anderson, 164; M. Vassas, 156, 160; P. Harok, 155, 163, 178; B. Torrice, 151; A. Rawson, 150; A. Hadley, 177; T. Doll, 158.

Bulldog Mixed League

Standings as of April 24

3-D Sales	81	47
Spadafore's Stores	76 1/2	51 1/2
Doug's Painting	72	56
Brown's Drugs	70	58
A & W	69	59
Dave Rowe Agency	68 1/2	59 1/2
Mac's Auto	68 1/2	59 1/2
Leftovers	66	62
Good Lucks	64 1/2	63 1/2
Marmadukes	63	65
Team No. 14	57 1/2	70 1/2
Stivers Bar	55 1/2	72 1/2
Team No. 6	44	84
Slocum Contr.	43	85

Men, high games and series: R. Nix, 199, 603; D. Kyle, 195.

Women, high games: L. Kyle, 217; D. Hawley, 174; J. Pagliarini, 161.

Senior House League

Final Standings

Washtenaw Crop Serv.	140	98
S. J. Custard Leather	139	99
Frank Grohs Chevy	133	105
Schneider's Grocery	130 1/2	107 1/2
Sarns, Inc.	127	111
Chelsea Lumber	127	111
Gambles	126	112
Mark IV Lounge	126	112
Self's Tavern	126	112
Dexter Automatics	125	113
Sylvan Center	125	113
Chelsea Grinding	121 1/2	118 1/2
Lloyd Bridges Chev.	114 1/2	123 1/2
Bauer Builders	107	131
Fair's Mobil	108 1/2	132 1/2
Village Motor Sales	85	146
Wal's Barber Shop	82	146
Ren's Arco	80	158

Chelsea Lanes Mixed

Final Standings

Gerry Rushing's	142	96
Bushwackers	139	99
Torrice & Rawson	134	104
Mark IV Lounge	134	104
Adamson & Henson	130	108
Hollinger's	127	111
Ann Arbor Centerless	126	112
Doug's Painting	125	113
Marsh & Verwey	124	114
The Hopefuls	123	115
Hook Line & Stinkers	119 1/2	118 1/2
Snoozers	117	121
Federal Screw Outlaws	110	128
Bagel & Silcox	109	129
Sak's Fifth Avenue	107	131
The Pinheads	107	131
Mort's Custom Shop	103	135
Willy & The We's	103 1/2	162 1/2

Chelsea Women's Bowling Club

Standings as of April 23

Wolverine Bar	82	46
Jiffy Mixes	79	49
Palmer Ford	77 1/2	50 1/2
Parish's Cleaners	75	53
Washtenaw Engineering	70	58
Mark IV Lounge	69 1/2	58 1/2
Chelsea Grinding	65 1/2	62 1/2
Thompson's Pizza	65	63
Rushing's Temp. Help	57 1/2	70 1/2
Glenn's Mobil	57	71
Larry's Roadside Mkt.	57	71
Lloyd Bridges	55	73
Joe & Judy's	52	76
Heydlauff's	51	77

450 series or over: M. McGuire, 529; J. Norris, 514; R. Hummel, 513; N. Kern, 459; A. Boham, 488; J. Rowe, 474; B. Fritz, 475; A. Sindlinger, 499; P. Fitzsimmons, 488; P. Poertner, 471; D. Verwey, 489; D. Judson, 478; I. Fouty, 483; T. Steinaway, 451; N. Rujia, 470; B. Bridges, 479; D. Eisenbeler, 492; D. Alber, 485; C. Bradbury, 474; E. Whitaker, 470; G. Kuhl, 483; L. Orlovski, 457; D. Fouty, 457.

150 games and over: M. McGuire, 179, 170, 180; J. Norris, 216, 165; R. Hummel, 203, 169; L. Stuewe, 174; S. Robards, 187; R. Whitaker, 180; N. Kern, 165, 159; T. Kenney, 167; D. Eisenbeler, 175; M. Eder, 154, 151; A. Boham, 192, 167; B. Bush, 150; A. Fahrner, 158; J. Rowe, 179, 155; N. Packard, 157; B. Fritz, 156, 170; A. Sindlinger, 166, 166, 167; J. Fahrner, 155, 165; P. Fitzsimmons, 173, 178; P. Poertner, 189; D. Rosenreiter, 151; D. Verwey, 183; D. Judson, 176, 167; I. Fouty, 161, 167, 155; T. Steinaway, 177; M. Powell, 158; C. Powell, 181; D. Norris, 163; K. McCalla, 184, 173; J. Cook, 157; N. Rujia, 153, 180; B. Bridges, 185; J. Alber, 153; D. Eisenbeler, 190, 163; L. Alex-

ander, 180; D. Alber, 180, 180, 181; G. Wireman, 184; C. Bradbury, 191; R. Luyovsky, 164; E. Whitaker, 190; S. Klink, 164; G. Kuhl, 168, 167; J. Panfil, 151; B. Fike, 167.

Charlie Brown & Snoopy's Friends Peanut League

Standings as of April 24

Super Strikers	43	25
Wild Cats	34	34
Super Stars	33	35
Snoopies	32 1/2	35 1/2
All Stars	31	37
Pin Crackers	30 1/2	37 1/2

Games 70 and over: K. Nadeau, 94, 102; C. Heaton, 86; C. Bowen, 92, 76; C. Connell, 78; E. Bristle, 72, 93; K. Fletcher, 79; R. Robeson, 110, 89; S. Cheever, 107; D. Waidlyke, 71; J. Morgan, 98; D. Seitz, 87; J. Owens, 97, 94; P. Rowe, 76; J. Brown, 71, 103; D. Dettling, 131, 116; J. Tobin, 89; J. Thomsen, 89; C. Schulze, 72; J. Packard, 74, 92; A. Fletcher, 119, 85; T. Greenleaf, 133, 105; R. Krichbaum, 96, 79.

Hi Point Mixed

Final Standing

New Breed	672
Dexter Gear & Spine	638
Heavy Traffic	622
River Rats	606
Hit & Missers	605
Trouble Shooters	603
Ding A Lings	600
Alley Runners	590
Flat Tires	587
4D's	557
Pres.	543
Faber Fabrics	527

Women, high games, 150 and over: M. Scott, 156; M. Inbody, 150, 161; G. DeSmith, 155; M. Paul, 183; L. Martincz, 150; S. Ward, 161; D. Oliver, 157, 173; V. Rowe, 163; W. Landwehr, 168; C. Behnke, 181, 173; P. Scherdt, 154, 166; V. Guenther, 174; C. Klapperech, 156, 180, 158.

Women, high series, 425 and over: C. Klapperech, 494; V. Guenther, 451; P. Scherdt, 456; W. Landwehr, 459; C. Behnke, 490; D. Oliver, 456; M. Paul, 435.

Men, high game, 180 and over: G. Inbody, 186; V. Teachworth, 169, 175; A. Hansen, 167, 168, 205; M. Fox, 166; F. Palacios, 171; M. Teed, 164; G. Cook, 197; T. Steers, 175; D. Carpenter, 192.

Men, high series, 450 and over: D. Carpenter, 474; G. Cook, 477; W. Teachworth, 465; A. Hansen, 540; O. Inbody, 496.

Charlie Brown and Snoopy's Friends Prep Division

Standings as of April 26

Striking Strikers	46	22
Super Stars	43	24
Pin Fighters	43	25
Bulldogs	39	29
Super Strikers	36	32
Thompson's Submarines	35	33
Bobbing Pins	31 1/2	38 1/2
Streakers	30 1/2	37 1/2
Pin Pushers	19	49
Chelsea Killers	16	52

Girls, games 100 and over: M. Petch, 130; M. Northrop, 129, 106; L. Davis, 125; T. Schulze, 117, 101; A. Alexander, 117; T. Alexander, 115, 113; C. Feeney, 115; M. Alexander, 113; L. Smith, 107; C. Fahrner, 105, 102; D. Dorer, 105; D. Thompson, 103; J. Verwey, 100.

Boys games 140 and over: T. Sweeney, 173; B. McAllister, 160; D. Eisele, 152; S. Rademacher, 147; D. Stock, 146.

Letsure Time League

Final Standings

Unpredictables	83 1/2	49 1/2
Crackpots	77	55
Slowpokes	75	57
Misfits	74 1/2	57 1/2
Lady Bugs	72 1/2	59 1/2
Four Stooges	66 1/2	65 1/2
Highly Hopefuls	63	69
Roadrunners	62	70
Rug Rats	56 1/2	75 1/2
The Lakers	56	76
Poon Bears	54	78
Sugar Loafers	51 1/2	80 1/2

140 games: J. Anderson, 143; C. Engler, 140; P. Muncer, 183; S. Thurkow, 140; L. Haller, 150; M. Dault, 145; D. Dault, 151, 155, 160; P. Sands, 156, 165, 146; D. Thompson, 166; Sharon Friday, 143; K. Haywood, 144, 158; V. Wheaton, 154, 162; C. Satterthwaite, 142, 142; G. Reed, 161; J. Scott, 158; G. Tallman, 191; 143; S. Nagel, 153; S. Centilli, 141, 177, 159; J. Doolin, 145, 160; E. Williams, 154, 142; M. O'Donnell, 146; M. Miller, 175, 171, 170; D. Hafner, 141, 185, 156; B. Mull, 142, 151; J. Smith, 145, 147; R. Musbach, 142, 153; E. Heller, 141; B. Robinson, 154, 183.

CHELSEA VILLAGE COUNCIL PROCEEDINGS

Regular Session. April 15, 1976

This meeting was called to order by President Pro-Tem Dmoch at 7:30 p.m.

Officials present: Clerk Neumeier and Administrator Weber. Trustees present: Wood, Rowe, Johnson, Dmoch and Horton. Absent: President Pennington and Trustee Galbraith.

Others present: Police Chief Meranuck, Zoning Inspector Galtra, Civil Defense Director Wade, Planning Commission representative Clark Bushnell, Richard Barels and Darryl West.

The minutes of the regular session of April 1, 1975 were read and approved.

Darryl West, State Wrestling Champion at 145 lbs., from Chelsea, was congratulated on a fine season and career and presented with a plaque containing a proclamation commending his performance.

A discussion was held regarding the recommendation by Police Chief Meranuck not to change the parking regulations on Book Street. No action was taken at this time.

A discussion was held regarding the possibility of limited parking on Lincoln Street. Administrator Weber was instructed to discuss the matter with Federal Screw Works.

Police Chief Meranuck recommended that there be no change in traffic regulation signs at the intersection of Grant and Lincoln Streets. No action was taken at this time.

Motion by Wood, supported by Johnson, to approve the Planning Commission's request to have Fred Barkely, Planning Consultant, review the site plans of W. C. Weber for the Old Junior High Property. Roll call: Yeas all. Motion carried.

Motion by Rowe, supported by Johnson, to grant the Planning Commission request to hold a public hearing on the proposed amendments to the Zoning Ordinance to be held at the Planning Commission meeting on May 13, 1976. Roll call: Yeas all. Motion carried.

Motion by Johnson, supported by Wood, to instruct the Chelsea Planning Commission to send written recommendation on the rezoning of the Papo property south of the Medical Center to the Sylvan Township Planning Commission and the Washtenaw County Planning Commission. Roll call: Yeas all. Motion carried.

NORTH ELEMENTARY SCHOOL NOTES

3rd GRADE—

Teacher: Miss Sanders
In Miss Sanders' class we have been making our own class newspaper. We chose two editors, Betsy Galbraith and Steve Fleishman, and the rest of us became reporters. Some of the sections in our newspaper include interviews with Mr. Benedict about the popcorn sale, sports, weather, recipes, problems, and more. Miss Sanders will type the paper this week-end and we will all get a copy of it next week.

Yesterday we spent some time sharing hobbies. We found that we have several rock collections, a stamp collector, a bone china collector among others. It was interesting and fun to look at everyone's collections.

We've celebrated two birthdays since last time, Corine Brown and Will Fetters have both turned nine and had birthday parties in the classroom.

Teacher: Mrs. Lauver

In Mrs. Lauver's class, Jamie Cameron, and Steve Kopolka celebrated their birthdays this month. Congratulations go out to Carla Sears for two reasons. She was one of the third grade winners for the Young Authors Conference and she was also, star sales person of North's third grade in selling popcorn. Carla sold over \$30 worth. Congratulations Carla.

The class has been learning how to give speeches. Their first attempts were tape recorded. Some of the children had never heard their voices recorded before.

Teacher: Mr. Smith

Mr. Smith's class had a pleasant surprise on Monday of this week. We found three baby gerbils in our gerbil cage. The new pups are about two weeks old because they have fur all over, but their eyes aren't open yet. They hid themselves so well that no one knew they were born. We've had fun observing the habits of the whole family and found some books in the library so we could do some research on their behavior.

Our class did very well with our popcorn sale. David Gipsen sold 41 boxes for the highest sale of the class. Others who sold over 20 boxes were Sandy Young, Lavonne Kruse, Jack Schwerin, Shiela Briggs, and Mike Gilligan. As a whole, our class did very well and earned a lot of money for our school to buy supplies. I'm very proud of the job they did.

One of the girls in our class was a winner for the Young Authors' Conference. Jeannette Rouse was one of two third grade winners. Her story was called "The Dog and the Frog and the Big City." Jeannette had Blake Alder help her illustrate the story and they made a nice book which she took with her when she attended the Young Authors' Conference on Saturday, at Bates Elementary school in Dexter.

ART—

Everyone plan to set aside Tuesday evening, May 13, from 6:30 to 8 for an evening of art enjoyment. Artwork by North and South school students, grades K-4, will be on display at the South school building. There will be a wide variety of projects from paintings to clay sculpture to portrait drawing. We hope to see you there.

4th GRADE—

Reporter: Kathy Haydock

Our class was talking about our future community of Chelsea and these are some things we would like to have: movies, good restaurant, frozen food lockers, recreation hall, drinking fountains, wider streets, more playgrounds, and an ice rink.

People who have birthdays this month are Wayne Smith and Mark Smith.

We planted flower seeds and most of them here came up. They are doing very well.

We are studying about South America in social studies.

In gym class people won the 50-yard dash. They are: Mike Brown and Kim Boyd. In the 60-yard dash these people won, Joy Albrecht and Brent Martin.

Kathy Haydock won the Young Authors' Conference for her poem. The name is "My Dog."

Alumni Day St. Louis School Is Observed at

The boys of St. Louis school welcomed back 50 former school chums and their parents, Sunday afternoon, April 27, at the school's annual alumni day.

This day, set aside each spring for a reunion of the old and new boys of St. Louis, is a day to exchange stories, see new changes in the school, and those in the boys as well.

One week prior to the celebration, the boys anxiously prepared to greet their old friends. Mrs. Robbins, housemother to the boys, reported that Friday classes were canceled for some of the boys in order that preparations for Sunday's celebration could begin. The boys spent the day polishing windows, picking up the grounds, and putting things in order in the new dorm.

At 2:30 p.m. Sunday all was ready, and the 60 boys of St. Louis school awaited the arrival of their alumni friends.

Festivities began with greetings from the fathers and brothers, followed by a floor hockey game in the gymnasium. Brother Natal led one team of boys; the other headed by Father Germano.

Following the play, the alumni toured the new wing. Photos were taken capturing their delight at the new facility.

A 4:15 mass said by Father Germano preceded dinner.

The dining room had been decorated for the occasion by Father Louis' streamers, balloons, and memorials filled the room for the 5 p.m. pot-luck dinner.

Father Umberto introduced the alumni to those boys who were not acquainted with the former students.

Girls from Ann Arbor, Chelsea, and Dexter joined the boys later in the evening for dancing in the gymnasium. Refreshments were served at 8 p.m.

Mrs. Robbins reported that many of the boys who return have made remarkable progress since their days at St. Louis. Many of them drive, and some have purchased their own cars. They hold jobs, some are continuing their education, and a few are married and have produced healthy families.

She added that they seem to have adjusted well socially to the world outside of St. Louis.

The oldest boy from the school is now 28 years old.

Area Resident Named to State UW Committee

Sharon D. Hodgson has been appointed to the Budget Committee of the United Way of Michigan.

Donald J. Pizzimenti, of Detroit, committee chairman, said that Mrs. Hodgson would be assigned to panels at UWM's annual budget conference to be held April 29-30 at Kellogg Center, Michigan State University.

Each panel reviewed budget presentations of two or more UWM member agencies and then made recommendations for the funding of the agencies during 1976.

UWM has 23 health and social service agencies as members. It helps plan programs and provides budgeting services and financial support for them.

Funds for UWM come from 140 local United Way campaigns conducted throughout Michigan. The Chelsea United Way is providing \$4,690 for UWM's member services during 1975.

Mrs. Hodgson lives at 16030 Cavanaugh Lake Rd. She is the Budget Committee chairman of the Chelsea United Way.

On May 29, 1780, a Loyalist group near Winstonsboro, S. C., was defeated by Patriot irregulars, marking the beginning of effective Patriot resurgence in the Carolinas.



OLD ACQUAINTANCES MAYBE FORGOTTEN are some of the young faces found in this photo, believed to be of the fifth grade class of 1926 or 1927. In front, from left, are Dorwin Bearbower, Glenwood Novess, Ruth Faist, Paul Ryan, Donald Osterle, Paul Rogers, Matthew McGaffigan, Tom Walworth, and Ethel Benison. Second row, from left, are Paul Nicolai, Doris Boone, Dora Scripser, Emily Petrolit, Gertrude Jensen, Andros Gulde, Willis Bullard, Doris Bearbower, Jennie Wagner, and Russell Berry. In back, from left, are Mary Combs, Dorothy Swarthout, Christina Schueller, Blanche Barry, Annie Gelsman, teacher Mrs. Gates, Roger Hinderer, Jim Panarites, and Francis Hoff. The picture was loaned to The Standard by Mrs. Harold Lantis of Stockbridge from a collection of old photos belonging to her late father, James McMannis, who operated a photography studio in Chelsea for many years.

Sixth Graders Enjoy Week of Outdoor Camp

The 6th grade class of Dwight E. Beach Middle school has recently returned from a week of outdoor education at Mill Lake Camp on Bush Rd. The class was divided in half, each half spending two and one-half days and two nights at camp learning about various aspects of the environment from teachers and parents assistants. For the duration of camp the students were divided into small groups and named after Indian tribes that were once in this area.

Included in the program was a three-mile hike to and from a bog and a brief history of that area; and a visit to a very old cemetery to discover more local history. Students learned about texture in nature by taking rubbings from trees, leaves and stones, and how to use compasses by following a pre-marked course. Games from other lands and games using mathematical knowledge were among other activities enjoyed by the 6th graders.

Recreational activities were also planned for the evenings. The first night the "tribes" were involved in a game of "capture the flag" until dark, when they were served punch and home-made cookies as an evening snack. The second night consisted of skits by each tribe and group singing, accompanied by guitar and banjo.

This is the third year Chelsea has been involved in the 6th grade outdoor education program, the first year being the 1970-71 school year. Camp and staff scheduling problems have prevented participation two years prior to this year.

The day was divided into two parts. In the morning the students discussed their stories with the other young authors. Some of the titles from South school were: "The Haunted House," Ann Stock; "The Magic Carpet Ride," Amy Wolter; "Kei, the Wise Tiger," Ted Merkel; "The Mysterious Castle," Susan Riemenschneider; "Mary's Surprise," Brenda Barber; "The Balloon," Jeff Koepele.

During the afternoon each student attended two of five work shops offered. In these workshops the students experimented with Mime puppet making illustrating and writing lyrics.

Highlight of the day was the presentation put on by Gussie Dickie an assistant principal with the Detroit Public Schools. Several of the South school students received Mrs. Dickie's autograph, climaxing their day.

Telephone Your Club News To 475-1371.

New Income Tax Withholding Tables Distributed

Detroit—The Internal Revenue Service today announced that new withholding tables are now being printed, and are scheduled to be distributed to all employers during this week. The new tables, effective for wages paid after April 30, reflect the reduced amount of income tax to be withheld from employee's wages as a result of the Tax Reduction Act of 1975, which was enacted March 29.

Because of the short time available to put the new withholding tables into effect, the IRS said that employers who make a good faith effort to accomplish the changes as soon as practicable will be deemed to be in compliance.

Soil Conservation Service in 40th Year

The Soil Conservation Service celebrates its 40th birthday on April 27, according to Bill Fishback, chairman of the Washtenaw county Soil Conservation Service, an agency of the USDA, provides technical assistance to landowners through Michigan's 85 Soil Conservation Districts.

In reviewing the history of government agencies, it becomes apparent that they are created out of a need, an emergency, or a crisis situation. The Soil Conservation Service is no exception.

The agency was created on April 27, 1935, by Congress as a permanent agency for soil erosion control. It was established under Public Act 46 of the 74th Con-

Young Authors Attend Dexter Conference

Six students from South school attended the Young Authors Conference in Dexter on April 19. These boys and girls were chosen by their classmates. All stories were read and then judged by the students in their own grade level.

Attending from 2nd grade were Amy Wolter and Ann Stock; 3rd grade, Ted Merkel and Susan Riemenschneider; 4th grade, Brenda Barber and Jeff Koepele. Two students from each grade level 2nd through 5th were allowed to attend. More than 100 students from surrounding school districts attended the conference.

The day was divided into two parts. In the morning the students discussed their stories with the other young authors. Some of the titles from South school were: "The Haunted House," Ann Stock; "The Magic Carpet Ride," Amy Wolter; "Kei, the Wise Tiger," Ted Merkel; "The Mysterious Castle," Susan Riemenschneider; "Mary's Surprise," Brenda Barber; "The Balloon," Jeff Koepele.

During the afternoon each student attended two of five work shops offered. In these workshops the students experimented with Mime puppet making illustrating and writing lyrics.

Highlight of the day was the presentation put on by Gussie Dickie an assistant principal with the Detroit Public Schools. Several of the South school students received Mrs. Dickie's autograph, climaxing their day.

Telephone Your Club News To 475-1371.

MCRC Reviews New Park Developments

mill creek research council review New oppositional developments in the battle against the proposed Huron-Clinton Metro Park in Lima and Freedom townships were discussed at the Mill Creek Research Council monthly meeting held last week.

Among these are Michigan legislative and U.S. Department of Interior activities, recent Washtenaw county Planning Commission concerns over park impact and water quality, SEMCOG's official withdrawal and support for the park and current Macomb county legal proceedings against the Huron-Clinton Metropolitan Park Authority.

These developments will be presented on May 7 at the Ways and Means committee meeting of the Washtenaw county Board of Commissioners for consideration in the

possible decision for future withdrawal of support for the proposed park.

The MCRC board also voted to send a financial contribution to the Raye township (Macomb county) Citizens for a Realistic Priority 26r use in their court battle against the HCMA North Branch proposed metro park.

This group has recently succeeded in getting a court injunction stopping the Metro Park Authority's buying action until further study has been done on the constitutionality of HCMA, deprivation of human rights, decreasing land values and the Authority's representational structure.

Mill Creek Research Council's next board meeting will be May 21. Members may be contacted for further information concerning the proposed metro park. They are David Bacon, Robert Wirtz, William Chandler, Margaret Sias, Donald Plumb, Walter Fuslier, Lynda Koch, Arthur Kuhl, Gerald Meyers, Sylvester Weber, David Wolfgang and Arlys Wiseman.

Hearing Slated On Bill To Curb State Taxation

Residents of Michigan, starting today, will have a bigger slice of their earnings taken in state taxes as the state's income tax jumps from 3.9 percent to 4.6 percent.

At least some of their elected representatives in Lansing are not happy about the continuing climb in state taxes and the spending that has necessitated it. They are pushing for consideration of a ballot proposal to put a ceiling on how much the legislature can tax and spend.

Resolutions introduced in the Senate by Senator John Welborn (R-Kalamazoo) and Senator John T. Bowman (D-Roseville) and in the House by Representative Thomas G. Sharpe (R-Howell) will do just that—place a limit on how much in total state taxes may be levied by the legislature and thereby limit how much money they can spend.

State Representative Lou Cramton (R-Midland) has arranged for a jointly sponsored public hearing on taxation limitation in general and the Bowman-Sharpe sponsored resolutions in particular to be held in the House Chambers in the Capitol in Lansing, Time: Monday, May 5, at 2 p.m.

Cramton expects an overflow crowd Monday "How the world got out I'm not sure but a lot of people have said they intend to be there to sound off," Cramton said.

Individuals or organizations who wish to testify at the hearing would be well advised to notify the office of Senator Bowman (State Senate, Lansing 48902, phone 517-373-8360).

SCHOOL LUNCH MENU

Week of May 5-9

Monday—Goulash and cheese, buttered green beans, bread and butter, applesauce, cookies and milk.

Tuesday—Varsity burgers and buns, cheese slices, tatar tots, peach dessert and milk.

Wednesday—Creamed turkey over mashed potatoes, buttered peas, biscuits and butter, chocolate pudding and milk.

Thursday—Submarines with sauce, cole slaw, potato chips, chilled pears and milk.

Friday—Baked lasagne, buttered peas, bread and butter, chocolate eclairs and milk.



HEIFERS REPAY HANDSOMELY— Grow 'Em Right!

At Wayne Research Farm twin 3-day-old heifers went on test.

One was fed Wayne Calflup medicated non-cereal milk replacer followed by Wayne Calf Krunch. The other: whole milk, hay, grain, soybean meal.

Wayne-fed heifer was ready for breeding earlier, calved earlier, produced milk 3 months earlier. And 2½ years later, showed a profit difference over twin sister of \$164.25!

Better stop in.

McGALLA FEED SERVICE

Phone 475-8153
12875 Old US-12, Chelsea

WAYNE
CALFLUP &
CALF KRUNCH

From Allied Mills:
The Innovators

DUNBAR'S DEXTER LOCKER

PAUL DUNBAR, OWNER

8083 MAIN ST., DEXTER

PHONE 426-8466

BUY NOW WHILE PRICES ARE LOW!

CLIP THIS COUPON

BEEF

SIDES HINDS FRONTS
85¢ lb. 95¢ lb. 73¢ lb.

(COMPLETE - Includes Cutting, Wrapping, Sharp Freezing)

SAVE WITH THIS COUPON
1¢ PER LB. OFF ON ABOVE ORDERS

FREEZER SPACE AVAILABLE
\$2.50 per month

We Also Sell in Small Quantities

Discount to Civic Groups - We Accept Federal Food Stamps

CUSTOM SLAUGHTERING & PROCESSING

PITTSBURGH SPRING INTERIOR PAINT SALE

MAY 1 thru May 7

INTERIOR LATEX gal. \$5.99

ONE-COAT FLAT
WALLHIDE LATEX gal. \$7.99

LO-LUSTRE ENAMEL
SATINHIDE LATEX gal. \$10.99

Sale Price on White and Pastel Colors Only.

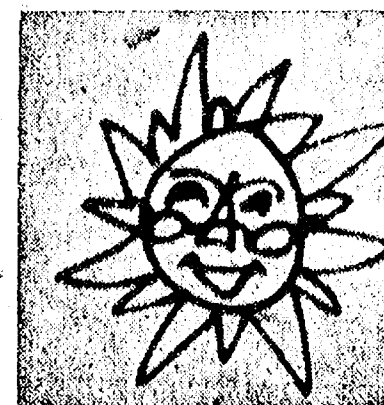
CHELSEA HARDWARE

119 S. Main St.

Phone 475-1121

GOOD FOOD AT A REASONABLE PRICE
SERVED IN A PLEASANT ATMOSPHERE

MANCHESTER'S COUNTRY KITCHEN



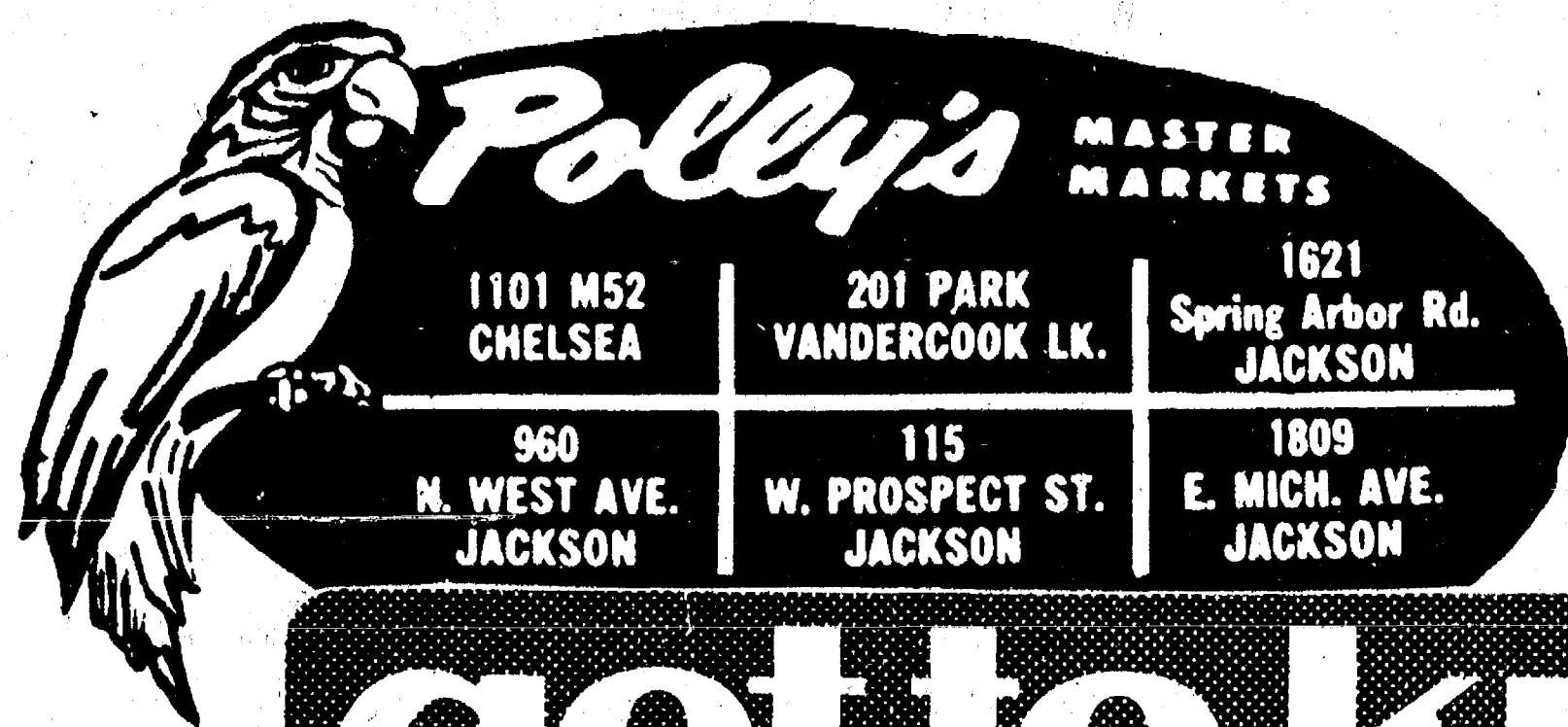
Open Monday thru Wednesday
6 a.m. to 3 p.m.

Thursday and Friday
6 a.m. to 7:30 p.m.

Saturday Sunday
6 a.m. to 4 p.m. 8 a.m. to 2 p.m.

233 E. MAIN ST., MANCHESTER

Home-Made Pies Our Specialty



get to know us...
WE CAN HELP YOU SAVE ON YOUR FOOD BILL!

OPEN . 8 A.M. TO 10 P.M.
DAILY.

OPEN 9 A.M. TO 6 P.M.
SUNDAY:

- ★ **QUALITY PRODUCE**
- ★ **QUALITY MEAT**
- ★ **COLD BEER & WINE**
- ★ **LOTTERY TICKETS**
- ★ **SIDES OF BEEF**
- ★ **FRUIT BASKETS**
- ★ **DRY CLEANING**
- ★ **PHOTO PROCESSING**
- ★ **VARIETY AT LOW PRICES**

Polly's MASTER MARKETS

1101 M52 CHELSEA	201 PARK VANDERCOOK LK.	1621 Spring Arbor Rd. JACKSON
960 N. WEST AVE. JACKSON	115 W. PROSPECT ST. JACKSON	1809 E. MICH. AVE. JACKSON

OPEN 8 A.M. 'TIL 10 P.M. DAILY
9 A.M. 'TIL 6 P.M. SUNDAY
ALL PRICES EFFECTIVE THRU SUNDAY
WE RESERVE THE RIGHT TO LIMIT QUANTITIES

OPEN 7 to 10 DAILY
AT WEST AVE. & SPRING ARBOR
BANK AT WEST AVE. 9 to 9



**RIGHT NOW,
YOUR BEST BUY IS OUR
Priced Right MEAT**

**WE'RE
"BARBECU-ING"
PRICES**

ON YOUR FAVORITE MEATS
FOR OUTDOOR GRILLING

FRESH
WHOLE
FRYERS

LB. **43¢**

POLLY'S PRIDE
DELMONICO
STEAKS

LB. **\$2.29**

LEAN TENDER THICK CUT
**PORK
CHOPS**

LB. **\$1.39**

SAVE 34' FARMER PEETS
**ALL BEEF
FRANKS**

1-LB.
PKG. **89¢**

POLLY'S PRIDE QUALITY
**STRIP
STEAKS**

LB. **\$2.29**

FRESH GROUND!
All Beef

**GROUND
CHUCK**

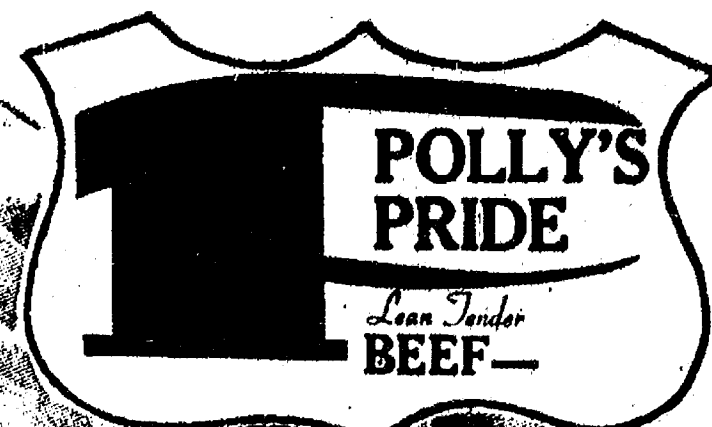
LB. **97¢**

SAVE 32' LB.
Polly's Pride Quality
**CHUCK
STEAK**

LB. **67¢**

SAVE 40'
Swift Premium
**SLICED
BACON**

1-LB.
PKG. **\$1.29**



SAVE 32' LB.

Polly's Pride Quality Beef

**CHUCK
POT ROAST**

LB. **57¢**

SAVE 42' POLLY'S PRIDE QUALITY

**ARM-CUT
CHUCK ROAST** ... LB.

\$1.07

SAVE 32' LB. POLLY'S PRIDE QUALITY

**BONELESS
CHUCK ROAST** ... LB.

\$1.17

SAVE 32' LB. POLLY'S PRIDE QUALITY

**ENGLISH
CHUCK ROAST** ... LB.

97¢

SAVE 32' LB. POLLY'S PRIDE QUALITY

**STEW
MEAT** ... LB.

\$1.17

SAVE 20' LB. POLLY'S PRIDE BEEF

**SHORT
RIBS** ... LB.

49¢

SAVE 30' SWIFT

HOT DOGS ... Regular or All Beef 12-OZ.

59¢

SAVE \$1.00 FARMLAND

CANNED HAM ... 3-LB.

\$3.99

SAVE 20' LB. FRESH

PORK LIVER ... LB.

39¢

SAVE 30' LB. BULK

LAYER BACON ... LB.

\$1.19

SAVE 20' ECKRICH

BOLOGNA ... 12-OZ.

99¢

SAVE 20' ECKRICH

SMORGAS PAK ... 1-LB.

\$1.39

SAVE 20' FARMER PEETS A/C

BRAUNSWEIGER ... LB.

59¢

SAVE 20' FROM OUR DELI

POLISH SAUSAGE ... LB.

\$1.29

SAVE 20' FROM OUR DELI ... COOKED

CORNER BEEF ... LB.

\$1.04

SAVE \$1.00 W/IN-STORE COUPON
FRESH GROUND ALL MEAT

HAMBURG ... 10-LBS.

\$5.90

SAVE \$5.00 W/IN-STORE COUPON
POLLY'S PRIDE QUALITY BEEF

BEEF HINDS ... 5-LBS. or more

\$5.00 OFF

SAVE 50' WITH IN/STORE COUPON
ON ANY

CANNED HAM ... 10-LBS. or more

50¢ OFF

SAVE 50' WITH IN/STORE COUPON
ON ANY

TURKEY ... 10-LBS. or more

50¢ OFF

**HEALTH
and
BEAUTY
AIDS**

PEPSODENT TOOTHBRUSH

Soft, med., hard 4 for \$1 79c Value

**UNGUENTINE
for Sunburn**

5 oz. Aero **\$1.39** \$2.39 Value

BAYER CHILD'S ASPIRIN

36's **29¢** 49c Value

**Clairol Herbal Essence
Shampoo**

Regular, Oily, Delicate
12 oz. **\$1.29** \$2.40 Value

JOHNSON'S Cotton Swabs

200's **79¢** \$1.31 Value

**FOAMY
SHAVE CREAM**



Regular, Menthol,
Surf Spray
Lemon-Lime
11 oz. - \$1.39 Value

79¢

**GET A BONUS FROM
Crest**



Regular or Mint **97¢** \$1.38 Value

PRELL LIQUID

11 oz. - \$1.66 Value
25c Off Label

99¢

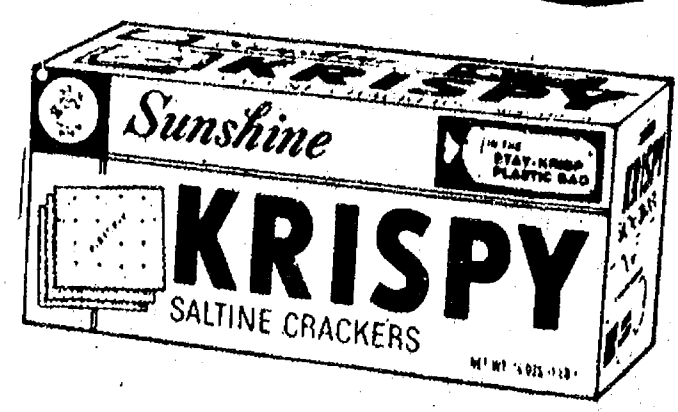


PRELL CONCENTRATE

5 oz. Tube **\$1.19** \$1.91 Value

YOU CAN'T HELP SAVING

AT THESE LOW PRICES



Polly's MASTER MARKETS

1101 M52 CHELSEA	201 PARK VANDERCOOK LK.	1621 Spring Arbor Rd. JACKSON
960 N. WEST AVE. JACKSON	115 W. PROSPECT ST. JACKSON	1809 E. MICH. AVE. JACKSON

16-OZ.
\$1.29
W COUPON

16-OZ.
39¢
W COUPON

1/2-GAL.
59¢
W COUPON

1/2-GAL.
89¢
W COUPON

VALUABLE COUPON
SAVE 56¢
W/\$5.00 PURCHASE
NO RETURN
8-PK COKE
16-OZ. \$1.29
LIMIT 1 PER COUPON PER FAMILY
GOOD THRU SUN. 5-4-75

VALUABLE COUPON
SAVE 18¢
W/\$5.00 PURCHASE
SUNSHINE
KRISPY CRACKER
1-LB. 39¢
LIMIT 1 PER COUPON PER FAMILY
GOOD THRU SUN. 5-4-75

VALUABLE COUPON
SAVE 30¢
W/\$5.00 PURCHASE
POLLY'S HOMOGENIZED
MILK
1/2-GAL. 59¢
LIMIT 2 PER COUPON PER FAMILY
GOOD THRU SUN. 5-4-75

VALUABLE COUPON
SAVE 30¢
W/\$5.00 PURCHASE
BORDEN'S
ELSIE
ICE CREAM
1/2-GAL. 89¢
LIMIT 1 PER COUPON PER FAMILY
GOOD THRU SUN. 5-4-75



SAVE 20¢ SWIFTS
PREM 12-OZ. **69¢**
SAVE 20¢ SWIFTS
BEEF STEW 24-OZ. **69¢**
SAVE 20¢ SWIFTS
CHILI WITHOUT BEANS 24-OZ. **69¢**
SAVE 18¢ SWIFTS
CHILI W/BEANS 15 1/2-OZ. **49¢**
SAVE 50¢ SWIFTS
CHICKEN W/DUMPLINGS 50-OZ. **99¢**



SAVE 30¢ W. IN-STORE COUPON
Pillsbury FLOUR
10-LB. **\$1.39**

SAVE 30¢ W. IN-STORE COUPON
Open Pit BARBECUE SAUCE
28-OZ. **69¢**

SAVE 16¢ W. IN-STORE COUPON
Easy Off WINDOW CLEANER
19-OZ. **49¢**

SAVE 40¢ W. IN-STORE COUPON
Instant SANKA COFFEE
8-OZ. **\$1.99**

SAVE 25¢
Liquid Vanish BOWL CLEANER
16-OZ. **29¢**

EVERYDAY LOW, LOW
Before Inflation Prices
CHECK & COMPARE... YOU'LL SAVE MORE AT POLLY'S

SAVE 36¢
CARNATION SLENDER 4-PK. **69¢**
SAVE 4¢ CONTADINA
TOMATO SAUCE 8-OZ. **15¢**
SAVE 10¢ SCOT LAD
VEGETABLE SHORTENING 3-LB. **\$1.29**
SAVE 20¢ NIGHT or DAYTIME
KIMBIES X-TRA ABSORBENT 12-CT. **99¢**
SAVE 12¢
SHASTA CAN POP 6 12-OZ. CANS **89¢**
SAVE 9¢ MEADOWMOOR
IMITATION SOUR CREAM 16-OZ. **39¢**
SAVE 21¢ SEALTEST
LIGHT N' LIVELY YOGURT 3 8-OZ. **89¢**
SAVE 14¢ BORDEN
ICE CREAM BAR STIX 6-PK. **53¢**
SAVE 12¢
WINDEX REFILL 20-OZ. **37¢**
EVERYDAY LOW!
STOKELY APPLESAUCE 3 16-OZ. CANS **\$1**



SAVE 20¢ REALEMON
LEMON JUICE
32-OZ. **59¢**

SAVE 14¢ 20¢ OFF
DOVE for DISHES
32-OZ. **79¢**

SAVE 3¢
MORTON SALT
26-OZ. **13¢**

SAVE 9¢ 7¢ OFF
ZEST
3-PK REG. **59¢**

SAVE 20¢ KRAFT
AMERICAN SINGLES
12-OZ. **79¢**

SAVE UP TO \$12.92

WITH IN-STORE COUPONS,
PLUS COUPONS IN THIS AD

BUY 1 SAVE 30¢	OPEN PIT BARBECUE SAUCE	28-OZ.	69¢
BUY 1 SAVE 27¢	HUNTS SNACK PACK	4-PK.	59¢
BUY 1 SAVE 30¢	PILLSBURY FLOUR	10-LB.	\$1.39
BUY 1 SAVE 30¢	PAMPERS TODDLER DIAPERS	12-CT.	\$1.09
BUY 1 SAVE 50¢	ON ANY 5-LB. or more CANNED HAM		50¢ OFF
BUY 1 SAVE 50¢	ON ANY 10-LB. or more TURKEY		50¢ OFF
BUY 1 SAVE \$5.00	POLLY'S PRIDE BEEF HIND		\$5.00 OFF
BUY 1 SAVE \$1.00	FRESH GROUND 10-LBS. HAMBURG		\$5.90
BUY 1 SAVE 16¢	EASY-OFF WINDOW CLEANER	19-OZ.	49¢
BUY 1 SAVE 24¢	LIQUID VANISH BOWL CLEANER	16-OZ.	29¢
BUY 1 SAVE 76¢	MODESS SANITARY NAPKINS	40-CT.	\$1.59
BUY 1 SAVE 30¢	SANDERS JELLY DONUTS	6-PK.	99¢
BUY 1 SAVE \$1.90	SAV-A-LOT THERAGRAN-M VITAMINS	100 CT.	\$3.97
BUY 1 SAVE 48¢	SAV-A-LOT CORICIDIN COLD TABLETS	60-CT.	\$1.39
BUY 1 SAVE 81¢	SAV-A-LOT GELUSIL LIQUID ANTACID	12-OZ.	99¢

FROZEN FOODS

SAVE 12¢ BANQUET
COOKIN' BAGS
4 5-OZ. PKGS. **\$1.00**

SAVE 30¢ BOOTH HEAT N' EAT
SHRIMP 7-OZ. **89¢**
SAVE 12¢ MORTON
HONEY BUNS 9-OZ. **49¢**
SAVE 20¢ NICKERSON
MACKEREL 1-LB. **59¢**
SAVE 20¢ QUEEN of SCOT
CAULIFLOWER 20-OZ. **69¢**
SAVE 6¢ SCOT LAD
ORANGE JUICE 16-OZ. **53¢**
SAVE 40¢ SCOT LAD "BITE SIZE"
S.S. POTATOES 4-LB. **\$1.19**
SAVE 50¢ HARRISS DELUXE
PEACH PIE 10" **\$1.29**

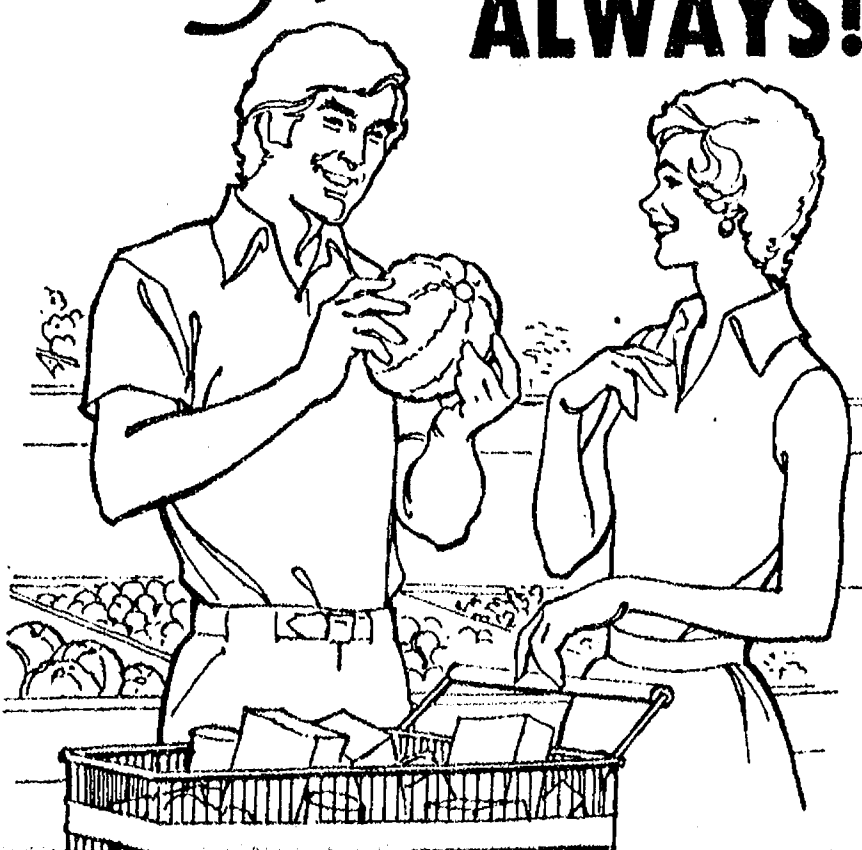
SAV-A-LOT DRUGS
POLLY'S ON SPRING ARBOR RD. POLLY'S ON N. WEST AVE.

We Welcome your comparison... our prices are the lowest in town.

WE PARTICIPATE IN ALL UNION & INSURANCE PROGRAMS

P.D.'s THYROID 1 GRAM 100's \$1.09	P.D.'s PHENOBARB 1/4 GRAM 100's 99¢	P.D.'s DIGITOXIN 1 MGM 100's \$1.09
		MARIONS PAVABID 100's \$10.99

YOU CAN —
Count on
Freshness
ALWAYS!



GARDEN FRESH HEAD
LETTUCE **29¢**

VINE RIPENED
TOMATOES LB. **39¢**

TENDER YELLOW
SWEET CORN 5 EARS **69¢**

GARDEN FRESH
GREEN BEANS LB. **33¢**

Our produce man is top banana when it comes to fruits and vegetables. He stocks the juiciest...crispiest produce. Look for weekly specials!

U.S. NO. 1 C.A.
McINTOSH APPLES
3-LB. BAG **59¢**

Thank You

FOR SHOPPING AT...



**WHERE WE ARE
HAPPY TO.....**

save **YOU MONEY!**